



# PARTNERS

Integrated  
Solutions

**Armstrong**<sup>®</sup>  
CEILING SOLUTIONS

# PREDICT ABLE Performance

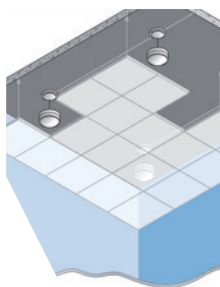
These partnerships provide pre-engineered, pre-fitted fixtures and components that integrate, work with, or complement Armstrong Ceiling Systems.

Our mission is to make it easier for architects, designers, and contractors, who are increasingly being asked to design and install integrated ceilings, to find, specify, and build compatible high-performance components for their ceiling layouts with confidence.

[armstrongceilings.com/partners](http://armstrongceilings.com/partners)



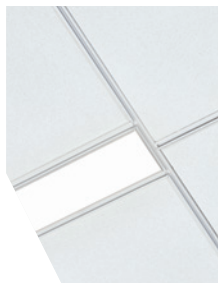
AIR  
DIFFUSERS



SOUND  
MASKING



CHILLED BEAMS



LIGHTING &  
FIXTURES



SPRINKLER  
CONNECTIONS

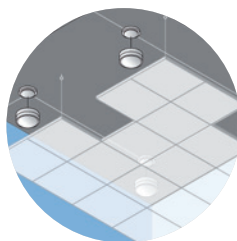


SHADES

TechZone® Ceiling System with  
integrated lighting, diffusers, and  
sprinkler connections. Fermilab Office







SOUND. THAT WORKS.™

Cover the ABCs of effective acoustics by ensuring your space has the ambient sound level needed for speech privacy, noise control and occupant comfort.

- Small, computer-tuned zones provide consistent, comfortable and effective sound masking
- Networked architecture maximizes control and easily scales for spaces of all sizes
- Designed for installation without ceiling cut-throughs

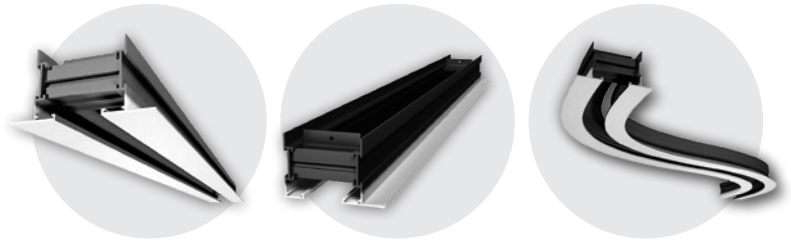
COMPLEMENT OVERVIEW:

All Armstrong® Ceiling Panels and Spaces

PARTNER RELATED  
PRODUCT LINE:

- LogiSon® Sound Masking





## DIFFUSERS AND CHILLED BEAMS

Industry leader in air distribution solutions, which perfectly complement the interior aesthetic, while ensuring optimal thermal comfort in occupied spaces.

- Customizable, quality products meet any architectural requirement
- Strict engineered approach and decades of experience result in tested and proven solutions
- Custom finishes allow for a seamless blend with architectural features
- Quick-build options

### INTEGRATION OVERVIEW:

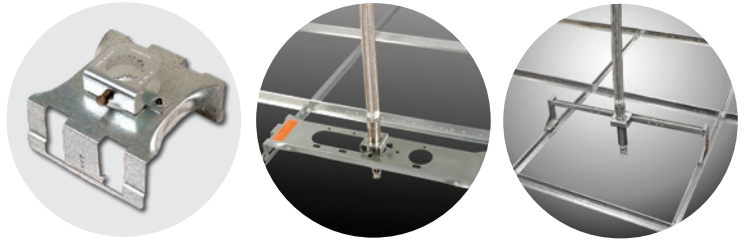
TechZone® Ceiling Systems and DesignFlex® Ceiling Systems

### PARTNER RELATED PRODUCT LINE:

- 4" & 6" Systems
- SHP Series



# FLEXHEAD®



## SPRINKLER CONNECTIONS

Rapid installation, simple relocation, feasible retrofitting and system versatility for all commercial suspended ceiling applications.

- Flexible systems meet fire protection standards
- Require less installation time vs. hard pipe armovers
- Reduce construction schedules to allow for rapid building occupancy

INTEGRATION OVERVIEW:  
TechZone® Ceiling Systems

PARTNER RELATED  
PRODUCT LINE:

- Flexible Fire Sprinkler Connections







## SHADES

Industry leader in shade solutions that delivers world-class daylight control systems that improve the performance of buildings and people, and enhance the design of a project from the exterior to the interior.

- Allows for quality control at the perimeter
- Reduces risk associated with field fabricated, labor intensive accommodation of air distribution, window pockets and ceiling elevation changes at the perimeter of a building
- Exposed perimeter pocket offering allows for shade concealment in an exposed structure application

### INTEGRATION OVERVIEW:

Axiom® Building Perimeter Shade Pockets



### PARTNER RELATED PRODUCT LINE:

- Sivoia® QS Roller  
Shades 100/150/300



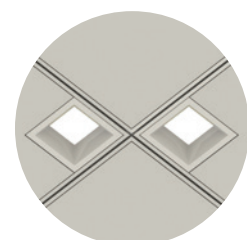
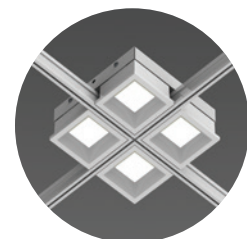
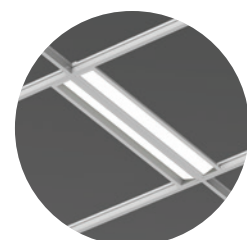


## ON-THE-GRID LINEAR & DOWNLIGHTING

Redefining the way luminaires interface with the ceiling grid through innovative on-the-grid mounting techniques.

- Easy on-the-grid installation and made-to-order ceiling tiles to help reduce installation costs
- Ultra-shallow form factor
- Flanges for supporting acoustical ceiling tiles
- Light guide optical system providing comfortable, low glare illumination

INTEGRATION OVERVIEW:  
15/16" & 9/16" Suspension Systems



PARTNER RELATED  
PRODUCT LINE:

- DUO™ T-BAR
- ACE™ T-BAR
- EDGE™ T-BAR
- QUAD™ T-BAR



# BACKLIGHT

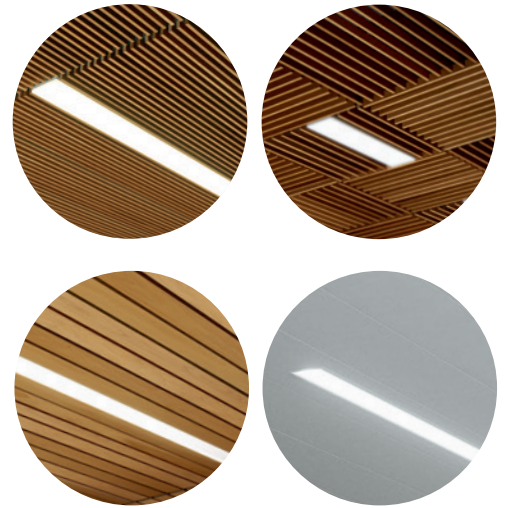
## LINEAR LIGHTING

Seamlessly integrate linear light fixtures using Integrated Light Connection Clips that suspend lights directly from the suspension system.

- Low-profile, pre-engineered light fixture offers a flush, sleek visual
- Length and width of lights are designed to coordinate with WoodWorks® panels

### INTEGRATION OVERVIEW:

WoodWorks® Grille, Grille Tegular, Linear Solid Wood, Linear Veneered panels, MetalWorks™ Linear – Synchro™, and MetalWorks™ Linear – Diverge™



### PARTNER RELATED PRODUCT LINE:

- CHIARO





# T-BAR LED™

by JLC • tech

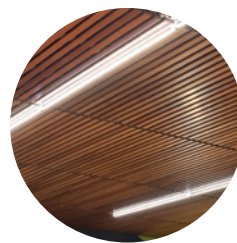
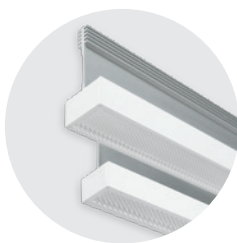
## MINIMALISTIC LINEAR LIGHTING

The only lighting product that is designed, approved, and patented to replace the cross members in a suspended grid ceiling system.

- No plenum occupancy
- Improve acoustics and optimize ceiling light reflectance
- Reduce and save with tool-free installation

### INTEGRATION OVERVIEW:

DynaMax® and DynaMax® Plus Structural Grid, 15/16" & 9/16" Suspension Systems, DesignFlex® Ceiling Systems, CastWorks™ Metaphors® Ceiling Panels, WoodWorks® Grille Tegular, Ultima®, Calla®, Optima®, and Lyra® Vector®



### PARTNER RELATED PRODUCT LINE:

- T-BAR LED™
- T-BAR FLEX™
- TeraLyte™





## LINEAR AND COVE LIGHTING

Architecturally sensitive, high-performance, energy-effective luminaires for general, ambient, task, and architectural applications in commercial and institutional spaces.

- Click – install-from-below zero-plenum LED luminaire system
- Cove Perfekt™ – foolproof keyed mounting, up to 90% less labor
- Geometric™ – uniquely shaped lighting elements for creative ceiling designs

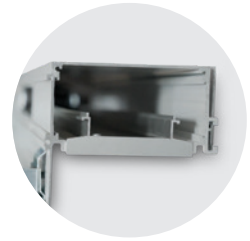
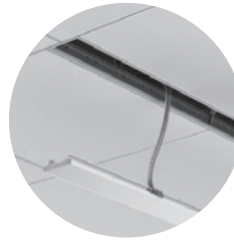
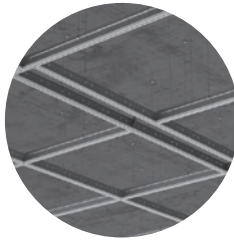
### INTEGRATION OVERVIEW:

Axiom® Direct Light Coves, Axiom® Indirect, Field, and Light Ledge Coves, ACT & Drywall Linear Lighting, TechZone® Ceiling Systems, DesignFlex® Ceiling Systems, MetalWorks™ Linear – Diverge™, and DynaMax® Structural Grid

### PARTNER RELATED PRODUCT LINE:

- Click
- Cove Perfekt™
- Geometric™
- Beam
- Stencil™
- Sculpt™
- Zen Square
- TRAYFIT™





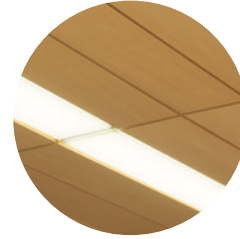
## LINEAR AND COVE LIGHTING

Create inspiring on-center continuous or non-continuous layouts that provide clean, modern aesthetics you'll love.

- LENO® LED light fixture installs from below to eliminate ceiling re-work
- Plug-and-play modular electrical wiring system
- Thin design for zero plenum applications with minimum clearance above ceiling

### INTEGRATION OVERVIEW:

Axiom® Direct Light Coves, ACT & Drywall Linear Lighting, TechZone® Ceiling Systems, WoodWorks® Grille, Grille Tegular, Linear Solid Wood, Linear Veneered panels, MetalWorks™ Linear – Synchro™, and MetalWorks™ Linear – Diverge™



### PARTNER RELATED PRODUCT LINE:

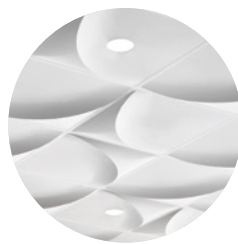
- LENO
- MOVE IT
- PANO Low-Profile
- BASO®







# USAI<sup>®</sup> Lighting



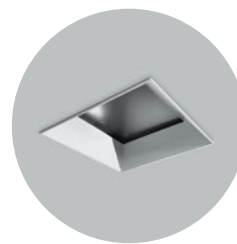
## DOWNLIGHTING

Lighting and architecture perfectly integrated into the ceiling to deliver your vision of symmetry.

- Seamlessly integrate recessed downlights
- Eliminate the need for independent support of fixtures or modification of the suspension system
- Full family of downlight, adjustable and wall wash options

### INTEGRATION OVERVIEW:

Intersection Downlighting, Trimless Centered Recessed Downlighting, TechZone<sup>®</sup> Ceiling Systems, WoodWorks<sup>®</sup> Grille, Grille Tegral, Linear Solid Wood, Linear Solid Wood Downlighting solutions, CastWorks<sup>™</sup> Metaphors Ceiling Panels, and MetalWorks<sup>™</sup> Torsion Spring, Torsion Spring Shapes, & Clip-on



### PARTNER RELATED PRODUCT LINE:

- BeveLED<sup>®</sup> Mini
- BeveLED<sup>®</sup> 2.2
- BeveLED<sup>®</sup> Connect<sup>™</sup>
- BeveLED<sup>®</sup> Micro<sup>™</sup>



## COVE LIGHTING

Cove lighting system for perfect color, perfect beam, and perfect alignment every time.

- Ideal for interior task and cove lighting for corporate, hospitality, and retail applications
- Integral power housing drops quickly into place with plug and play connections
- The Cove architectural key-way means perfect alignment and light distribution

### INTEGRATION OVERVIEW:

Axiom® Indirect, Field, and Light Ledge Covers

### PARTNER RELATED PRODUCT LINE:













- ZipWave 707





# PARTNER MATRIX

See how these partners fit into our integrated ceiling solutions, making specification and installation easy.

	Partner Family / Line(s)	Data Centers	Direct Light Coves	Indirect Light Coves	Downlighting	Linear Lighting	TechZone® Ceiling Systems	Natural Lighting	Building Perimeter Shade Pockets	Air Diffusers	Chilled Beams	Sprinkler Connections	Sound Masking	Shaped Fixtures (DesignFlex®)	Intersection Downlighting
	DUO; EDGE; ACE; QUAD				•	•									
	Cove Perfekt, Click, Geometric, Beam, Stencil, Sculpt, TRAYFIT™, ZEN Square	•	•	•		•	•							•	
	CHIARO					•									
	FlexHead TechZone; FlexHead ADO; FlexHead MPT; SuperFlex w/ SLT Technology						•					•			
	T-Bar LED® Cross Tee Light TERALyte™	•				•								•	
	Sivoia® QS Roller Shades 100/150/300								•						
	Model 10, Model 80, SDS (Linear Slot Diffuser), SPD, SCD, SMD (Square Diffusers), SHP (Shaped Diffusers)	•								•	•			•	
	LogiSon Sound Masking System												•		
	BeveLED® Connect™, BeveLED® Mini, BeveLED® 2.2, BeveLED® Micro™				•		•								•
	ZipTwo™, ZipWave™ 707	•		•											
	LENO®, PANO, BASO		•			•	•								
	PTDC	•													

# TAKE THE NEXT STEP

## 1 877 276-7876

Customer Service Representatives  
7:45 a.m. to 5:00 p.m. EST  
Monday through Friday

**TechLine** – Technical information, detail drawings, CAD design assistance, installation information, other technical services – 8:00 a.m. to 5:30 p.m. EST, Monday through Friday. FAX 1 800 572 8324 or email: [techline@armstrongceilings.com](mailto:techline@armstrongceilings.com)

## [armstrongceilings.com/commercial](http://armstrongceilings.com/commercial)

Latest product news

Standard and custom product information

Online catalog

CAD, Revit®, SketchUp® files

A Ceiling for Every Space® Visual Selection Tool

Product literature and samples – express service or regular delivery

Contacts – reps, where to buy, who will install



## [armstrongceilings.com/projectworks](http://armstrongceilings.com/projectworks)

The power of PROJECTWORKS® Design and Pre-Construction Service

Mix and match different sizes, shapes, colors, and materials to reinvent your standard, specialty, or custom ceiling.

Visit our pattern gallery online to see ideas for your next project. [armstrongceilings.com/patterngallery](http://armstrongceilings.com/patterngallery)

Contact your local representative to get a design started! Not sure who your local rep is?

Visit [armstrongceilings.com/findarep](http://armstrongceilings.com/findarep)

H.E. Williams is a registered trademark of H.E. Williams, Inc.  
FlexHead® is a trademark of Anvil International  
LogiSon® and SOUND. THAT WORKS® are registered trademarks of 777388 Ontario Limited.  
Lutron®, the Lutron logo, and Sivoia are registered trademarks of Lutron Electronics, Co., Inc., in the U.S. and/or other countries  
Price® is a registered trademark of Price Industries Limited  
Revit® is a trademark of Autodesk, Inc.  
SketchUp® is a registered trademark of Trimble, Inc.  
T-Bar LED®, T-Bar FLEX®, and TeraLyte™ are trademarks of JLC-Tech, LLC  
USAI® and BevelLED® are registered trademarks of USAI, LLC  
XAL®, LENO®, and BASO® are registered trademarks of XAL Inc.  
Backlight and CHIARO are trademarks of BACKLIGHT srl  
Axis Click™, Cove Perfekt™, Sculpt™, Stencil™, Geometric™, and TRAYFIT™ are trademarks of Axis Lighting, Inc.  
Vode® ZipTwo™, and ZipWave™ are trademarks of Vode Lighting LLC  
ARON® is a trademark of Aron Lighting  
All other trademarks used herein are the property of AWI Licensing LLC and/or its affiliates  
© 2023 AWI Licensing LLC • Printed in the United States of America

[armstrongceilings.com/partners](http://armstrongceilings.com/partners)

