



*Create a sense of well-being with*

- Cleaner air
- Disinfectable surfaces
- Brighter, quieter spaces
- Sustainable materials
- Design choices that inspire

# What's **NEW**

2021/1 – Design, Lighting,  
Details That Make a Difference



# *A healthy space is ... an inspiring space*

ARKTURA  
2020



MÓZ DESIGNS  
2020



TURF DESIGN  
2020



ACGI  
2019



Now part of our  
WoodWorks® Family

STEEL CEILINGS  
2018



Now part of our  
MetalWorks™ Family

PLASTERFORM  
2018



TECTUM  
2017



SIMPLEX  
2011



Now part of our  
MetalWorks Family

## **A GROWING PORTFOLIO: MORE MATERIALS, SHAPES FORMS & CAPABILITIES**

We're adding more capabilities so you have unlimited design options for your projects. From new materials, like Tectum® panels, Plasterform™ architectural castings, and Felt, to custom design capabilities across our portfolio for a one-of-a-kind, boutique project with the You Inspire™ Solutions Center and now, Arktura, Móz Designs, and Turf Design. And don't forget our ProjectWorks® Design & Pre-construction Service, turning your design vision and project RCP into one efficient, convenient work package. Now, more than ever, we can help you create healthy, inspiring spaces.



## Bringing the outdoors in at the Armstrong Living Lab

### Living Lab

At Armstrong, we live and breathe healthy spaces, indoors and out. This is our Living Lab, an active space where we explore ways our ceilings and walls can help people be at their best where they live, work, learn, heal, and play.

Clean, controlled air, disinfectable surfaces, quiet, bright surrounding, sustainable materials and inspiring design ... now that's design for healthy spaces.



Armstrong® mineral fiber ceilings are the capstone of a healthy space, bringing 24/7 Defend™ products that improve indoor air quality, acoustics, light reflectance, and sustainability together.

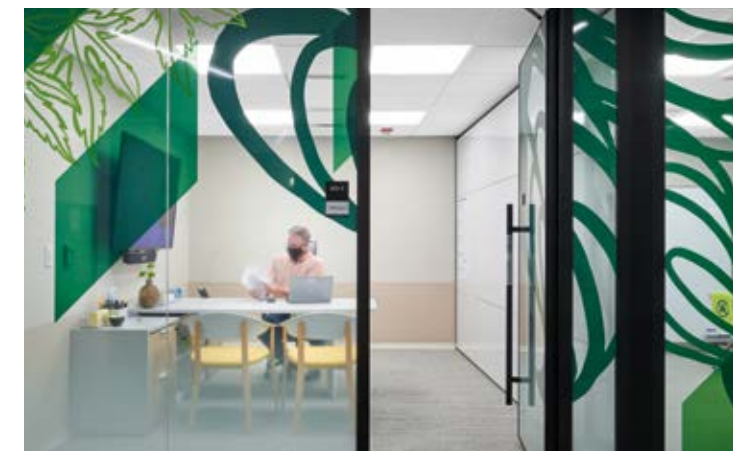
Above: AirAssure™ ceilings reduce air leakage through the ceiling plane. The VidaShield UV24™ air purification system significantly improves air ventilation and filtration systems. The ACOUSTIBuilt® Seamless Acoustical Ceiling System looks like drywall but performs like an acoustical ceiling system.



Biophilic design elements include natural light, warm wood tones, and deep, earthy colors evoking growth and well-being.

Tectum® and MetalWorks™ specialty ceilings, VidaShield UV24™ Air Purifier, and Prelude® 360° open grid.

Building metrics are displayed real-time including air quality, temperature, occupancy density, cleaning, and disinfecting alerts, and other biomechanical data assuring confidence for occupants.



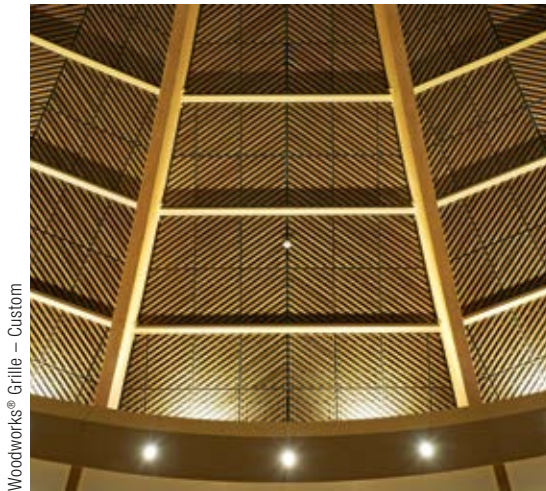
Above: Closed plan offices have Total Acoustics™ panels, offering the ideal combination of sound absorption and sound blocking to ensure speech privacy and quiet concentration areas.

Left: Triangular-shaped mineral fiber Calla® for DesignFlex® ceiling system, with our VidaShield UV24™ air purification system add interest to this unique collaborative space.

WELCOME TO THE LIVING LAB



*We come on the journey with you  
from inspiration through installation*



Woodworks® Grille – Custom



Metalworks™ Torsion Spring – Custom

## You Inspire™ Solutions Center

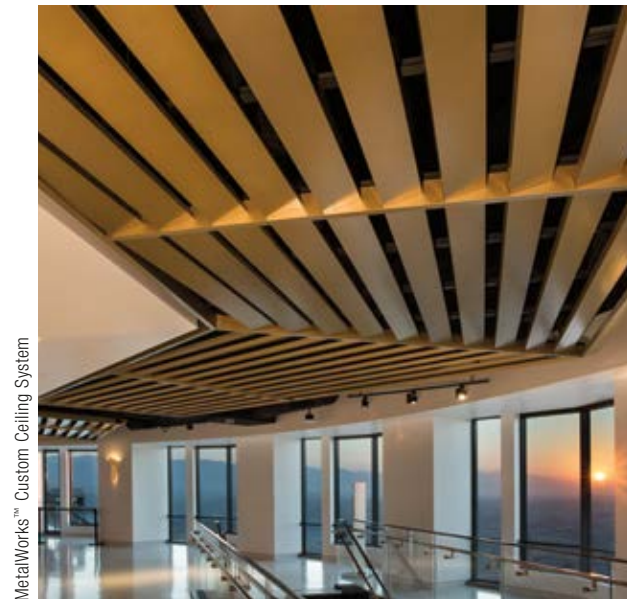
Bring your boutique one-of-a-kind ideas to life with the broadest portfolio of solutions and integrated systems.

Connect with our team of design specialists for free ceiling design support that includes:

- Collaborative design
- Detail and layout drawings
- Specifications
- Budgeting and planning
- Pre-construction assistance
- Installation recommendations

*“ It is amazing what can be done in a short amount of time. We had some really tight parameters to work with and I really can’t think of a smoother process given all the challenges we were facing with both schedule and cost. ”*

*- Audrey Wu  
Project Architect  
Gensler,  
Los Angeles*



MetalWorks™ Custom Ceiling System



Woodworks® Grille – Custom, and SoundScapes® Blades



MetalWorks™ Blades – Classics

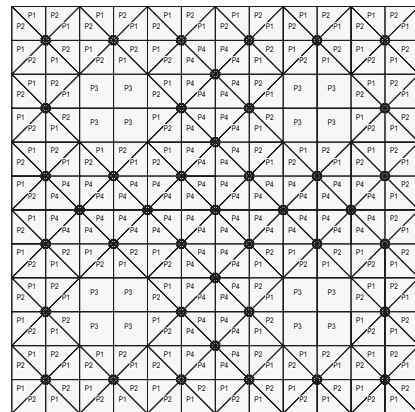
ONE-OF-A-KIND BOUTIQUE DESIGN SERVICE



*Streamline the entire process - from ceiling design to takeoffs and quoting through installation*

“ The support that the ProjectWorks staff was able to provide in close collaboration with our firm, the general contractor, and the design team proved to be invaluable in ensuring a timely and successful project delivery. ”

– Brendan O’Neil  
Construction Manager  
Acoustek, Inc.,  
North Dartmouth, MA



MetalWorks™ Torsion Spring Shapes

## PROJECTWORKS®

### Free Ceiling Design & Pre-Construction Services

- We turn your ceiling design vision and project RCP into one efficient, convenient work package
- Faster, easier estimating – in less than 48 hours
- DesignFlex® Ceilings and MetalWorks™ Torsion Spring Shapes and other specialty ceilings included in ProjectWorks®
- Submit your RCP in AutoCAD® or a Revit® file with included 2D RCP and we’ll create complete drawing details, a comprehensive quote, and a line item bill of materials in 48 hours or less

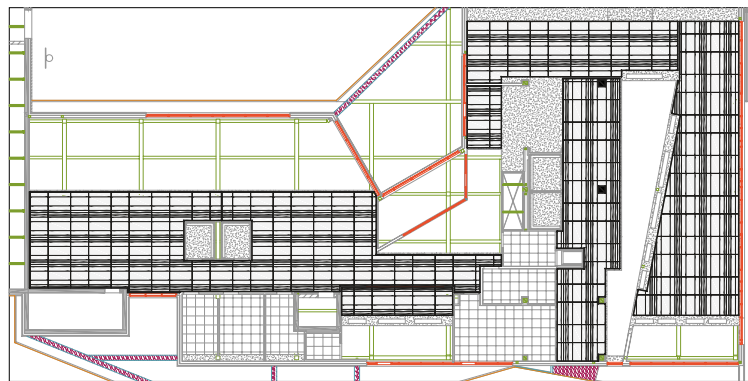
### Faster, More Efficient Design for Specifiers

#### Complete Design-to-Installation Package:

- Quick turnaround time for design
- Lighting and HVAC integration with Armstrong partners' components
- Automated drawing details for suspension systems and accessories
- Custom color application for panels, suspension systems, and perimeter trims
- Budget material pricing
- Integrates design through installation

### Faster, Easier Estimating & Takeoffs for Contractors

- Overall RCP dimensioned layout of Armstrong Ceiling Solutions in the project space
- Free pre-construction drawings and takeoffs for your complex and large-scale projects
- Color Plan Layout for ease of visualization when multiple colors are included
- Panel Schedule showing exactly which panels are installed in each location throughout the project space
- Suspension Schedule calls out each standard tee and main beam location
- Hub Schedule shows detailed grid intersections, clips, and perimeter installation
- Complete pre-construction takeoffs including quote with line item bill of materials
- Solve bidding challenges on projects using our most popular mineral fiber options



Calla® Tegular Squares and Rectangles

DESIGN & PRE-CONSTRUCTION SERVICE



*Design your own unique, custom visual using color and artwork*



**new** **TECTUM® Create!™ Direct-Attach Custom Wall panels**

Transform interior spaces with distinctive image depth and personality with texture-rich custom panels

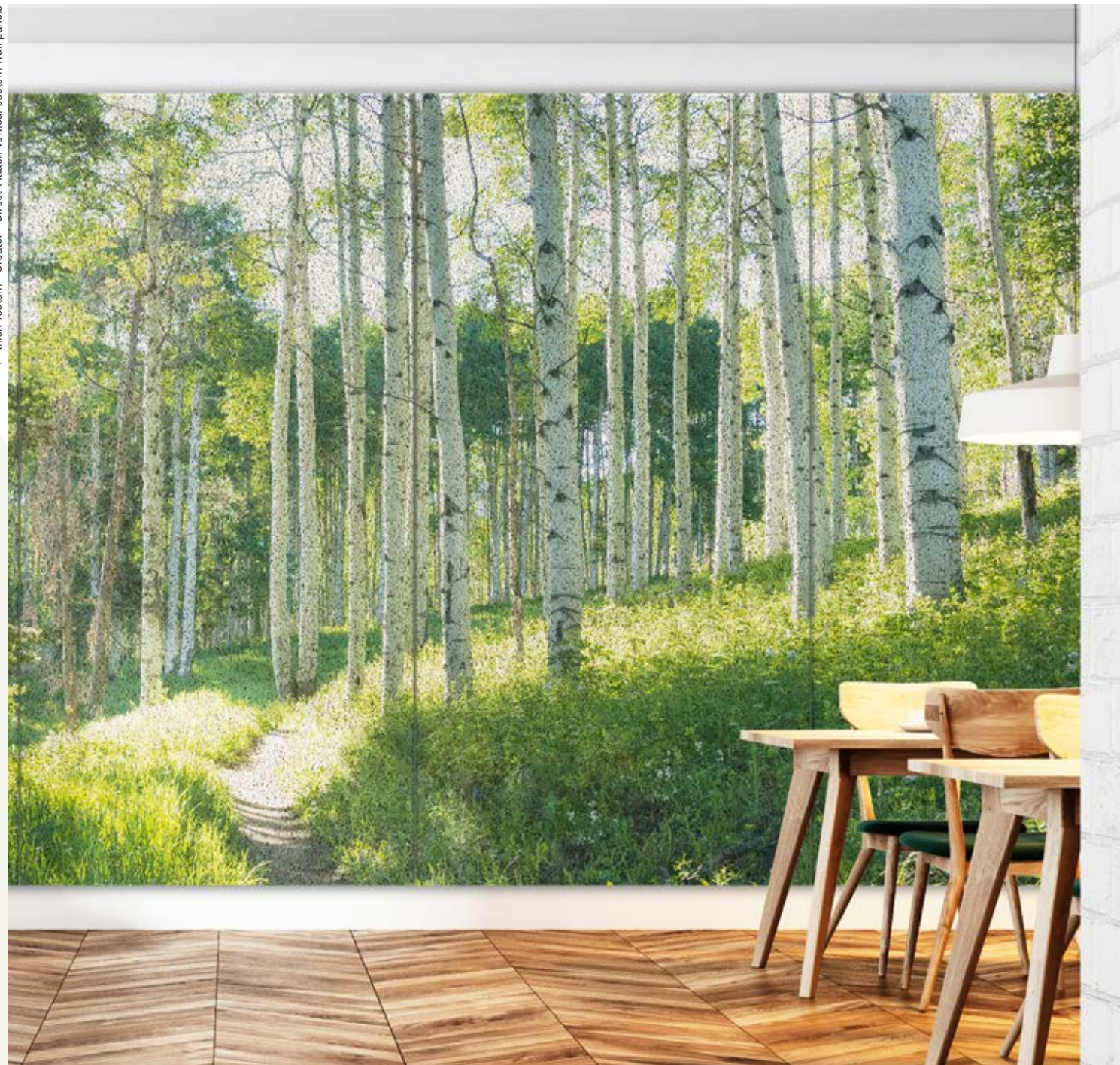
- 1" thick Tectum® Create!™ Direct-Attach custom wall panels can help create beautiful spaces tailored to any aesthetic
- Repeat panel patterns can span wall surfaces in both vertical and horizontal directions
- Excellent sound absorption – NRC up to 0.85 (mounting method dependent)
- Nominal panel sizes include 24" x 48" and 48" x 96" with long and short beveled edges (no additional custom sizes available)
- Panels can be directly attached to a wide variety of interior wall surfaces
- Tectum® panels are part of the Sustain® portfolio, meeting today's most stringent industry sustainability standards
- Design your one-of-a-kind acoustic artwork! To get started, contact [ASQuote@armstrongceilings.com](mailto:ASQuote@armstrongceilings.com)



See inset above



1" thick Tectum® Create!™ Direct-Attach vertical custom wall panels



DESIGN OPTIONS



*Industrial look for interior spaces in a variety of standard and custom sizes, colors, and patterns*

## METALWORKS™ Mesh

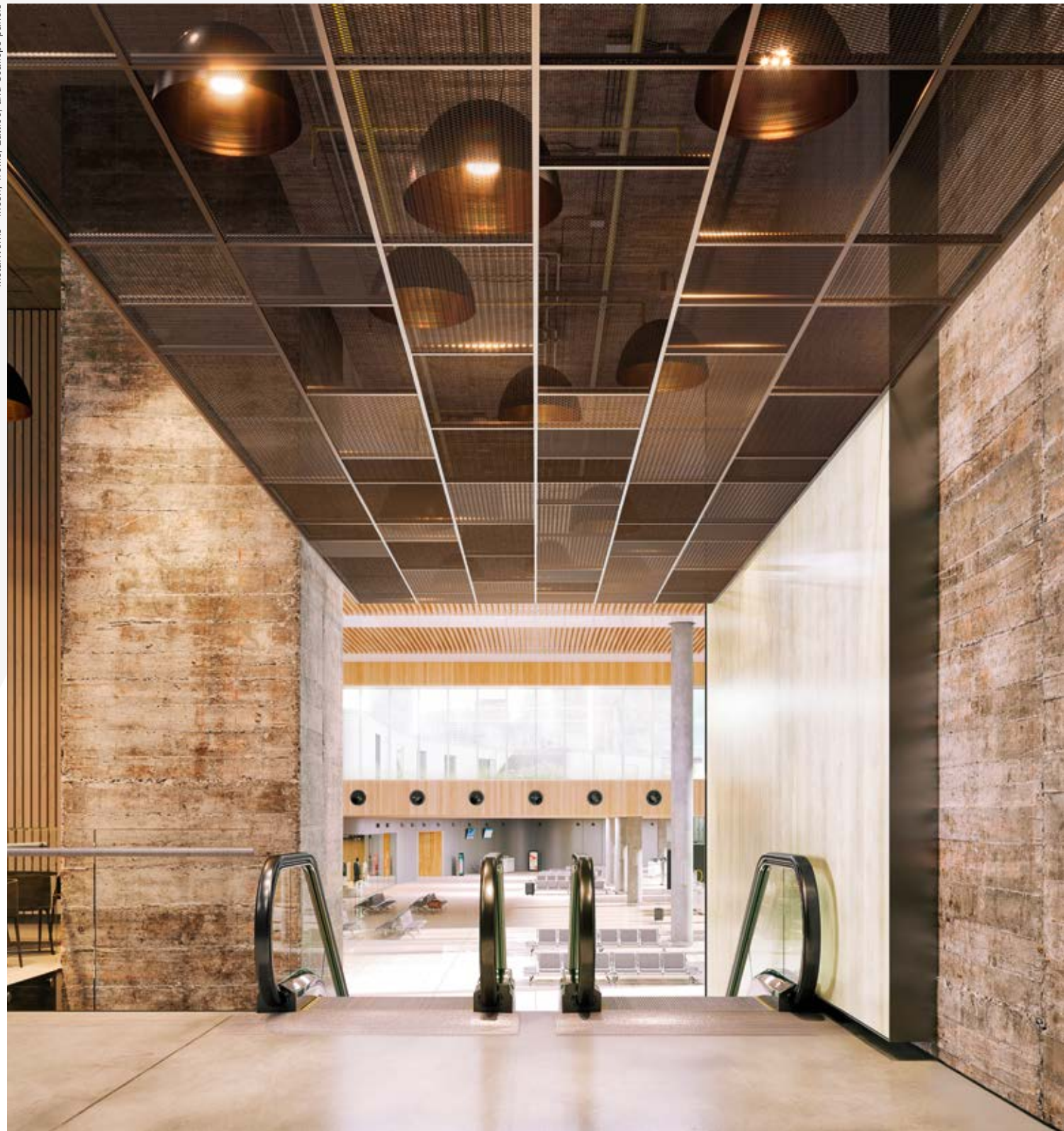
**new** Now Available in Larger Panel Sizes

- Large format 24" x 48", 24" x 72", and 24" x 96" lay-in ceiling panels are available as standard items in Lattice and Trellis Expanded Metal, Welded Wire 1 & 2 Cell, and Woven Wire 1 & 2 Cell patterns
- Variety of standard colors available; custom colors also available
- CleanAssure™ family of products – includes disinfectable panels, suspension systems, and trim
- Simple installation – panels lay in standard 15/16" suspension system with borders or finished edges
- Factory-engineered border around panel edges for safe, fast installation into grid system
- Black acoustical infill panels provide high sound absorption and help conceal elements in the plenum

Metalworks™ Mesh 2 Cell Welded Wire panels;  
360 Painted Grid; SoundScapes® Shapes triangle panels



Metalworks™ Mesh; Trellis, Lattice, and Scallops panels



DESIGN OPTIONS



*Provides a monolithic,  
no-reveal look in a variety of sizes and finishes  
for interior and exterior applications*

MetalWorks™ Linear – Synchro™ 6" M1 planks



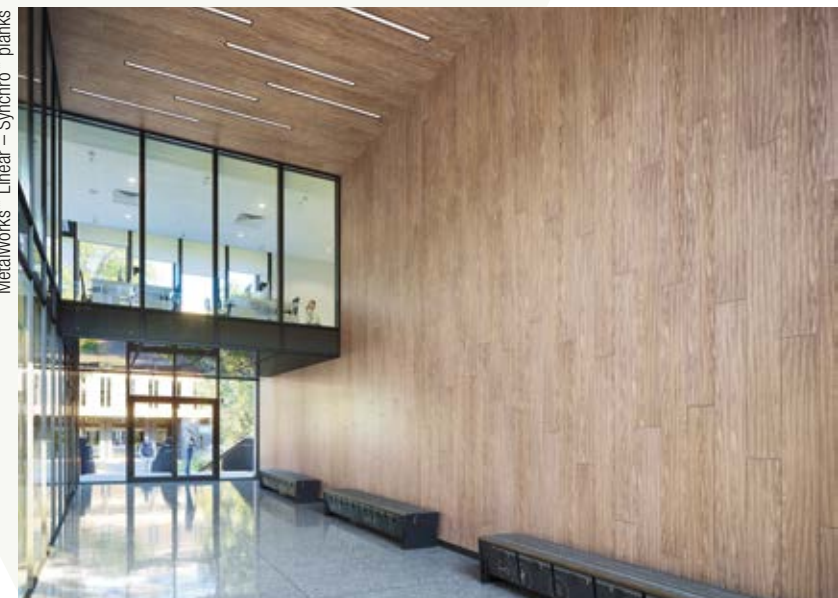
## METALWORKS™ Linear – Synchro™

### **NEW** Now Available for Interior Walls and Exterior Ceiling Applications

Smooth, monolithic MetalWorks™ Linear – Synchro™ system now available for interior wall and exterior ceiling applications, along with field-cut linear lighting integration options from partners Backlight® and XAL®.

- Plank width sizes from 2" – 13" for interior and exterior ceiling installations; 4" – 13" for interior walls
- Planks available in four standard metal finishes and 17 standard Effects™ Wood Looks finishes for both interior and exterior applications
- Enhanced sound absorption with M2 planks – 0.70 NRC, same as ceiling panels
- CleanAssure™ family of products – includes disinfectable planks, suspension systems, and trim
- Integrate field-cut linear lighting fixtures from Backlight® srl and XAL®
- MetalWorks™ Linear – Synchro™ for walls gives the desired linear plank look married with a familiar installation system and great wood looks
- Exterior planks tested to meet wind uplift classes 30, 60, and 90
- Ceiling & wall systems engineered and tested for all seismic areas

MetalWorks™ Linear – Synchro™ planks



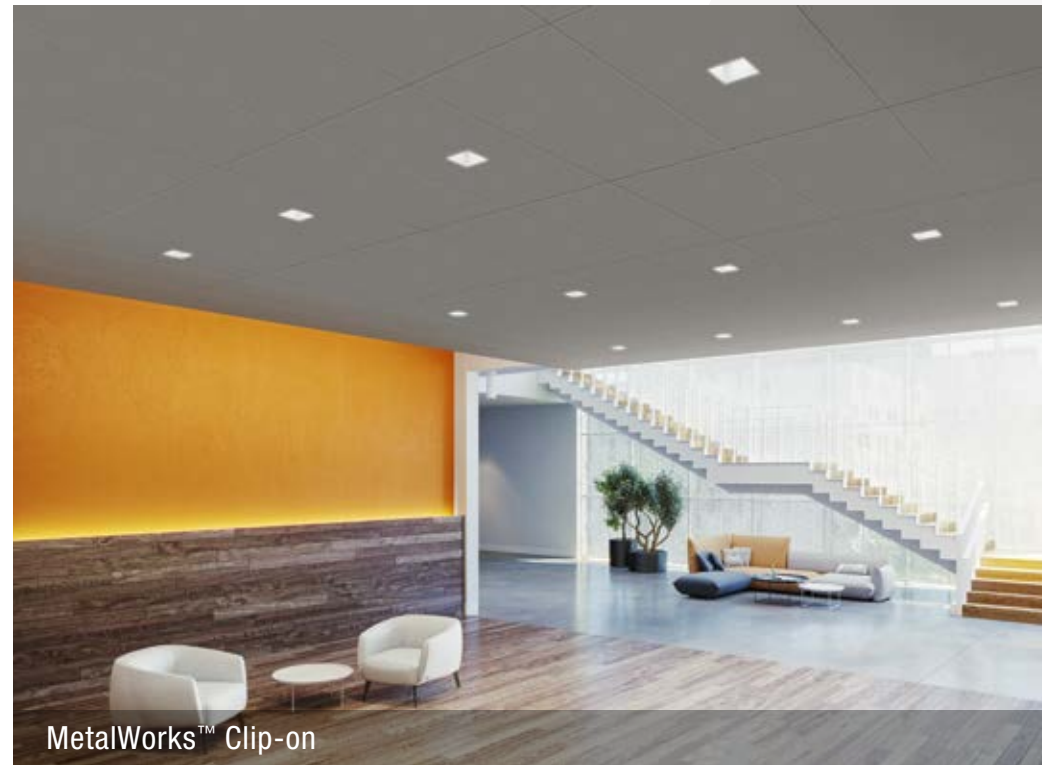
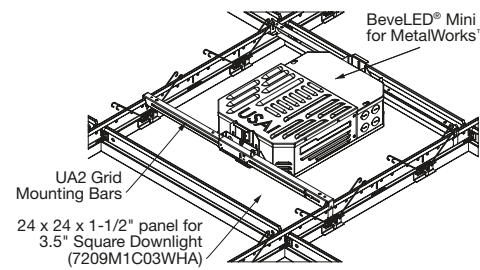
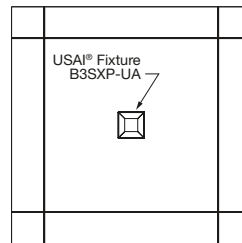
DESIGN OPTIONS & INTEGRATED LIGHTING



*Perfectly centered fixtures,  
perfectly cut tiles - every time*



USAI  
Lighting



MetalWorks™ Clip-On center-cut downlight panels

new

## METALWORKS™ Center-cut Panels for Recessed Downlighting

Precise factory-cut, metal ceiling panels are designed to seamlessly integrate with USAI® BeveLED® square trimless downlights.

- Centered USAI fixtures for flush-fit visual
- Downlight center-cut panels are part of the CleanAssure™ portfolio
- Clean, minimal trimless appearance in durable, factory-cut metal panels
- Pre-cut panels available in FAST134 program
- Pre-engineered and tested for fit and finish in all seismic areas
- Time and labor saving solutions – downlight fixtures are fully adjustable within the system so there is no cutting, no mess, and no need to remove panels
- Part of the Sustain™ portfolio meeting today's most stringent industry sustainability standards



SUSTAIN™  
High Performance Sustainable  
Ceiling Systems

INTEGRATED LIGHTING



*Light layering design made easy  
with a versatile ceiling solution*

**new AXIOM® Direct Light Covers**

for Specialty, Drywall, and ACOUSTIBuilt® Ceilings

Pair cove lighting with a wide variety of suspended ceiling options to achieve predictable lighting performance and worry-free design integration with select Armstrong® specialty ceilings, drywall, or ACOUSTIBuilt® ceilings.

- Part of a complete ceiling solution
- Pre-engineered, extruded aluminum light cove ideal for shallow plenum corridors and entryways
- Plug-and-play integration of lighting with partner products XAL® LENO® or Axis Click
- Control the finished aesthetics and maintain consistent fit and finish with this pre-engineered solution
- Part of the Sustain™ portfolio meeting today's most stringent industry sustainability standards



Axiom® Direct Light Cove with drywall or ACOUSTIBuilt® ceilings



Axiom® Knife Edge® Indirect Light Cove with Ultima® panels



Axiom® Direct Light Cove with MetalWorks™ Effects™ panels



Axiom® Indirect Light Cove with Optima® Vector® panels

**AXIOM® Indirect Light Covers**

for Specialty, Drywall, and ACOUSTIBuilt® Ceilings

Beautifully enhance light layering in your design with an indirect lighting system that fully integrates panels, suspension system, and lighting in one complementary solution.

INTEGRATED LIGHTING



## Acoustics and aesthetics



**24/7  
DEFEND™**  
Solutions for Healthier,  
Safer Spaces

CONTAIN CLEAN PROTECT



**TOTAL  
ACOUSTICS®**  
Sound Absorption (NRC)  
+ Sound Blocking (CAC)



**SUSTAIN®**  
High Performance Sustainable  
Ceiling Systems



ACOUSTIBuilt® Ceiling System

### ACOUSTIBuilt® Seamless Acoustical Ceiling & Wall System

Specify with confidence. We've thought of everything.

- Create the perfect seamless acoustical ceiling and wall system from one end of the building to the other, in wall-to-wall ceilings, cloud, and wall applications above 7'
- Get total noise control and floor plan versatility with Total Acoustics® ceiling panel options: NRC + CAC = Total Acoustics performance
- Similar installation/finishing methods to drywall ceilings
- Installs on Armstrong® Drywall Grid Systems
- Easier to install than acoustical plaster at a lower cost
- Create complex soffit designs with SimpleSoffit™
- Perfect integration with Axiom® Direct Light Coves for ACOUSTIBuilt ceilings – part of a growing line of coves, diffusers, and linear lighting integration options
- Wall Reveal for ACOUSTIBuilt panels provides crisp edge detailing from drywall to ACOUSTIBuilt Wall Panels



ACOUSTIBuilt® Seamless Acoustical Ceiling System,  
Cloud Application; AXIOM® Classic Trim

DETAILS MAKE THE DIFFERENCE



*Decorative or functional, Wall Reveals add design interest to monolithic surfaces*

Wall Reveals for drywall



Wall Reveal transition for drywall (lower) to ACOUSTIBuilt® panels (upper)



**new** **Armstrong® Wall Reveals**  
for Drywall and ACOUSTIBuilt® Walls

Wall Reveals create a precise horizontal or vertical design aesthetic using quality aluminum trim for a decorative transition from drywall to drywall or drywall to ACOUSTIBuilt® wall panels.

- Pre-engineered factory-finished extruded aluminum provides crisp edge detail
- Creates separation between drywall or ACOUSTIBuilt wall panels
- Intersection and corner options accommodate Wall Reveal designs to have a change in direction or wrap around corners
- Design with pre-engineered corners, intersections, and 90-degree angles



DETAILS MAKE THE DIFFERENCE



*Preserve design intent from concept to installation with discerning details*



Axiom® Core & Shell Shade Pocket and Optima® panels

**new AXIOM® Core & Shell Shade Pockets**

Supports a faster schedule with a versatile solution for any future ceiling system

Guarantee the fit and finish of the ceiling perimeter design with a shade pocket solution that can be installed in the core and shell building phase while providing flexibility for the tenant to choose the final shade and finishing trim.

- Quality control at the perimeter visible from inside and outside the building versus field-fabricated pockets
- High-quality, extruded aluminum solution for an integrated ceiling-to-perimeter transition
- Pre-engineered 3-sided pockets integrate with all ceiling types and conditions, including open plenum
- “Future-proof” system that can receive any current or future roller shade product
- Part of the Sustain™ portfolio meeting the most stringent industry sustainability compliance standards today

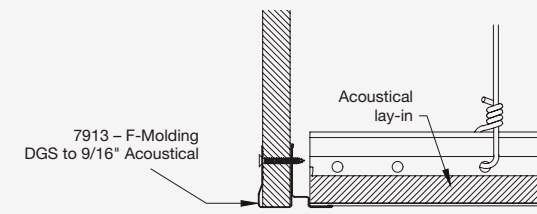


**new New Transition Moldings**

Ensure best design detailing for a seamless transition between an acoustical ceiling and vertical drywall

This pre-engineered transition provides an ideal aesthetic and allows tegular panels to lay flush against the molding.

- Best fit and finish for the perimeter of a space where a 3-5/8" stud drop is typically detailed
- Profile options for 15/16" and 9/16" Armstrong® suspension systems and Drywall Grid System
- Integrated acoustical molding with drywall taping flange
- Part of our portfolio of pre-engineered solutions for common conditions



SimpleSoffit™ drywall soffit with CALLA® panels

**new SIMPLESOFFIT™ Framing for Drywall & ACOUSTIBuilt® Panels**

Control the finished aesthetic with a pre-engineered solution that is factory-made to your soffit dimensions

- Maximize structural efficiency while minimizing material use
- Applies modular construction practices to improve project schedules
- Pre-fabricated soffit framing solution made to your precise design specifications
- Promotes healthier, safer jobsites with fewer installers, spaced apart

DETAILS MAKE THE DIFFERENCE



*Complete ceiling solutions for data centers and other structural ceiling applications*



DynaMax™ with Axis TrayFit™ lay-in lighting



DynaMax with JLC-Tech TeraLyte™ lighting

### Data Center Ceiling System



The only complete structural ceiling solution with integrated ceiling tiles, lighting, and diffusers



Data center structural grid solutions are expanding with new lighting and diffuser options, as well as a new standard 48" x 48" Optima® PB Ceiling Panel for DynaMax™ grid.



- Pre-engineered fixtures and components for proper fit and finish in the oversized DynaMax structural suspension system
- Multiple light fixture options from Vode®, JLC-Tech and Axis integrate seamlessly to DynaMax suspension system
- New T-Bar LED™ fixture integration from JLC-Tech for Prelude® XL Max™
- Integrated air diffuser options from Price® for DynaMax
- New 48" x 48" ceiling panel specially sized and engineered for the DynaMax suspension system
- DynaMax and Prelude XL MAX are part of the Sustain™ portfolio meeting today's most stringent industry sustainability standards



DETAILS MAKE THE DIFFERENCE





## Healthy Spaces at Armstrong

### Our Living Lab

**On the cover:** It's our new Living Lab at our Corporate Headquarters in Lancaster, PA. The 10,000 sq. ft., fully-equipped office space occupies the main floor of the Avenue, our customer experience showroom. It's a living, breathing space where new solutions take shape, from systems creating cleaner air and enhancing effectiveness of HVAC systems to piloting new installation methods, materials, shapes and design concepts.

Employees work in the space, providing feedback on a variety of individual and collaborative areas that are great looking, and designed with optimal acoustics, lighting, cleanliness, comfort, and exceptional air quality in mind ... in other words, healthy spaces.

The Living Lab uses digital sensors that connect to the building management system to report metrics such as temperature, air quality, occupancy density, cleaning and disinfecting alerts, and other biomechanical data that is displayed real-time on large monitors to assure people that they can feel confident in their healthy surroundings while working in the building.

The goal of this Living Lab, as well as focus areas in our manufacturing facilities, is to learn how we can help make post-COVID spaces safer, more comfortable, more efficient, and more inspiring places to be.

Revit® is a trademark of Autodesk, Inc.; AutoCAD® is a trademark of Autodesk, Inc., and/or its subsidiaries and/or affiliates, in the United States; Axis and Axis Click are trademarks of Axis Lighting Inc.; Backlight® is a trademark of BACKLIGHT srl; Price® is a trademark of Price Industries Limited; XAL® and Leno® are trademarks of XAL, LLC; Vode® is a trademark of Vode Lighting LLC; USAI® and BevLED® are trademarks of USAI, LLC; T-Bar LED™, JLC-Tech and TERALyte™ are trademarks of JLC-Tech, LLC.; all other trademarks used herein are the property of AWI Licensing LLC and/or its affiliates. © 2021 AWI Licensing LLC • Printed in the United States of America

[armstrongceilings.com/commercial](http://armstrongceilings.com/commercial)

Cover Photo:  
Prelude 360° Grid, MetalWorks™  
and Tectum® Acoustical Panels,  
VidaShield UV24™ Air Purification System

**Armstrong**  
CEILING & WALL SOLUTIONS





*Create a sense of well-being with*

- Cleaner air
- Disinfectable surfaces
- Brighter, quieter spaces
- Sustainable materials
- Design choices that inspire

# What's **NEW**

2021/1 –  
24/7 Defend Portfolio



# A healthy space is ... a space supportive of well-being

In recent research with our customers, you shared that helping occupants feel safe and creating a space that is supportive of well-being are front & center.

- Clean, contained, controlled air
- Disinfectable surfaces
- Quieter, brighter, calmer surroundings
- Ways to maintain social distance
- Beautiful, nurturing, sustainable materials & inspiring designs

Throughout the Armstrong portfolio, a multitude of solutions await you to help create a sense of well-being and confidence for those returning to work, learn, heal, and play. Let us know how we can help.



## Making Space For A Resilient Future

Key Findings Of The 2021 Indoor Occupants Pulse Point Survey

### Preparing workspaces for returning workers isn't just about COVID-related safety improvements.

**86%**

of respondents expect to feel very or somewhat safe in their workspace when they return to work.

**83%**

of respondents expect to feel that their workspace will be prepared and adaptable for future events such as another pandemic or the changing climate.

**84%**

of respondents expect to feel that their workspace will be an environment which is supportive of the well-being of people.

### Addressing indoor workspace should move beyond just fixing pandemic-related health and safety concerns toward approaches that are more holistic in nature.

Workspaces can and should be prepared to be safe and healthy, supportive of well-being, and adaptable for the future.

Factors important to creating resilient workspaces	Very important	Overall importance
Regular cleaning and disinfecting surfaces	77%	92%
All ventilation that is a full garage	69%	92%
Particulate	63%	88%
Layout of space for social distancing	53%	88%
Touchless faucets	53%	80%
Touch disinfectant workspaces and air	50%	80%
Open for group collaboration	49%	88%
Access to outdoors	49%	80%
Open-circuit ventilation and exhaust	45%	80%
Lots of natural light	42%	84%
Windows that open	42%	78%
Windows that keep out heat	41%	80%

Volatility and ongoing changes to spaces caused by pandemics, climate change and more, are here to stay, but working safely and comfortably within indoor environments is possible.

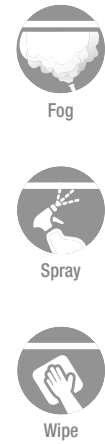
WHAT MAKES A HEALTHY SPACE?



**Clean the Air:**  
Armstrong VidaShield UV24™  
Air Purification System



**Disinfectable Ceilings:** CleanAssure™  
Portfolio of Ceilings, Walls, & Installation Systems



Here's our latest portfolio of solutions to help you address building occupant concerns and create healthier spaces.

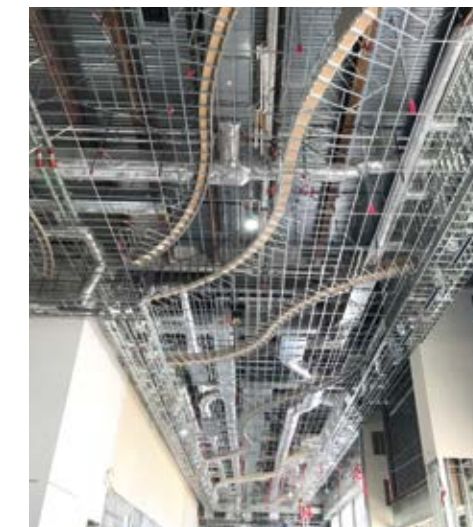
**THE 24/7 DEFEND™ PORTFOLIO OF PRODUCTS HELP CONTAIN, CLEAN, AND PROTECT**

The 24/7 Defend™ Portfolio is ideal for any environment to reassure people that they are surrounded by materials and systems that work 'round the clock to keep them healthier and safer.

**Contain and Control Air:** AirAssure™ Ceiling Tiles



**Protect:**  
Partitions, Dividers & Screens



**Protect:**  
Portfolio of Pre-Engineered Installation Solutions

CONTAIN, CLEAN, AND PROTECT







## Contain and control the air

### AirAssure™ Ceiling Panels

- Ceiling panels with integral AirAssure™ seal contribute to cleaner, healthier, safer indoor air quality for every space
- Retrofit options for improved air containment
- Reduce air leakage through the ceiling plane in a space up to 4X compared to standard tiles
- Increase effectiveness of in-ceiling air filtration and purification systems up to 40%
- Easy conversion to negative or positive pressure-controlled spaces (without hold-down clips)
- Convert existing spaces to containment areas quickly using existing suspension systems
- MEP remains easily accessible

## New sizes and textures

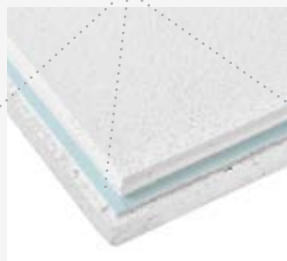
### Calla® Health Zone™ / Ultima® Health Zone™ / School Zone® Fine Fissured™ AirAssure™ Panels

- Easy retrofit option for improved air control in office, education, healthcare, assisted living facilities, and anywhere improved indoor air quality is desired
- new** – Clean Rooms up to ISO Class 5 (Class100) – Calla® and Ultima® Health Zone™ AirAssure™
- Available in 9/16" & 15/16" Tegular edges:
- new** – School Zone® Fine Fissured™ AirAssure™ – Medium texture, 24" x 24"; 24" x 48"
- new** – Calla® Health Zone™ AirAssure™ – Smooth texture, 24" x 24"; NEW 24" x 48"
- Ultima® Health Zone™ AirAssure – Fine texture, 24" x 24"

Factory-sealed panel edges



Calla® Health Zone™ AirAssure™



Ultima® Health Zone™ AirAssure™



School Zone® Fine Fissured™ AirAssure™

Increase effectiveness of HVAC to control and improve air flow



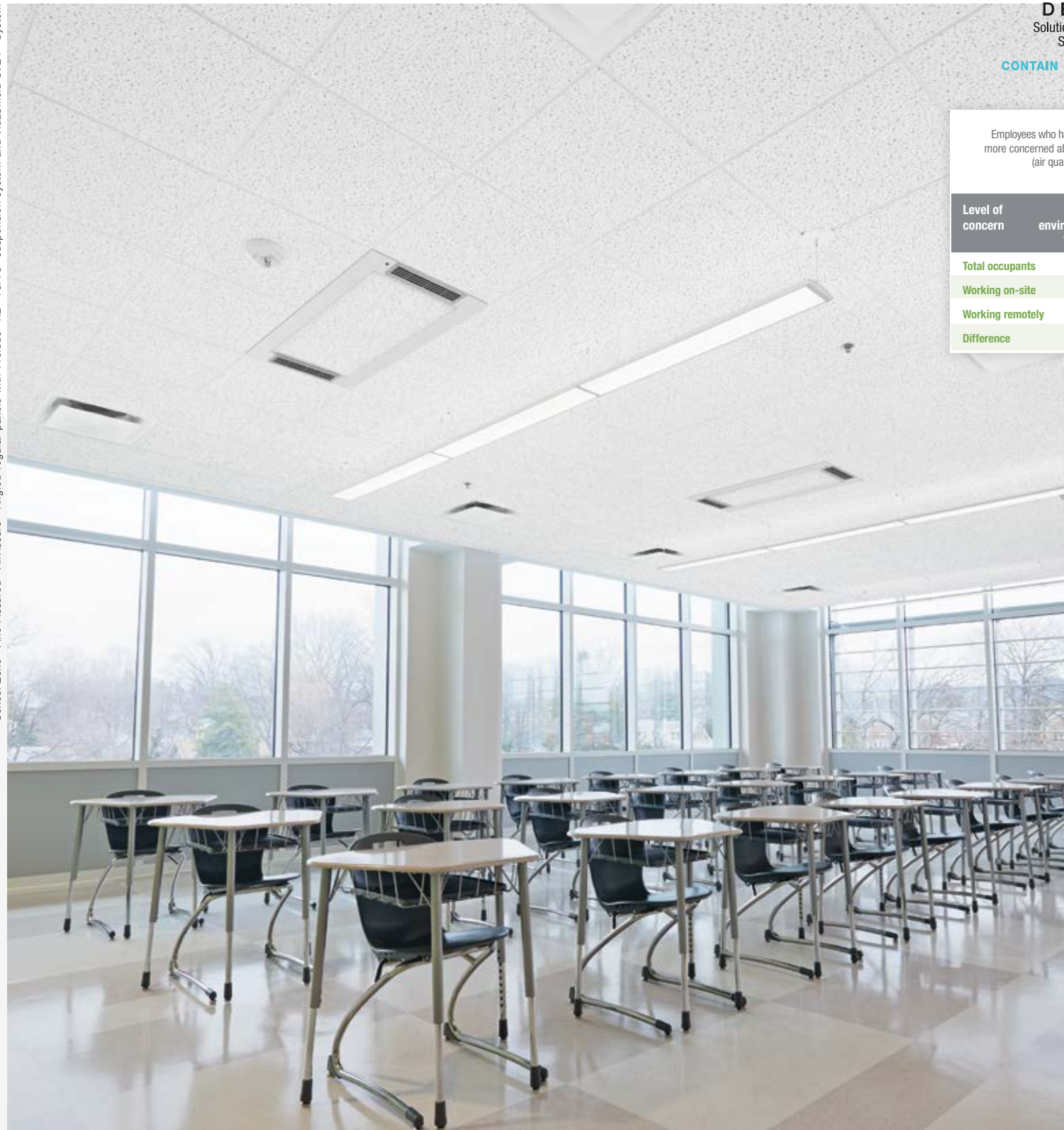
24/7 DEFEND™  
Solutions for Healthier, Safer Spaces

CONTAIN CLEAN PROTECT

Employees who have been remote are **19%** more concerned about the indoor environments (air quality and surfaces).

Level of concern	Concerned about indoor environment (air quality, surfaces)		
	Very	Some	Concern
Total occupants	29%	36%	65%
Working on-site	25%	32%	57%
Working remotely	38%	38%	76%
Difference	13%	6%	19%

School Zone® Fine Fissured™ AirAssure™ Angled Tegular panels with Prelude® XL® 15/16" suspension system and ViroShield DV24™ System



CONTAIN AND CONTROL THE AIR



Clean the air 24 hours a day, 7 days a week



**24/7 DEFEND™**  
Solutions for Healthier, Safer Spaces

CONTAIN CLEAN PROTECT

Employees who have been remote are **19%** more concerned about the indoor environments (air quality and surfaces).

Level of concern	Concerned about indoor environment (air quality, surfaces)		
	Very	Some	Concern
Total occupants	29%	36%	65%
Working on-site	25%	32%	57%
Working remotely	38%	38%	76%
Difference	13%	6%	19%

## VidaShield UV24™ Air Purification

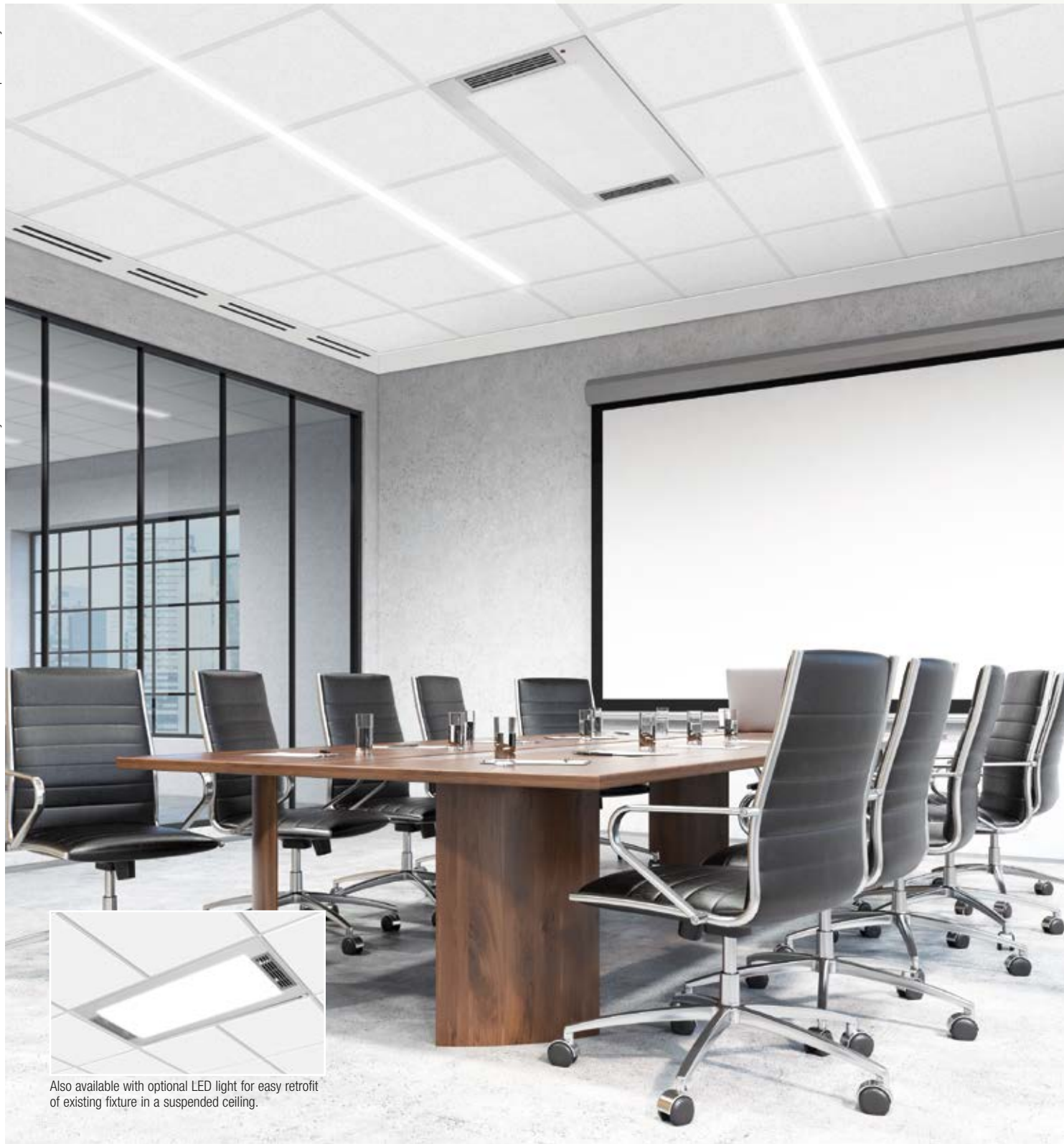
### **new** Continuous Air Cleaning

- Improves Indoor Air Quality
- Seamlessly integrates with popular Armstrong® ceilings and suspension system finishes including Ultima® HealthZone™ AirAssure™ panels and School Zone™ Fine Fissured™ AirAssure™
- No staff intervention needed to operate
- 24/7 continuous air cleaning reduces the spread of infectious aerosols through the air and settling on surfaces
- Proven UV-C air-cleaning technology
- Patented self-contained UV-C chamber hidden in the ceiling plenum
- Neutralizes 97% of pathogens in aerosols on the first pass of air through UV-C chamber in 3rd-party test conditions
- Increase air changes for better ventilation
- Increased ACH (air changes per hour) is recommended by ASHRAE and CDC as a COVID-19 mitigation strategy
- Increase germicidal efficacy without the production of ozone
- Safe for use in occupied spaces



CLEAN THE AIR

VidaShield UV24™ Air Purification System with Ultima® Health Zone™ Panels and Prelude® 15/16" Suspension System



Also available with optional LED light for easy retrofit of existing fixture in a suspended ceiling.



# Disinfect with confidence

## CLEANASSURE™

Cleanable, disinfectable ceiling panels, specialty ceilings, suspension systems, trims, and partitions that help make spaces cleaner and healthier.

Before COVID, panel cleanability was important in specific applications, like clean rooms, kitchens, and laboratories. Now, with recommendations from the CDC for disinfecting and cleaning all types of spaces beyond special applications, Armstrong has tested our most popular mineral fiber and fiberglass ceiling tiles, specialty ceilings, suspension systems, trims and partitions to give you the information you need on how to clean (fog, spray, or wipe) and which EPA approved disinfectants may be used. So you can disinfect and clean with confidence.

See our website for a full range of CleanAssure™ products

**CEILING TILES**  
Before COVID, panel cleanability was important in specific applications, like clean rooms, kitchens, and laboratories. Now, with recommendations from the CDC for disinfecting and cleaning all types of spaces beyond special applications, Armstrong has tested our most popular mineral fiber and fiberglass ceiling tiles, specialty ceilings, suspension systems, trims and partitions to give you the information you need on how to clean (fog, spray, or wipe) and which EPA approved disinfectants may be used. So you can disinfect and clean with confidence.

**CEILING TILE SOLUTIONS**

- CALL HEALTH ZONE
- OPTIM HEALTH ZONE
- ULTRAHEALTH ZONE
- CLICA
- ULTRALIGHT AIR TILES AIR

**SPECIALTY CEILINGS**  
Sometimes, we don't think of specialty ceilings and cleanability. Now, with new recommendations from the CDC for disinfecting and cleaning all types of spaces, Armstrong has tested specialty ceilings to give you the information you need to disinfect and clean.

**SPECIALTY CEILING SOLUTIONS**

- HEALTHCARE TILES
- WOODWORK & LINEAR SYSTEMS
- WOODWORK LINEAR SYSTEMS
- WOODWORK LINEAR SOLID
- METALWORK SHAPES FOR HOSPITALS

**INSTALLATION SYSTEMS**  
While you're disinfecting or cleaning ceilings, can you also use those same cleaning products on the suspension systems and products in our cleaning recommendations or think to question about cleaning your entire ceiling system, then, we'll do it.

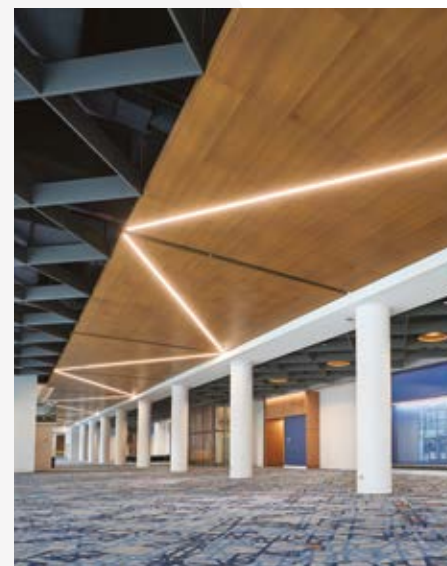
**INSTALLATION SYSTEM SOLUTIONS**

- BLUETOOTH PANEL
- ENVIRONMENTAL LIGHT PANELS FOR PREVIOUS PL
- BLUETOOTH PL
- ENVIRONMENTAL
- SUPREME II, 12"

**PARTITIONS, DIVIDERS & SCREENS**  
Transform meeting spaces using artfully designed, ergonomic, and easily cleanable wall partitions, available in standard or full. Disinfect and clean with confidence, as you share functional environments for today and tomorrow.

**PARTITION, DIVIDER & SCREEN SOLUTIONS**

- INFUSIONS
- HYBRID
- PARTITIONS



24/7  
**DEFEND™**  
Solutions for Healthier,  
Safer Spaces

CONTAIN CLEAN PROTECT

Employees who have been remote are **19%** more concerned about the indoor environments (air quality and surfaces).

Level of concern	Concerned about indoor environment (air quality, surfaces)		
	Very	Some	Concern
Total occupants	29%	36%	65%
Working on-site	25%	32%	57%
Working remotely	38%	38%	76%
Difference	13%	6%	19%

CLEAN AND DISINFECT



Reimagine floor plans while safely and aesthetically defining spaces



**24/7 DEFEND™**  
Solutions for Healthier, Safer Spaces

**CONTAIN CLEAN PROTECT**

Employees who have been remote are **22%** more concerned about social distancing than those who are already on-site or who never left their workspace.

Level of concern	Concerned about # people, social distancing in workspace		
	Very	Some	Concern
Total occupants	29%	36%	65%
Working on-site	25%	30%	55%
Working remotely	34%	43%	77%
Difference	9%	13%	22%

Infusions™ Resilient Partitions



Moz Designs Acrylic Dividers

## Partitions, Dividers, and Screens

Create navigation flow and accommodate social distancing

### Standard

Infusions™ Resilient Partitions

Transform existing shared spaces into segmented areas with standard large format wall panels artfully designed in 15 patterns and colors to separate areas and provide visual barriers.

### Custom

Turf Design

Choose from a large portfolio of custom barriers and screen solutions in a variety of patterns, sizes, and colors that can help separate from distractions and increase visual and acoustical privacy on-demand.

Moz Designs

Create beautifully safe spaces with materials that meet the moment.

Navigate flow and establish boundaries for safe distancing with new acrylic materials, and a variety of metal options.

Arktura

Easily divide and define spaces, creating calm semi-enclosed spaces that provide tools for comfort, privacy, and safety. Reduce the impact of noise through flexible designs and high performance.

Turf Design Flow Wall



Arktura™ Custom Metal Screen

FLOOR PLAN FLEXIBILITY



*Fewer installers on site with solutions that get you on and off the job faster, easier, better*



**24 / 7  
DEFEND™**  
Solutions for Healthier,  
Safer Spaces

**CONTAIN CLEAN PROTECT**





Axiom® Indirect Curved Light Cove

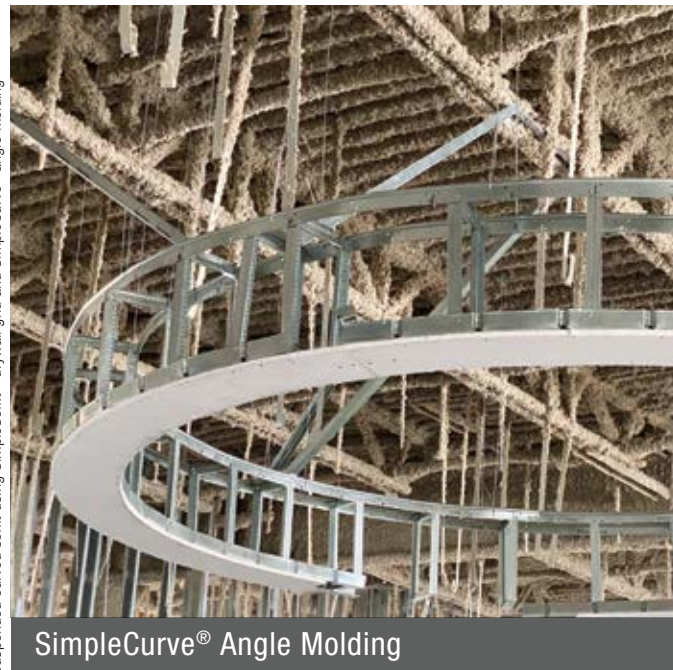
Suspended curved light cove using SimpleSoffit™ drywall grid with SimpleCurve™ angle molding

## Pre-Engineered Solutions

Pre-engineered solutions from Armstrong Ceilings maintain original design integrity while reducing man hours and number of installers required for the job. Tackle the challenge of social distancing hand-in-hand with solutions that take the risk and guesswork out of onsite fabrication.

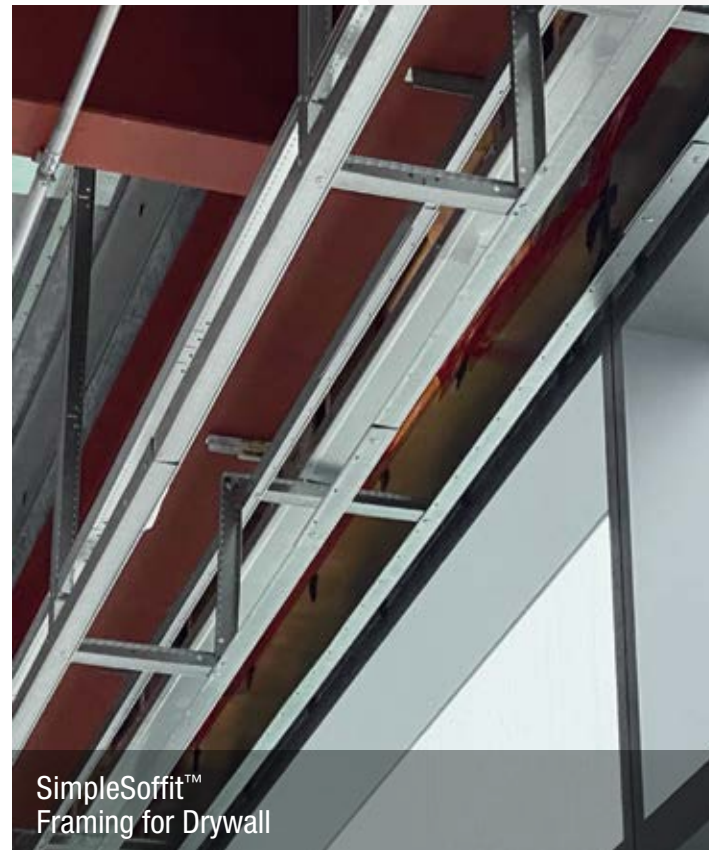
A wide variety of new and complementary solutions:

-  – Bend-and-click soffit solution eliminates pre-fabrication time and labor
-  – Direct and indirect light cove solutions ensure fit and finish for acoustical and drywall perimeters
-  – Transition moldings ensure a precise fit between any two Armstrong® ceiling systems or changes in ceiling height



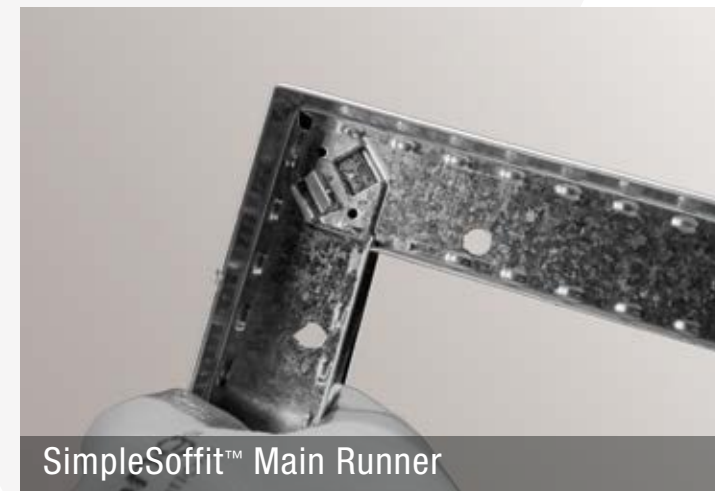
SimpleCurve® Angle Molding

Suspended curved soffit using SimpleSoffit™ drywall grid and SimpleCurve® angle molding



SimpleSoffit™ Framing for Drywall

SimpleSoffit™ drywall framing with Knurled Angle Molding



SimpleSoffit™ Main Runner

SimpleSoffit™ drywall grid bends and clicks into shape right out of the box

SAFER, HEALTHIER JOBSITES





## Healthy Spaces at Armstrong

### Our Living Lab

**On the cover:** It's our new Living Lab at our Corporate Headquarters in Lancaster, PA. The 10,000 sq. ft., fully-equipped office space occupies the main floor of the Avenue, our customer experience showroom. It's a living, breathing space where new solutions take shape, from systems creating cleaner air and enhancing effectiveness of HVAC systems to piloting new installation methods, materials, shapes and design concepts.

Employees work in the space, providing feedback on a variety of individual and collaborative areas that are great looking, and designed with optimal acoustics, lighting, cleanliness, comfort, and exceptional air quality in mind ... in other words, healthy spaces.

The Living Lab uses digital sensors that connect to the building management system to report metrics such as temperature, air quality, occupancy density, cleaning and disinfecting alerts, and other biomechanical data that is displayed real-time on large monitors to assure people that they can feel confident in their healthy surroundings while working in the building.

The goal of this Living Lab, as well as focus areas in our manufacturing facilities, is to learn how we can help make post-COVID spaces safer, more comfortable, more efficient, and more inspiring places to be.

VidaShield UV24™ is a trademark of Medical Illumination International, Inc.;  
All other trademarks used herein are the property of AWI Licensing LLC and/or its affiliates.  
© 2021 AWI Licensing LLC • Printed in the United States of America

[armstrongceilings.com/commercial](https://armstrongceilings.com/commercial)

Cover Photo:  
Calla® AirAssure™ Ceiling Panels with  
VidaShield UV-24™ Air Purifiers and  
AcoustiBuilt® Seamless Drywall  
Ceiling System

**Armstrong**<sup>®</sup>  
CEILING & WALL SOLUTIONS