



What's
NEW

Spring 2022



MetalWorks™ Torsion Spring

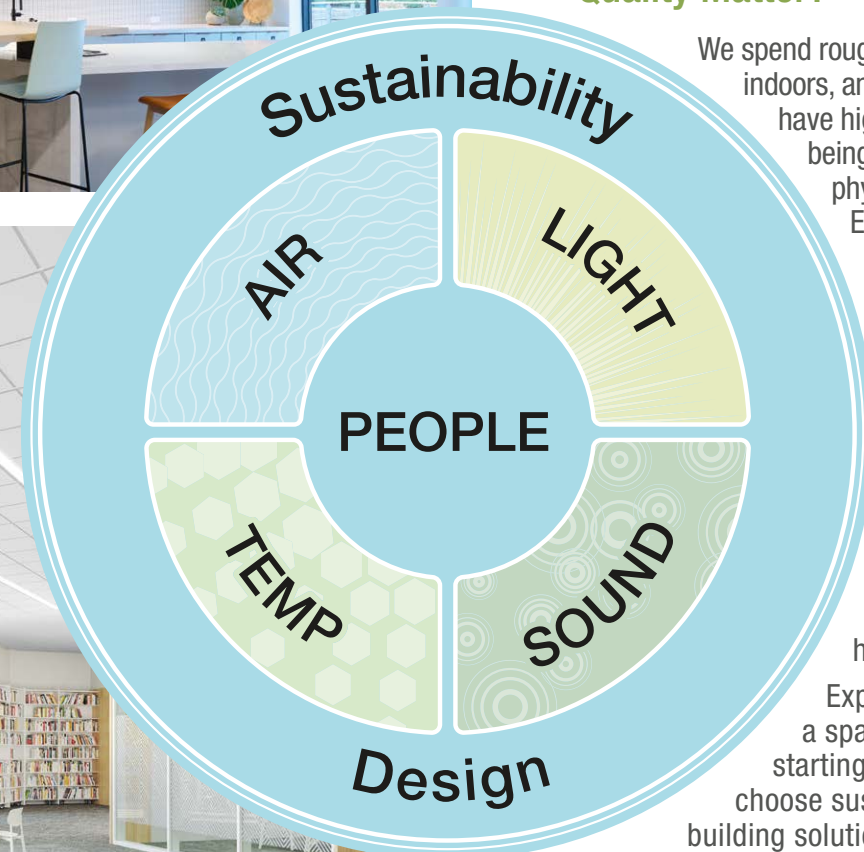


Why Does Indoor Environmental Quality Matter?

We spend roughly 90% of our lives indoors, and the past few years have highlighted how our well-being is directly affected by our physical surroundings. Indoor Environmental Quality (IEQ) consists of several key factors: air, sound, light, temperature, and more.

Making sure we have healthy air, impactful acoustics, sufficient lighting, and thermal comfort are essential to health and well-being in spaces where we live, work, learn, heal, and play.

Explore how you can create a space with outstanding IEQ, starting at the ceiling, when you choose sustainable, healthy building solutions.



Calla® Health Zone™ AirAssure™ with VidaShield UV24™ Air Purification System, Tectum® DesignArt™ – Shapes Direct-Attach walls



Optima® Health Zone™ ceiling panels

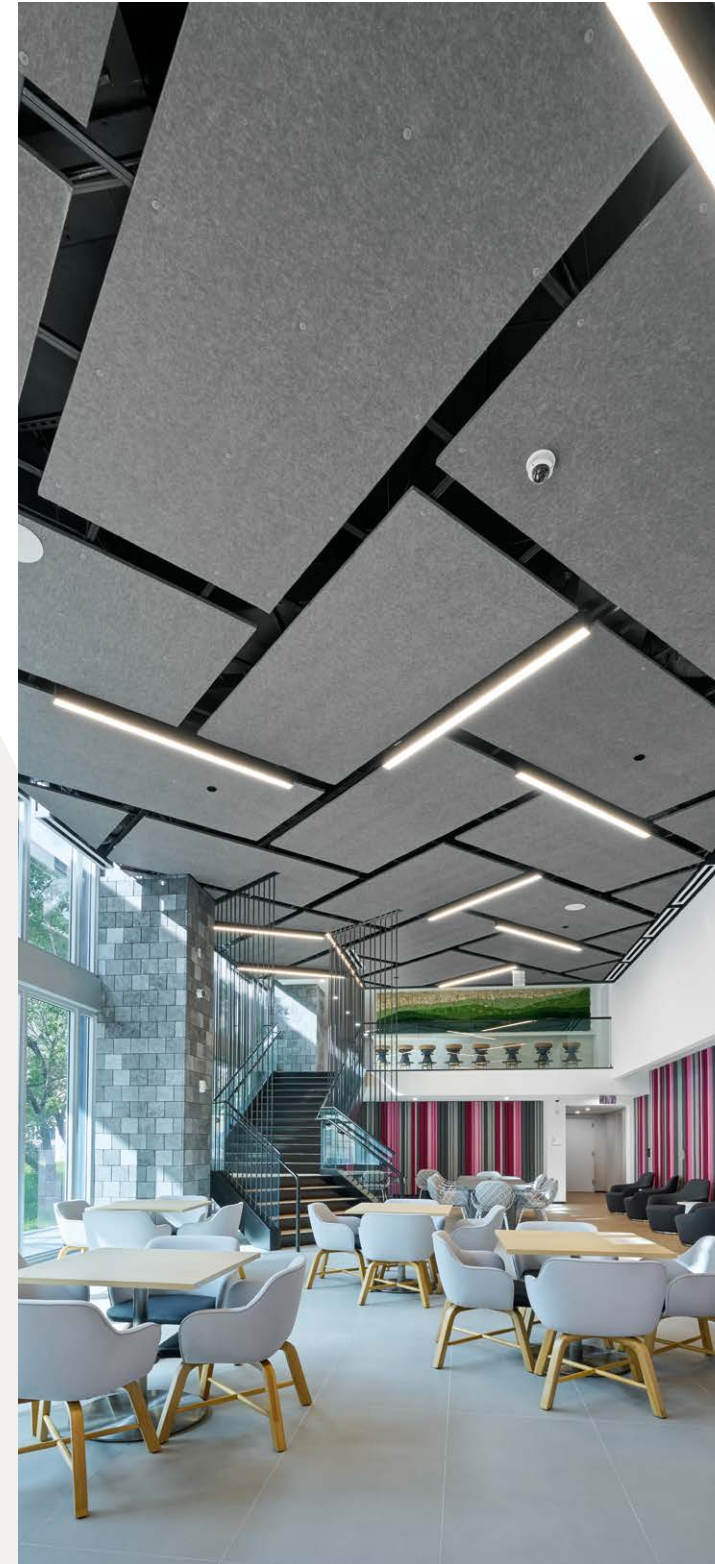
AcoustiBuilt® Seamless Acoustical Ceiling System



MetalWorks™ Linear – Diverge™ planks



Tectum® DesignArt™ – Shapes Direct-Attach walls



FeltWorks® acoustical panels

Healthy and Circular Products

It's easy to find and specify sustainable ceiling systems – just look for the Sustain® icon.

– Sustainably Sourced Products

Deliver products and solutions from healthy, sustainable materials by eliminating chemicals of concern and providing transparency through our Declare® labels, EPDs, and HPDs.

– Circular Products

Assist in meeting your circularity and waste diversion goals through the Armstrong Ceiling Recycling Program. We use raw materials with recycled content in order to lower the carbon footprint of our products.

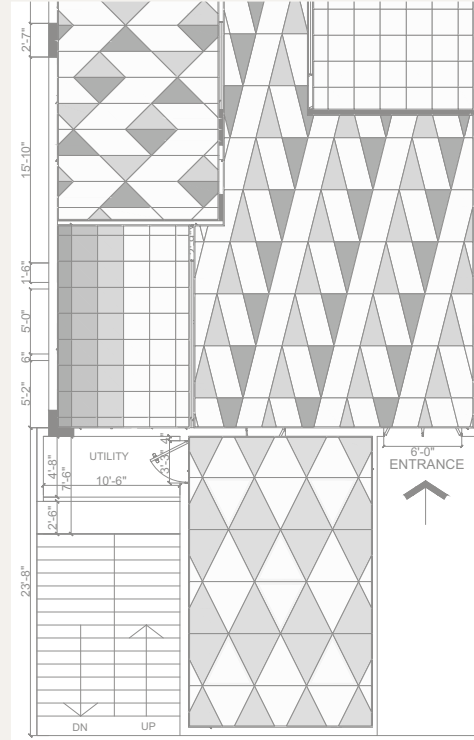
– Reduced Carbon and Water Footprint

Produce ceiling solutions that facilitate the reduction of embodied carbon in your projects. Through our EPDs and collaboration with EC3 Tool, we provide transparency to embodied carbon information.



SUSTAIN®
High Performance Sustainable
Ceiling Systems

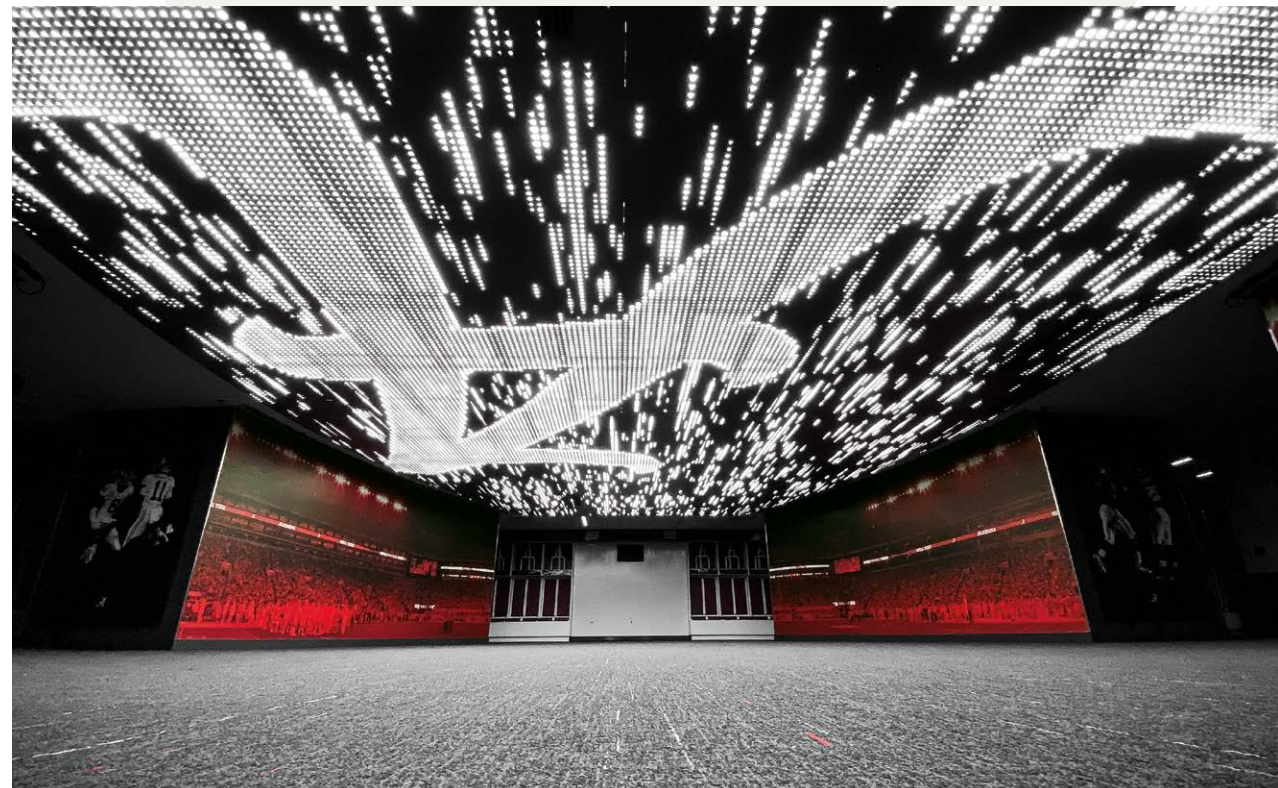
MetalWorks™ Torsion Spring Strapes



ProjectWorks® Design and Pre-construction Service

ProjectWorks® offers customers complementary ceiling design and pre-construction services, reducing risk and increasing confidence with accurate drawing packages that support product estimates and installation. Services include:

- Collaborative design for unique and standard ceiling concepts
- Comprehensive detail and layout drawings
- Crisp partner-component integration
- Optimized layouts to reduce cost and material
- Complete and quick-turnaround drawing packages that contain:
 - RCP dimensioned layout
 - Panel, suspension, and hub schedules
 - Material quotes and bill of materials



MetalWorks™ Torsion Spring with custom perforation

VidaShield UV24™ Air Purification System

New Look and More Ways to Create Healthier Spaces

- Integrated vents create a sleeker aesthetic
- Enhanced fit to seamlessly lay in standard suspension systems
- New trim kits enable more applications
 - Easy integration with drywall or, for Total Acoustics® performance, AcustiBuilt® seamless acoustical ceilings
 - Simple installation options for exposed structure
 - Surface mount conditions for existing spaces

VidaShield UV24 for exposed structure with FeltWorks® Blades



VidaShield UV24 for exposed structure



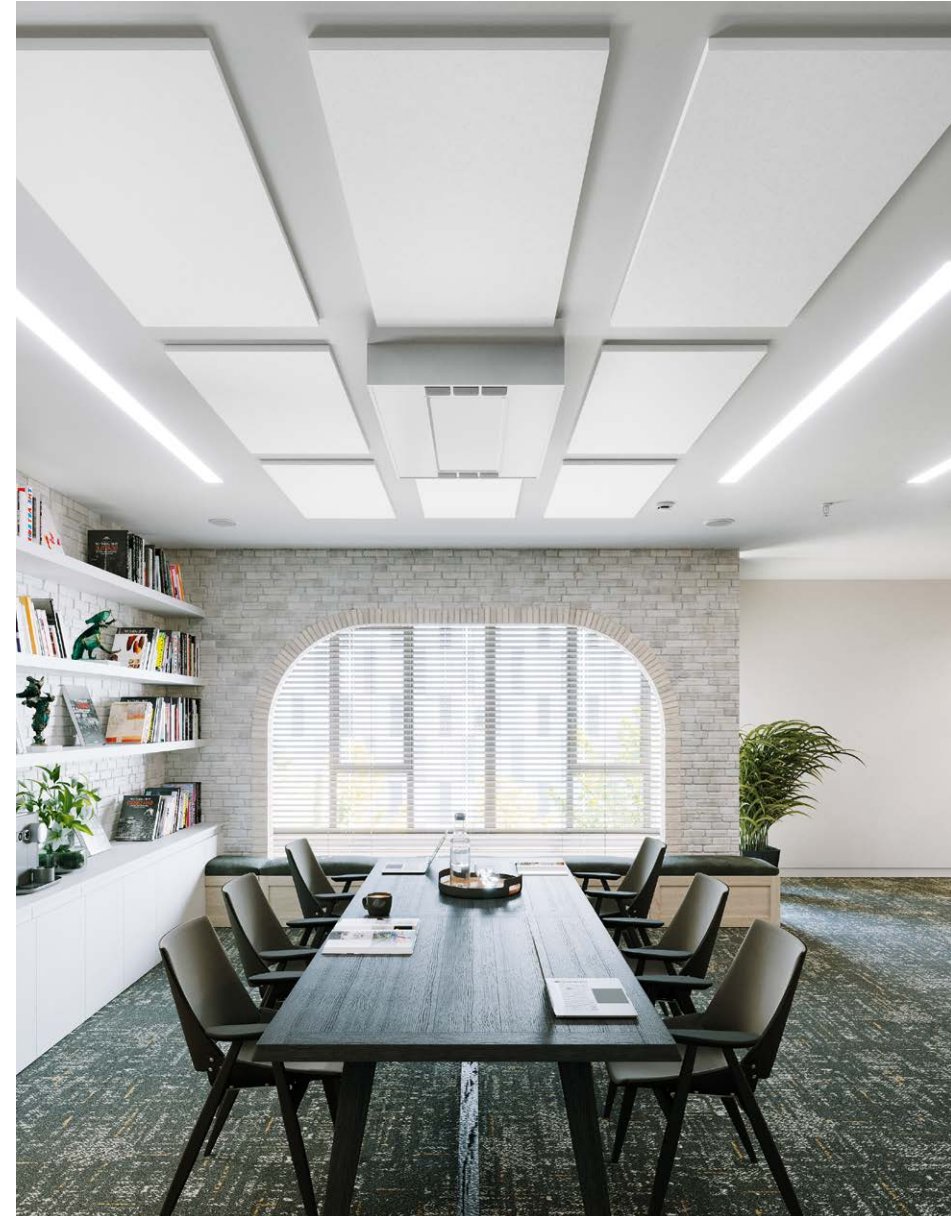
VidaShield UV24 with AcustiBuilt seamless acoustical ceiling



VidaShield UV24 – surface mount



VidaShield UV24 Air Purification System with AcustiBuilt seamless acoustical ceiling

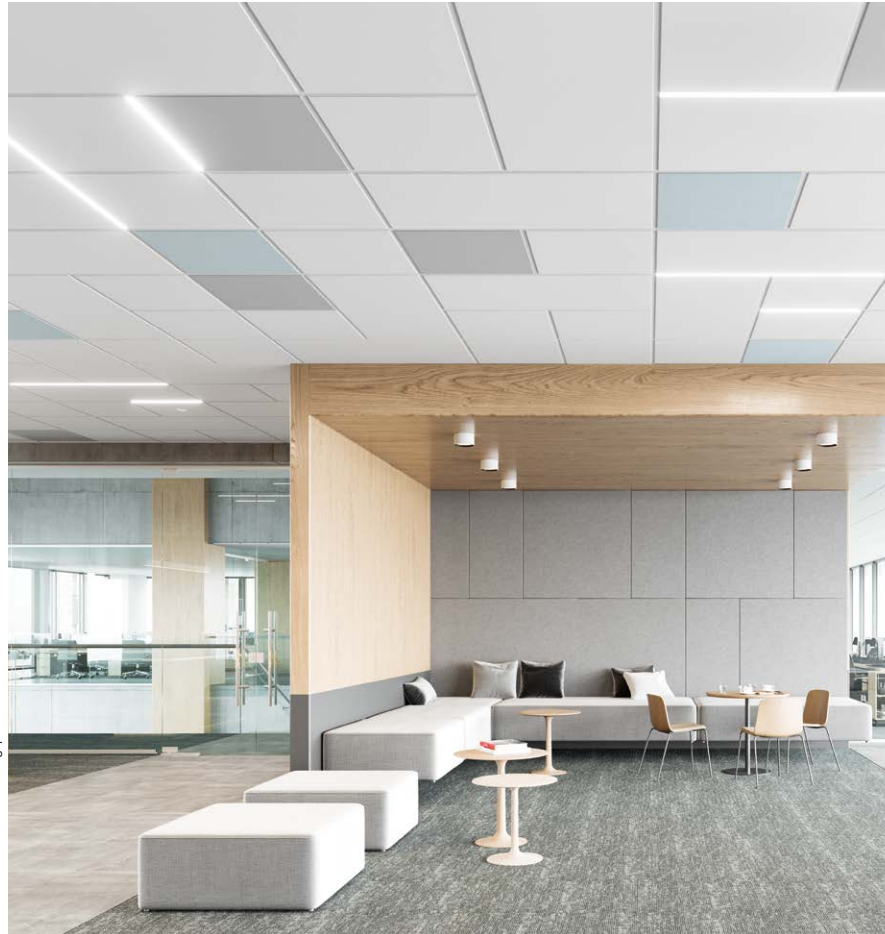


Lyra® PB Direct - Apply ceiling panels with VidaShield UV24 – surface mount

Health Zone™ Ceiling Panels

These go-anywhere ceilings combine exceptional acoustical performance and sustainability, contributing to improved indoor air quality.

- Get total noise control and floor plan versatility with Total Acoustics® ceiling panels: NRC + CAC = Total Acoustics Performance
- Exceptional durability & cleanability – impact-, scratch-, and soil-resistant.
- CleanAssure™ – safe for use with disinfectant cleaners
- Mold-, mildew-, and bacteria-resistant



Calla Health Zone ceiling panels



Calla Health Zone AirAssure, Vidashield UV24 Air Purification System

AirAssure™ Ceiling Panels

Factory-gasketed edges contribute to cleaner, healthier, safer indoor air quality for every space.

- 6 New Items – 24" x 24" and 24" x 48" Square Lay-in
- Seamlessly integrates with the Armstrong Vidashield UV24™ Air Purification System to improve air quality (Ultima® Health Zone™ AirAssure™ and School Zone® Fine Fissured™ AirAssure™)
- Factory-gasketed edges reduce air leakage through the ceiling plane in a space up to 4x compared to panels without AirAssure performance
- Clean Rooms up to ISO Class 5 (Class 100) using standard non-gasketed suspension systems (Calla® and Ultima Health Zone AirAssure)



CALLA Health Zone AirAssure Lay-in

ULTIMA® AirAssure™ Panels for DynaMax® Structural Grid

We now offer Ultima® AirAssure™ Panels for the DynaMax® Structural Aluminum Suspension System – 24" x 24" and 24" x 48" nominal sizes.

- Provides a smooth visual with Total Acoustics performance with the added benefit of AirAssure factory-gasketed edges
- Reduces air leakage through the ceiling plane in a space compared to panels without AirAssure performance
- Easy conversion to negative or positive pressure-controlled spaces (without hold-down clips)
- Provides increased temperature and air containment for data centers

DynaMax ceiling system



PTDC Shallow Plenum LED Troffer for DynaMax Grid

New Integrated Lighting Partner for DynaMax Ceiling Systems – H.E. Williams

H.E. Williams designed a new standard shallow plenum troffer (in 24" x 24" and 24" x 48" nominal sizes) specifically for the DynaMax structural grid system.

- Pre-engineered, certified fit-and-finish fixtures and components
- Lighting fixtures fit seamlessly into grid
- Another partner portfolio for additional options when choosing lighting fixtures for DynaMax ceiling systems
- Integrated ceiling solutions with compatible components designed for data centers



WOODWORKS® Grille – Forté

Solid Wood Panels with Notched Backers

Enhanced design featuring dozens of standard panel configurations and finishes for beautiful grille visuals.

- Over 30 standard solid wood panel configurations in 48", 72" and 96" lengths
- 11 on-trend standard finishes on solid poplar are tinted to replicate naturally occurring wood tones
- Enhanced structural design with notched alignment backers minimize the naturally occurring twist of solid wood
- Black acoustical infill panels hide the plenum for a clean, finished install visual and provide Total Acoustics® Performance with NRC up to .85 and CAC up to 35
- Coordinating solid wood trims in 4" and 6" depths
- Integrated downlighting solutions from USAI® Lighting are certified for fit and finish

WoodWorks Grille – Forté



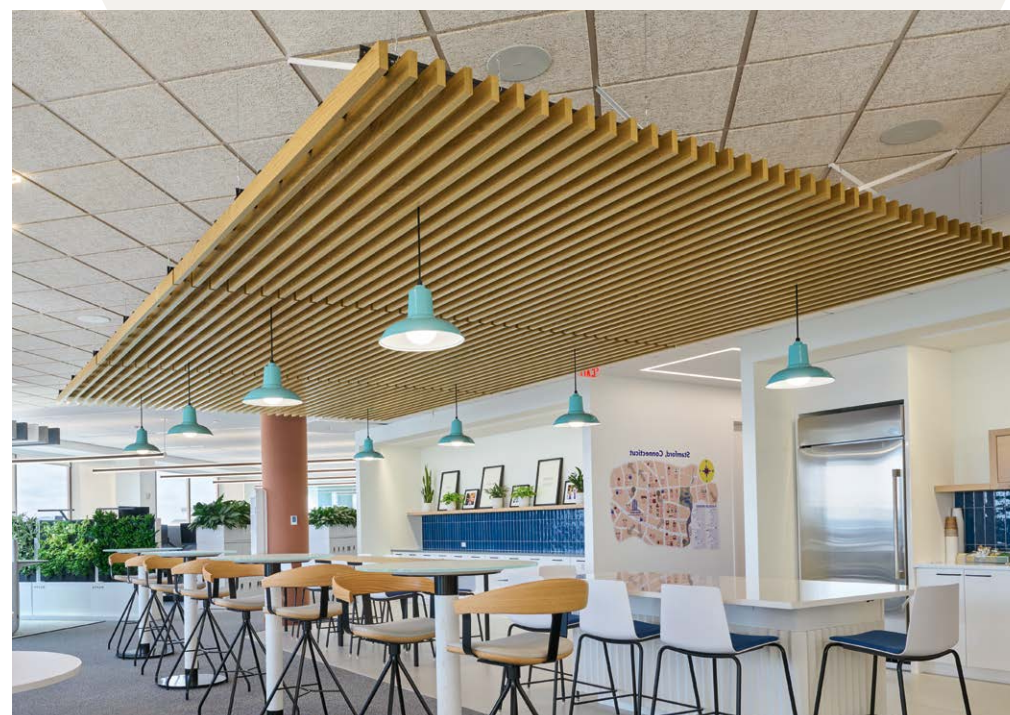
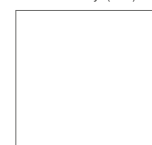
WOODWORKS Grille – Classics

Solid Wood Backer, Dowel, and Backer & Dowel Combination

Warm, natural wood ceilings in more finish options.

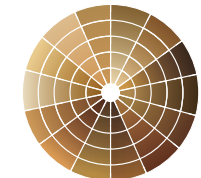
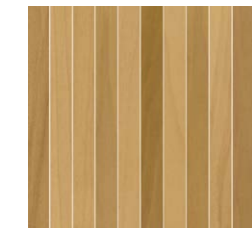
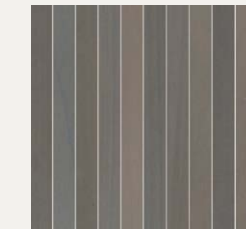
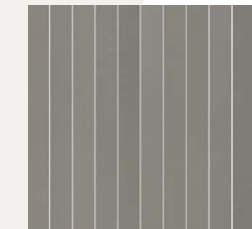
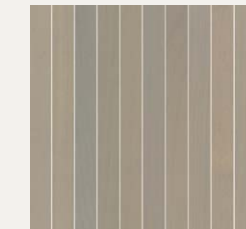
- 10 new standard finishes available in addition to legacy finishes
- Coordinating solid wood trims in 4" and 6" depths
- Select products included in the FAST134 program – ready to ship in 4 weeks or less
- Easy lighting integration, lighting solutions certified for fit and finish
- Installation with dowel, flat backer, or backer and dowel combination

LEGACY FINISHES



WoodWorks Grille – Classics, Tectum® Regular

FINISH RANGES ON SOLID POPLAR



MetalWorks Mesh Torsion Spring, 1Cell woven panels



METALWORKS™ Mesh Torsion Spring

MetalWorks™ Mesh Torsion Spring panels offer an industrial look with minimized grid visibility and 100% swing-down accessibility.

- Popular Torsion Spring installation method now standard in 24" x 24" and 24" x 48" in 1Cell and 2Cell woven patterns
- Slotted grid Torsion Spring installation minimizes grid visibility by hiding the grid above the panel face
- Both woven patterns offer over 75% open area, enabling sprinklers to be installed above the panel face, minimizing disruption of the ceiling plane with MEP
- CleanAssure™ family of products – includes disinfectable panels, suspension systems, and trim
- Black acoustical infill panels provide high sound absorption and help conceal elements in the plenum

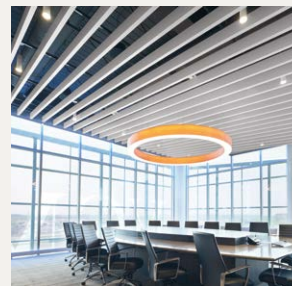
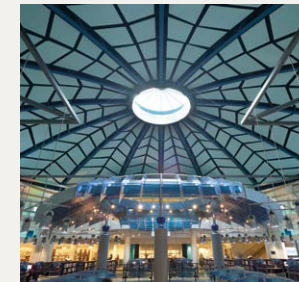
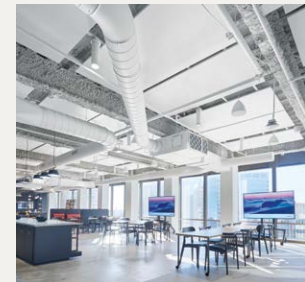
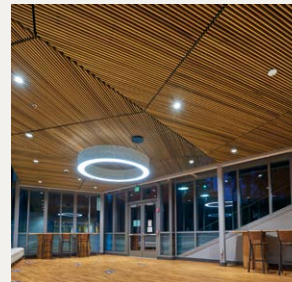
FAST134

Get what you need, FAST! Specialty ceiling and wall products ship in four weeks or less.

- Options for most budgets
- Standard sizes and colors mean no shop drawings or submittal sample approvals
- Products updated weekly



lead with speed





Declare™ is a trademark of the International Living Future Institute®; UL® is a trademark of UL LLC
H.E. Williams logo is a registered trademark of H.E. Williams, Inc. USAI® is a registered trademark
of USAI, LLC; VidaShield UV24 is the property of Medical Illumination International, Inc.
all other trademarks used herein are the property of AWI Licensing LLC and/or its affiliates
© 2022 AWI Licensing LLC • Printed in the United States of America

armstrongceilings.com/commercial

Cover Photo:
WoodWorks® Grille – Forté 3/4" W x 4-1/4" H
with 3 slats in 48", 72", and 96" lengths in
Natural Walnut finish

Armstrong®
CEILING & WALL SOLUTIONS