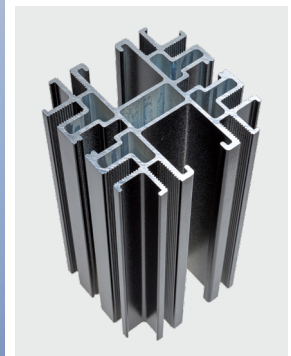


COOL SHIELD™ Structure

Floor-Mounted Aisle Containment System



Cool Shield™ Structure



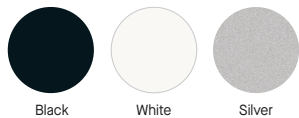
4" × 4" Extrusion

Heavy-duty, floor-mounted structural system designed to support critical infrastructure including cable trays, busbars, liquid cooling and more. Cool Shield™ Structure is more than just an effective aisle containment system, it is a support structure for all of your server cabinet infrastructure.

KEY SELECTION ATTRIBUTES

- 4" × 4" vertical post design features two channels to accept standard P1000/1001 strut arms for busbar, cable trays or liquid cooling piping support
- Double channel design allows for strut arm placement both inside and outside the hot aisle
- Unlimited configurability allows for systems to be customized for your unique application
- Continuous strut channels allow for easy leveling of support arms if floors are not level
- This product can be adjusted to comply with Build America, Buy America (BABA) requirements. Modifications to pricing and lead times may apply. Contact your local sales representative for additional information
- Flexibility in vertical post and horizontal arm space enables the system to be optimized for specific load requirements
- Optional vertical post channel insert for reinforcement at arm attachment points for increased strength and load capacity
- Ability to modify or add support arms after installation without drilling or metal shavings
- Extrusion profile accepts frame filler panels, vertical panels, and sliding panels
- Lightweight aluminum-based system installs easily while maintaining strength and support
- Optional offsite pre-assembly of framing components for shorter onsite installation
- Ideal for large, rapidly scaling operations with phased expansion needs

COLORS Due to printing limitations, shade may vary from actual product.

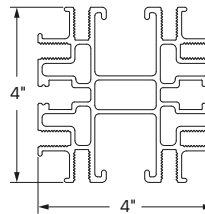


Black

White

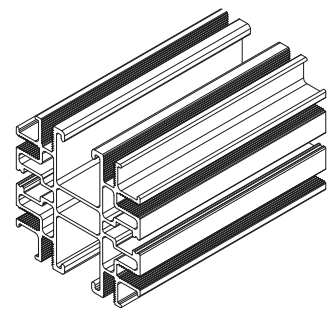
Silver

DETAILS



4" × 4" Vertical Post

NOTE: Custom lengths from 6" – 21'

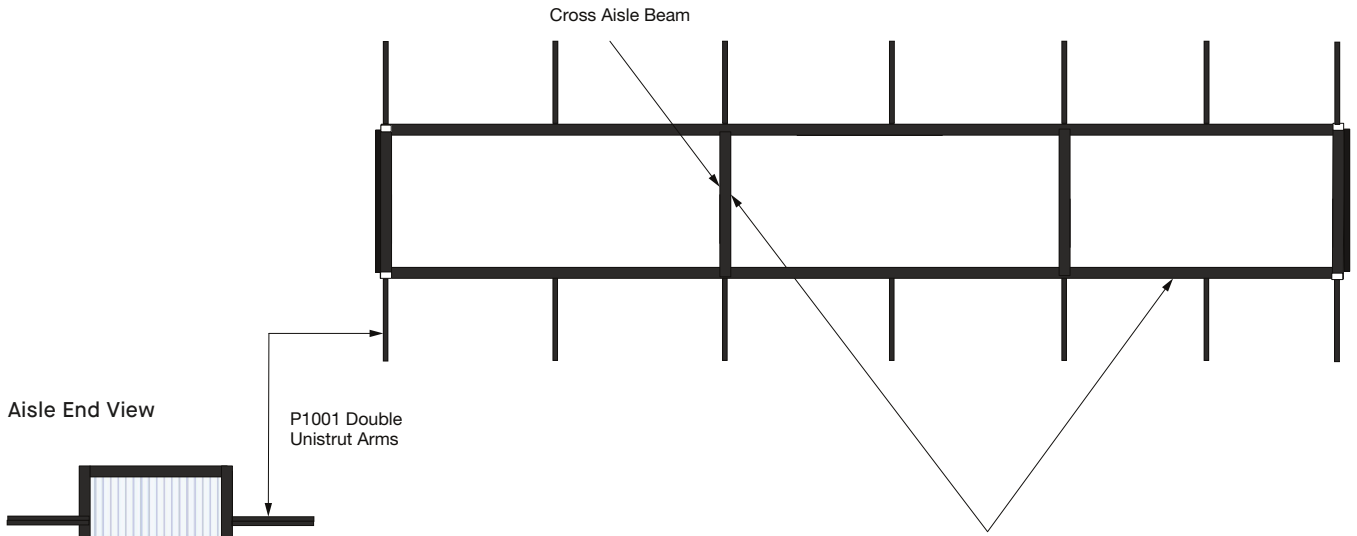


COOL SHIELD™ Structure

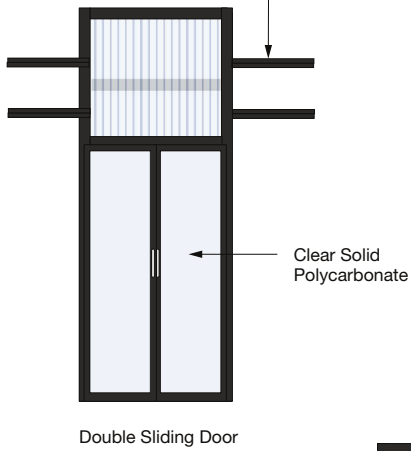
Floor-Mounted Aisle Containment System

STRUCTURE CONFIGURATION EXAMPLE

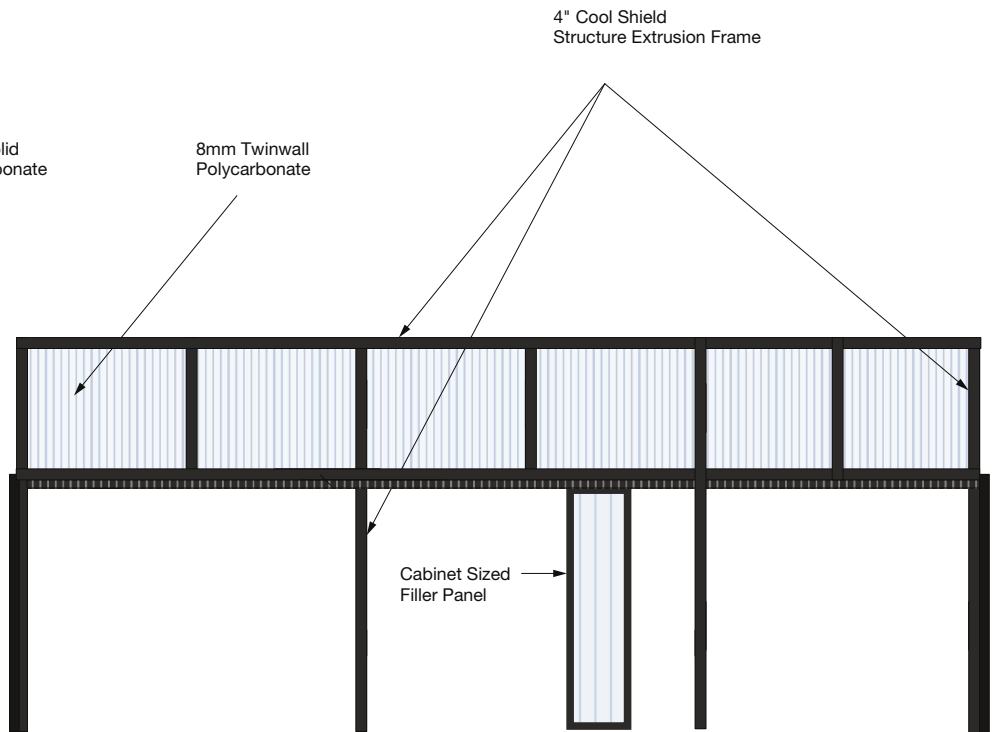
Top View



Aisle End View



Elevation View



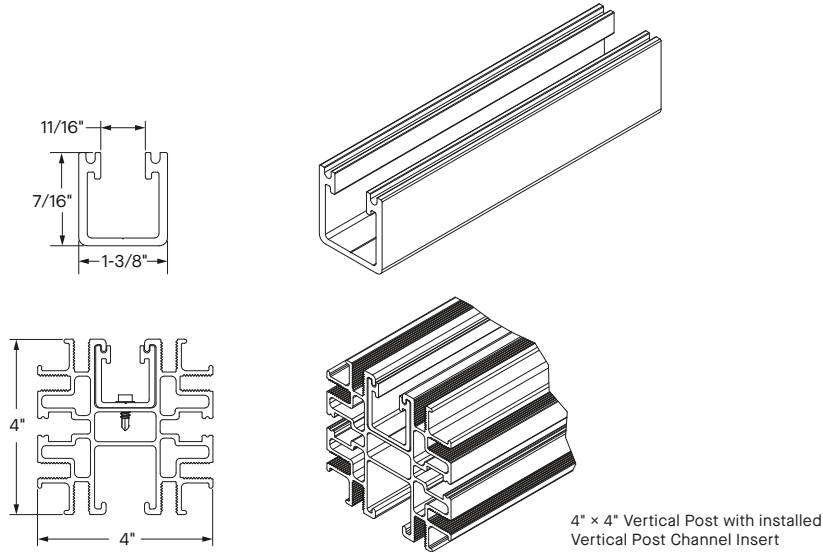
COOL SHIELD™ Structure

Floor-Mounted Aisle Containment System

ADDITIONAL ARM LOAD SUPPORT OPTIONS

VERTICAL POST CHANNEL INSERT

Vertical post channel insert (VPCI) provides reinforcement at strut arm connection points for additional strength and load capacity. The VPCI can be used in one or both strut channels in 4" x 4" vertical post.



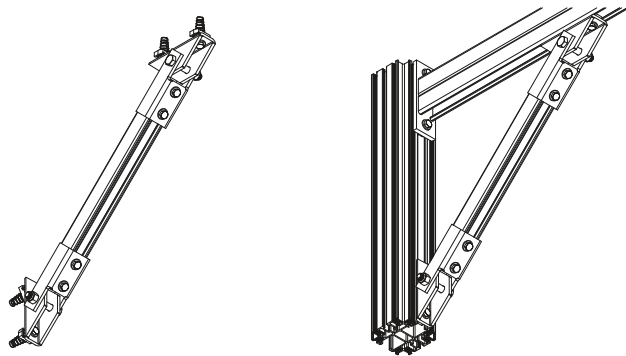
Material
2" x 2" 6063-T6 Aluminum

Mill finish
Factory assembled

Maintains continuous strut channel for easy leveling of support arms if floors are not level

STRUT ARM BRACE

The Strut Arm Brace (SAB) is an arm load support brace installed under or over the strut arms to provide additional strength and load capacity.



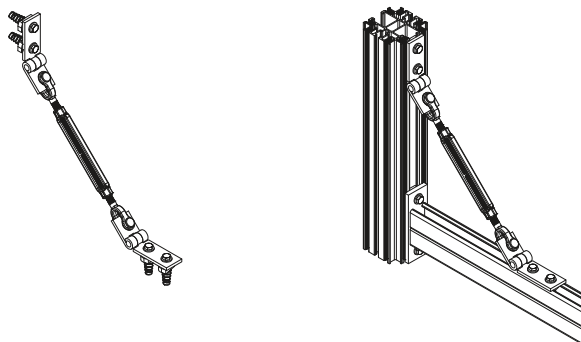
Material
Steel

Dimensions
12"

Includes
2 brackets, 1 unistrut channel arm, and channel nuts and bolts

TURNBUCKLE ARM BRACE

The Turnbuckle Arm Brace (TAB) is an arm load support brace installed over the strut arms to provide additional strength and load capacity.



Material
Steel

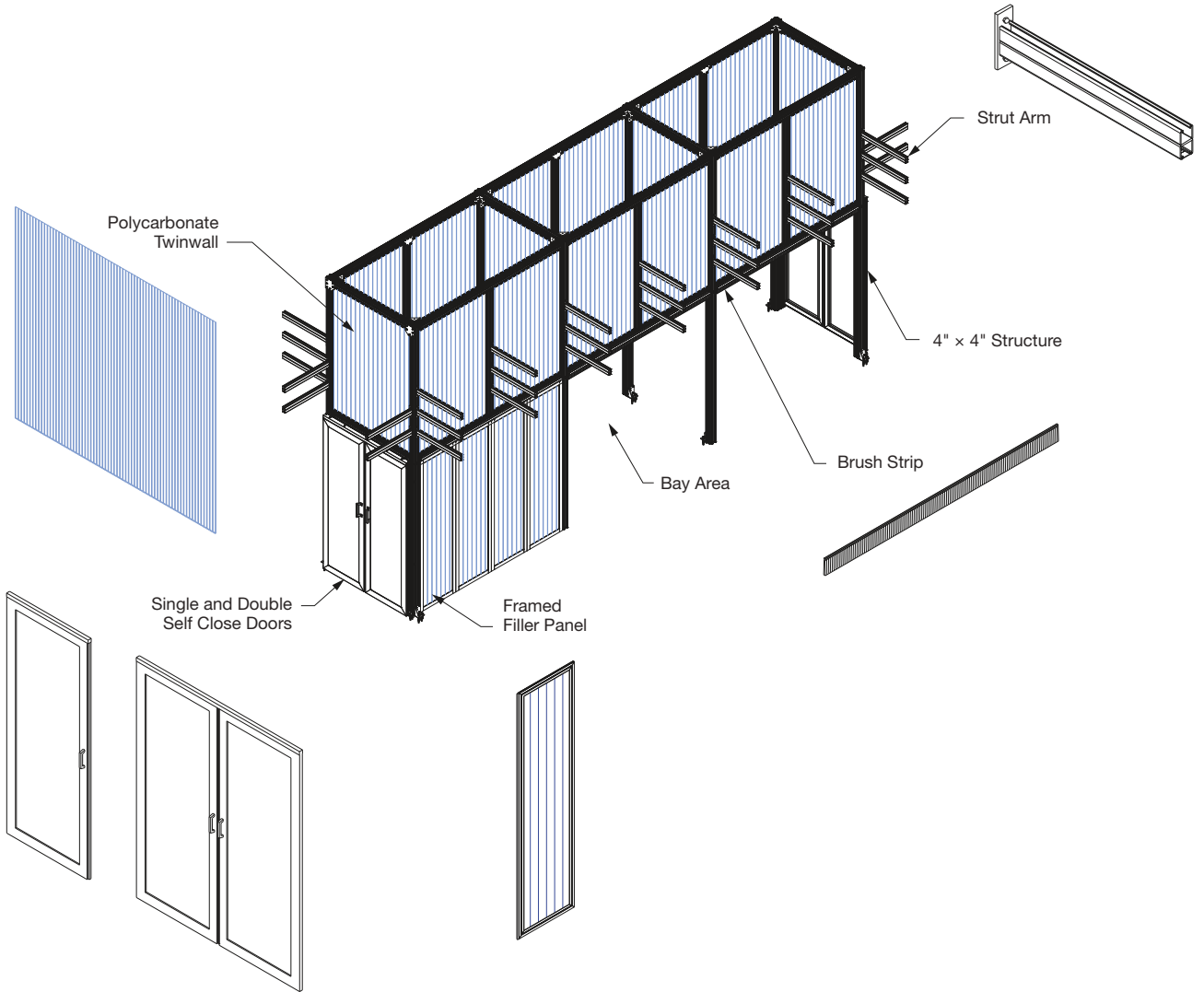
Dimensions
Extendable installation length – minimum 14", maximum 20"

Includes
2 brackets, 1 turnbuckle/clevis/pin assembly, and channel nuts and bolts

COOL SHIELD™ Structure

Floor-Mounted Aisle Containment System

ADDITIONAL STRUCTURE COMPONENTS



PHYSICAL DATA

Material
6063-T6 Aluminum
Surface Finish
Powder-coated

Profile Dimensions
4" x 4"
Warranty
Details at armstrongceilings.com/warranty
For inquiries, contact ISQuote@armstrong.com

TechLine / 877 276-7876
armstrong.com/coolshield
BPCS-7510-426

LEED® is a registered trademark of the U.S. Green Building Council; all other trademarks used herein are the property of AWI Licensing LLC and/or its affiliates © 2026 AWI Licensing LLC

Armstrong®
World Industries