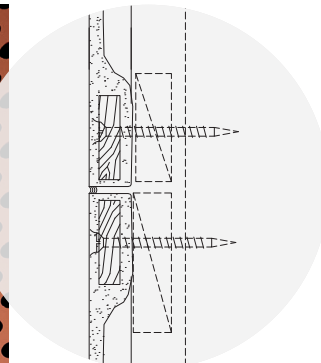
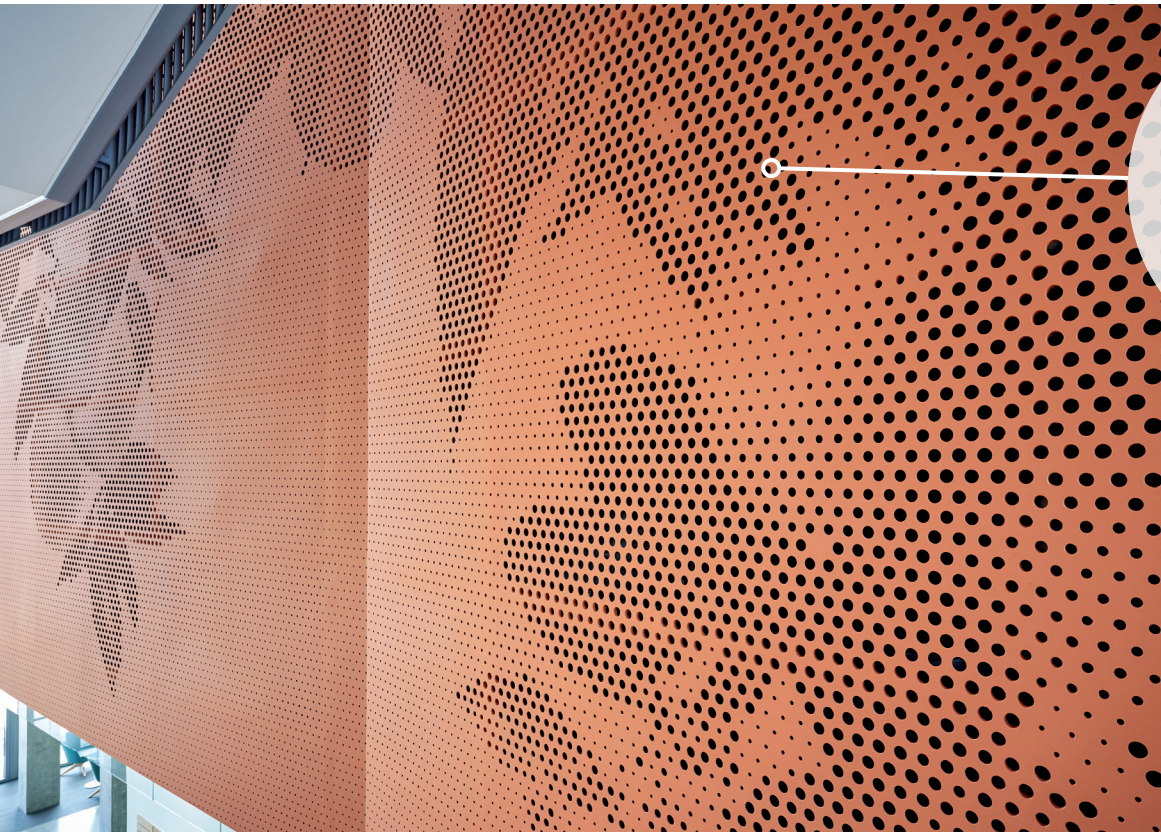


# CASTWORKS™ Walls

Glass Fiber Reinforced Gypsum (GRG/GFRG)  
architectural forms



CastWorks GRG perforated wall panels with a biophilic design



[armstrongceilings.com/capabilities](http://armstrongceilings.com/capabilities)  
See more photos at:  
[armstrongceilings.com/photogallery](http://armstrongceilings.com/photogallery)

CastWorks™ GRG (glass fiber reinforced gypsum) walls are an ideal interior application for compound curves, angled walls, and unique dimensional or perforated designs.

## KEY SELECTION ATTRIBUTES

- Panels typically 4' × 6' in size
- Cast into any shape or compound curve
- Perforations available — install with FeltWorks® Acoustical Panels for up to 0.65 NRC
- Weighs only 2-3 lbs. per square foot
- Easy to install with drywall screws
- Low maintenance
- Density can be increased to accommodate acoustic needs
- Sets fast; can reduce construction schedules
- Durable
- Interior use
- Requires field taping and finishing, including priming and painting
- Replicate the look of natural materials at a lower cost

## COLORS



Paint Grade  
(Unfinished for field painting)



Field Finish to  
Your Desired Color



# CASTWORKS™ Walls

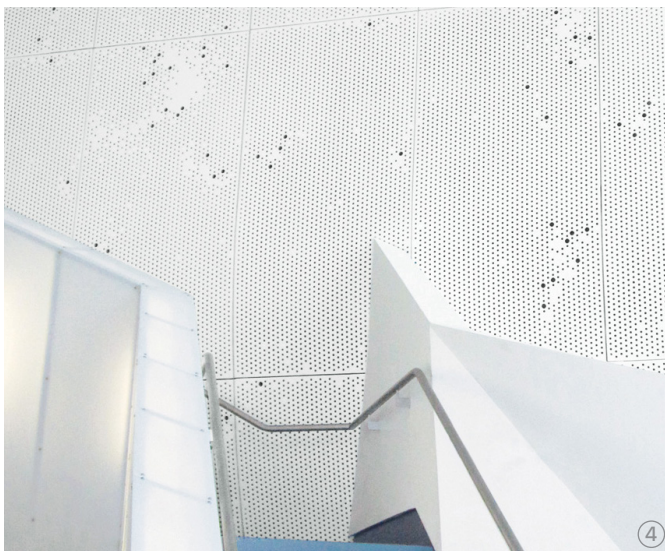
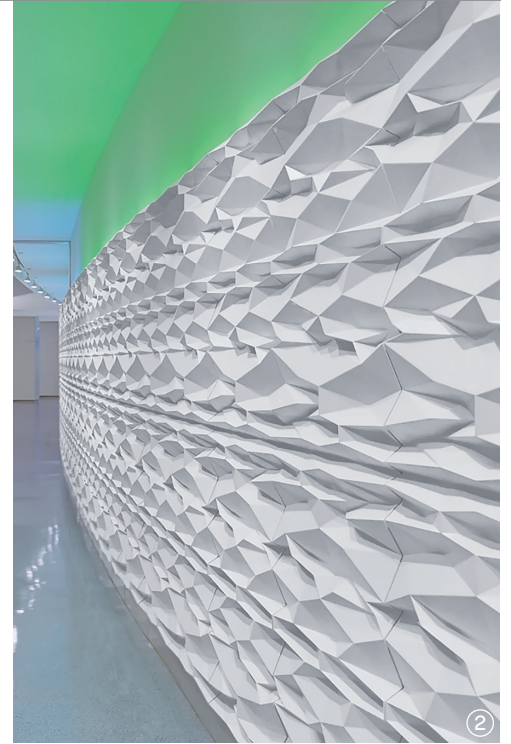
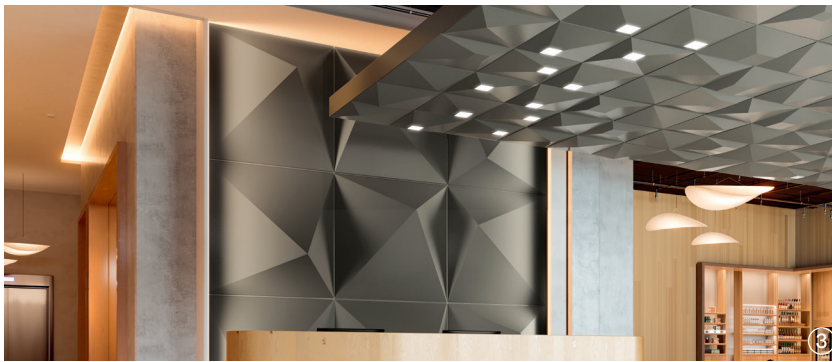
## Glass Fiber Reinforced Gypsum (GRG/GFRG) architectural forms

LEED® WELL™ LBC

energy management	✓	regional materials	✓	EPD	✓	recyclable/producer resp.		biobased materials		sourcing of raw materials		material ingredient reporting	✓	low emitting materials	✓	lighting quality	✓	acoustics	✓
construction waste mgmt		design for flexibility						recycled content											

LOCATION DEPENDENT

WITH INFILL PANEL



1. CastWorks™ ceiling-to-wall transition with integrated light covers
2. CastWorks faceted, curved wall
3. CastWorks dimensional wall panels
4. CastWorks perforated wall panels
5. CastWorks wrap-around wall panel system

### PHYSICAL DATA

**Material**  
Glass Fiber Reinforced Gypsum (GRG/GFRG) is a composite consisting of gypsum cement and water, reinforced with glass fibers.

**Surface Finish**  
Standard unfinished, paint grade. Can be coated to achieve any desired color and texture.

**Fire Performance**  
Class A Fire Performance per ASTM E84.

**Design Considerations**  
Backlighting behind a perforated CastWorks panel is not recommended.

**Installation Considerations**  
Install CastWorks GRG parts as indicated on approved shop drawings, other recommendations, and the contract requirements. Comply with ASTM Standard C1467 for the installation of GRG.

**Application Considerations**  
Use caution and wear appropriate hand, eye, and dust mask protection when handling CastWorks GRG. Refer to installation instructions for complete details.

**Application Considerations**  
In addition to decorative purposes, CastWorks GRG can be used for lighting and acoustic purposes. Its standard thickness is 3/16", but can be customized to 1/2" or 3/4" to achieve a desired reverberation.

**Design & Pre-Construction Service**  
For complimentary design and pre-construction assistance, contact ProjectWorks® at [armstrongceilings.com/projectworks](http://armstrongceilings.com/projectworks)

**Warranty**  
One (1) Year Limited Warranty. Details at [armstrongceilings.com/warranty](http://armstrongceilings.com/warranty)

**Weight**  
2-3 LBS/SF (may vary depending on part design)