

TECTUM® DesignArt™ – Shapes

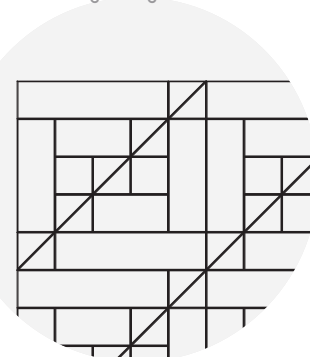
Direct-Attach Ceiling Panels
coarse texture



SUSTAIN®
High Performance
Sustainable
Ceiling Systems

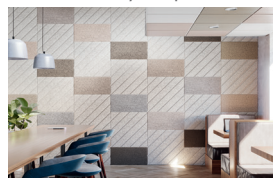


CAD/Revit® drawings at:
armstrongceilings.com/cadrevit



Visit our online pattern gallery at:
armstrongceilings.com/patterngallery

Mix and match Shapes and
Lines for a truly unique visual!



Tectum DesignArt - Shapes Direct-Attach ceiling panels pattern TDSH-0002 in Bronzite and Basalt

armstrongceilings.com/designart

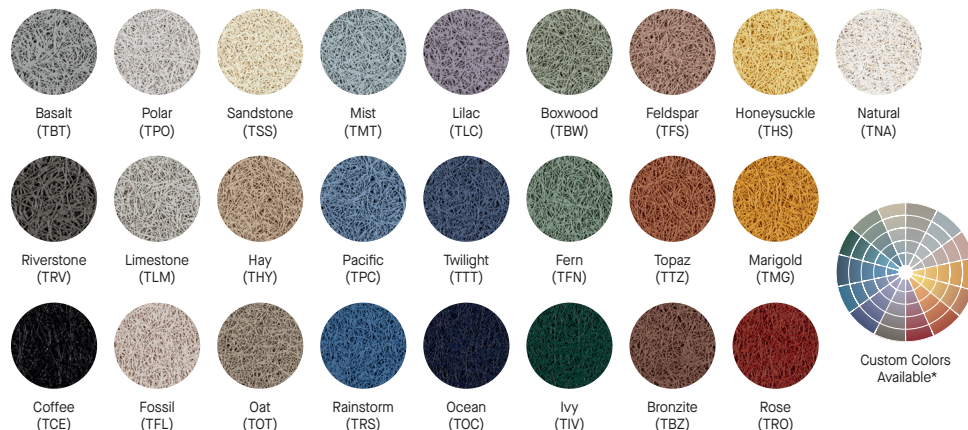
Transform interior spaces by combining texture, shapes, patterns, and colors with sustainable, acoustical Tectum® DesignArt™ – Shapes Direct-Attach Ceiling Panels.

KEY SELECTION ATTRIBUTES

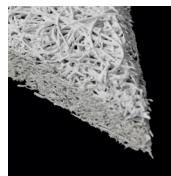
- 30 standard Shapes direct-attach ceiling panels available in 24 new standard colors, and Natural
- Products in the Tectum DesignArt portfolio are made to work together
- Available for ceiling and wall applications
- Tectum DesignArt – Shapes panels have UL® Certified acoustics with testing and reporting that align with industry-wide best practices
- Great retrofit solution for noise reduction
- Excellent sound absorption – NRC up to 0.85 (1" panel, C-40 Mounting)
- CleanAssure™ family of products – includes disinfectable panels, suspension systems, and trim (standard colors only)
- **new** Sustainable Beyond Standard: Custom sizes in 1" thickness and all standard panels are part of the Sustain® portfolio, and meet the most stringent industry sustainability compliance standards today
- All edges are beveled and painted
- Touch up paint for standard colors available

- Panels can be mechanically fastened to a wide variety of surfaces including masonry, drywall, drywall grid system, wood, and more
- USDA Biobased content: 98%

COLORS Due to printing limitations, shade may vary from actual product.



DETAIL



Tectum DesignArt - Shapes Direct-Attach panel in Polar. Edges are beveled and painted

* Colors that are pre-qualified to meet Sustain portfolio requirements are available upon request. Other made-to-order colors must be evaluated if sustainability criteria is required. Lead time will increase.

TECTUM® DesignArt™ – Shapes

Direct-Attach Ceiling Panels
coarse texture

USDA
**CERTIFIED
BIOBASED
PRODUCT**
PRODUCT 98%



Declare.

LEED® WELL | LBC

| | | | | | | | | | | | | | |
|-------------------|--------------------------|--------------------|------------------------|-----|------------------------------------|---------------------|-----------------|------------------|---------------------------|-------------------------------|------------------------|------------------|-----------|
| energy management | construction waste mgmt. | regional materials | design for flexibility | EPD | recyclable/extended producer resp. | bio-based materials | FSC® (for wood) | recycled content | sourcing of raw materials | material ingredient reporting | low emitting materials | lighting quality | acoustics |
| ✓ | ✓ | ✓ | ✓ | ✓ | ✓ | ✓ | ✓ | ✓ | ✓ | ✓ | ✓ | ✓ | ✓ |

For LEED contribution contact TechLine

LOCATION DEPENDENT

VISUAL SELECTION

| | Item No. | Dimensions W x L x H (Inches) |
|--|-----------|-------------------------------|
| TECTUM® DesignArt™ – Shapes Beveled Edges | See below | See below |

PERFORMANCE

Dots represent high level of performance.

| Fire Rating | Bio-Block Anti-Mold/ Mildew | Humi-Guard+ Sag Resist | CleanAssure™ Disinfectable Panels | DURABILITY Impact | 30-Yr Warranty |
|-------------|-----------------------------------|---------------------------|--------------------------------------|----------------------|----------------|
| Class A | * | * | Fog | * | * |

ACOUSTICAL INFORMATION

| Panel Thickness | UL Classified Acoustics NRC | Mounting Method |
|-----------------|--------------------------------|-----------------|
| 1" | 0.40 | A |
| | 0.45 | D-20 |
| | 0.80 | C-20 |
| | 0.85 | C-40 |

30° SHAPES

| Isosceles Triangles Nominal Dimensions | Item No. ◆ | Description |
|---|----------------|--------------------|
| | 5420T11T10 ___ | Isosceles Triangle |
| | 5420T12T10 ___ | Isosceles Triangle |

45° SHAPES

| Right Triangles Nominal Dimensions | Item No. | Description |
|---------------------------------------|----------------|---------------------|
| | 5420T01T10 ___ | Right Triangle |
| | 5420T02T10 ___ | Right Triangle |
| Parallelograms Nominal Dimensions | | |
| | 5420P01T10 ___ | Right Parallelogram |
| | 5420P02T10 ___ | Right Parallelogram |
| | 5420P03T10 ___ | Left Parallelogram |
| | 5420P04T10 ___ | Left Parallelogram |

◆ When specifying or ordering, include the appropriate 3-digit color suffix TNA = Natural; TPO = Polar (e.g. 5420R01T10 I P Q). Consult installation instructions for fastener guidance.

MORE ITEMS ▶

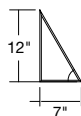
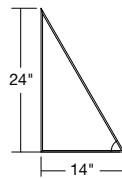
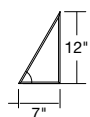
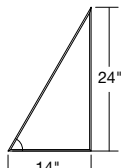
DIRECT-TO-STRUCTURE – Standard

TECTUM® DesignArt™ – Shapes

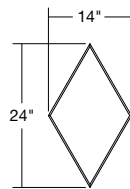
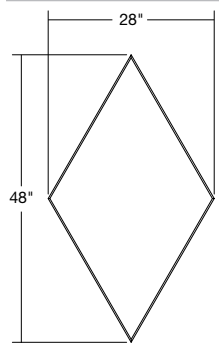
Direct-Attach Ceiling Panels
coarse texture

60° SHAPES

Right Triangles

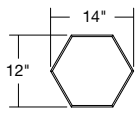
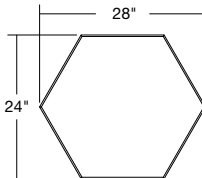
| Nominal Dimensions | Item No. ♦ | Description |
|--|---------------|------------------------|
|  | 542T05T10 ___ | Right Triangle – Right |
|  | 542T06T10 ___ | Right Triangle – Right |
|  | 542T07T10 ___ | Right Triangle – Left |
|  | 542T08T10 ___ | Right Triangle – Left |

Parallelograms

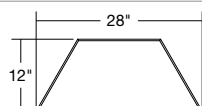
| Nominal Dimensions | Item No. ♦ | Description |
|---|---------------|---------------|
|  | 542P05T10 ___ | Parallelogram |
|  | 542P06T10 ___ | Parallelogram |

60° SHAPES

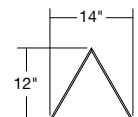
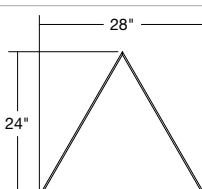
Hexagons

| Nominal Dimensions | Item No. ♦ | Description |
|--|---------------|-------------|
|  | 542H01T10 ___ | Hexagon |
|  | 542H02T10 ___ | Hexagon |

Trapezoids

| Nominal Dimensions | Item No. ♦ | Description |
|--|---------------|-------------|
|  | 542Z01T10 ___ | Trapezoid |
|  | 542Z02T10 ___ | Trapezoid |

Equilateral Triangles

| Nominal Dimensions | Item No. ♦ | Description |
|--|---------------|----------------------|
|  | 542T03T10 ___ | Equilateral Triangle |
|  | 542T04T10 ___ | Equilateral Triangle |

♦ When specifying or ordering, include the appropriate 3-digit color suffix TNA = Natural; TPO = Polar (e.g. 542R01T10 I.P.Q.). Consult installation instructions for fastener guidance.

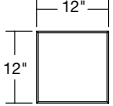
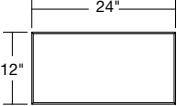
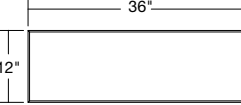
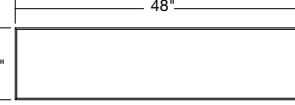
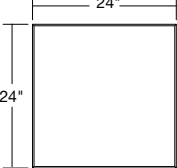
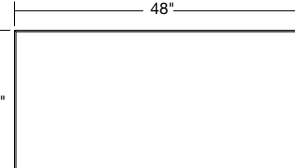
[MORE ITEMS ►](#)

TECTUM® DesignArt™ – Shapes

Direct-Attach Ceiling Panels
coarse texture

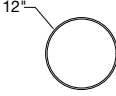
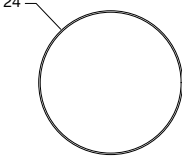
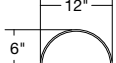
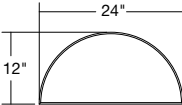
90° SHAPES

Squares & Rectangles

| Nominal Dimensions | Item No. ♦ | Description |
|---|------------------|-------------|
|  | 542OR01T10 _ _ _ | Square |
|  | 542OR02T10 _ _ _ | Rectangle |
|  | 542OR03T10 _ _ _ | Rectangle |
|  | 542OR04T10 _ _ _ | Rectangle |
|  | 542OR05T10 _ _ _ | Square |
|  | 542OR06T10 _ _ _ | Rectangle |

360° SHAPES

Circles

| Nominal Dimensions | Item No. ♦ | Description |
|--|------------------|-------------|
|  | 542OC01T10 _ _ _ | Circle |
|  | 542OC02T10 _ _ _ | Circle |
|  | 542OC03T10 _ _ _ | Semicircle |
|  | 542OC04T10 _ _ _ | Semicircle |

♦ When specifying or ordering, include the appropriate 3-digit color suffix TNA = Natural; TPO = Polar (e.g. 542OR01T10 I P Q) Consult installation instructions for fastener guidance.

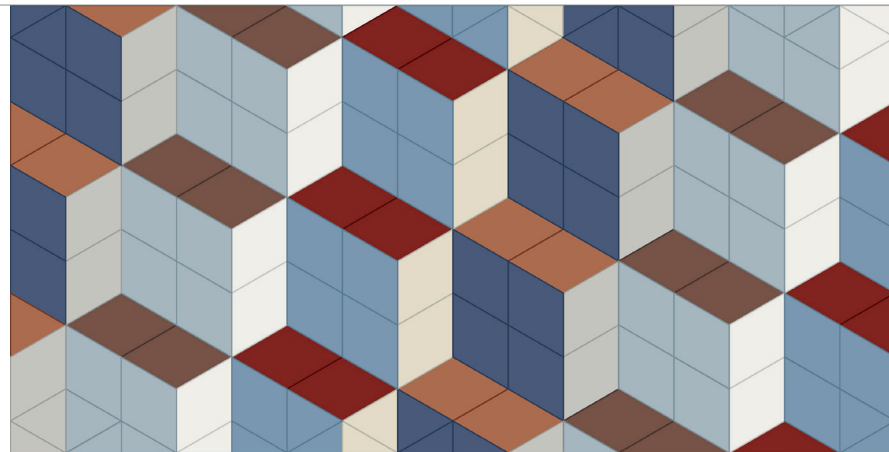


DIRECT-TO-STRUCTURE – Standard

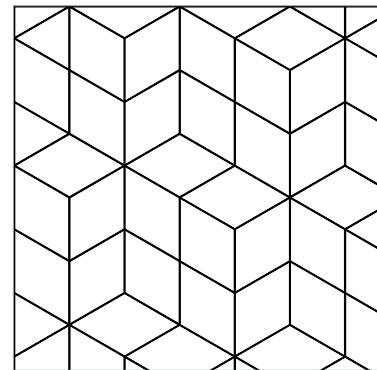
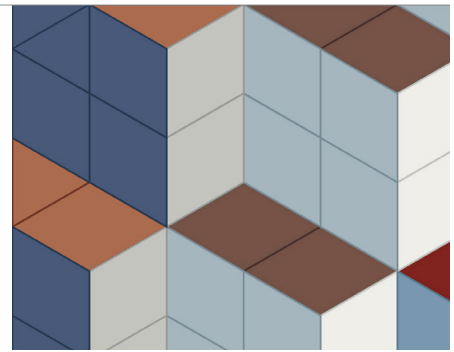
TECTUM® DesignArt™ – Shapes

Direct-Attach Ceiling Panels

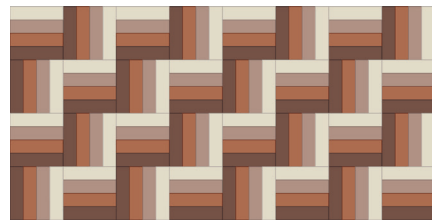
coarse texture



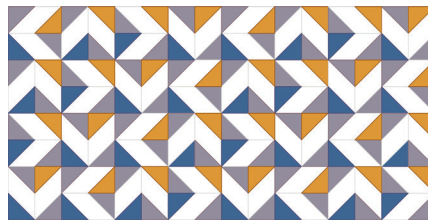
Tectum® DesignArt™ – Shapes, pattern TDSH-0006



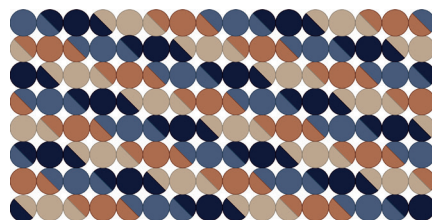
Tectum DesignArt – Shapes, pattern TDSH-0006



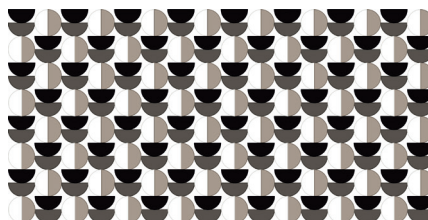
Tectum DesignArt – Shapes, pattern TDSH-0001



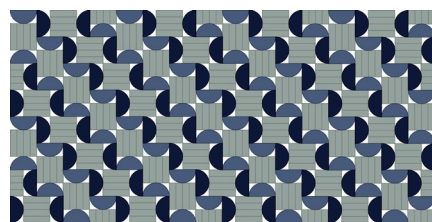
Tectum DesignArt – Shapes, pattern TDSH-0004



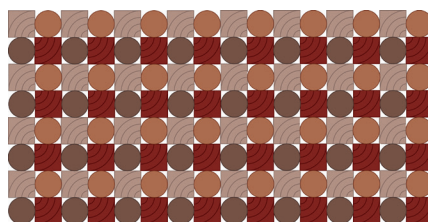
Tectum DesignArt – Shapes, pattern TDSH-0009



Tectum DesignArt – Shapes, pattern TDSH-0011



Tectum DesignArt – Shapes and Tectum DesignArt – Lines, Pattern TDSL-0001



Tectum DesignArt – Shapes and Tectum DesignArt – Lines, Pattern TDSL-0002

Visit our online pattern gallery at armstrongceilings.com/patterngallery. Use our recommended colors, or choose from 24 standard colors, in addition to Natural to create your own one-of-a-kind pattern!

TECTUM® DesignArt™ – Shapes

Direct-Attach Ceiling Panels

coarse texture

ACCESSORIES

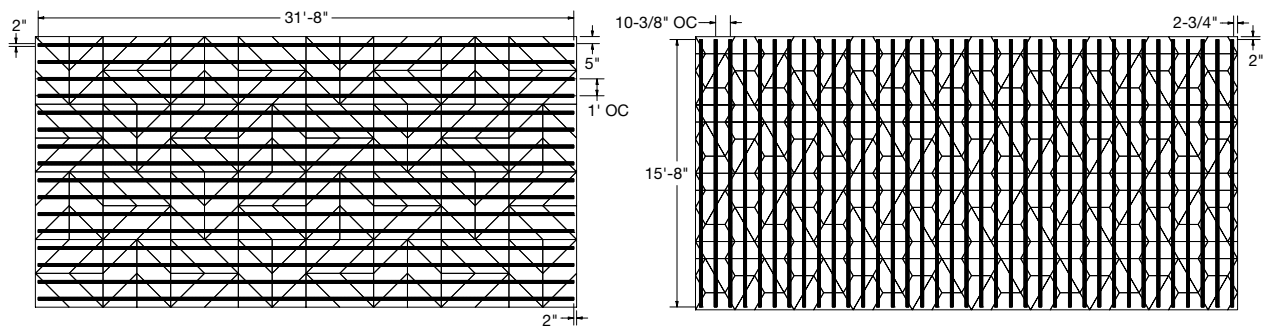
| Item No. ◆ | Description | Quantity |
|----------------|---|----------|
| 5456GAL1 _ _ _ | Touch up paint | 1 gallon |
| 8187L16TWH† | #6 × 1-5/8" Painted Head – Sharp point Screws | 1000/ctn |
| 8188L16TWH† | #6 × 1-5/8" Painted Head – Drill point Screws | 1000/ctn |
| 8189L22TWH | 2-1/4" Painted Head – CMU Screws | 500/ctn |
| 8189L22TNA | 2-1/4" Painted Head – CMU Screws | 500/ctn |

◆ When specifying or ordering, include the appropriate 3-digit color suffix TNA = Natural; TPO = Polar (e.g. 5456GAL1 I P Q). Consult installation instructions for fastener guidance.

† Touch up paint is available to paint screw heads in field if desired or specified.

NOTE: Projects may require alternative screw lengths and types depending on site conditions. Please consult installation instructions for guidance.

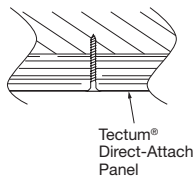
FURRING STRIP LAYOUT



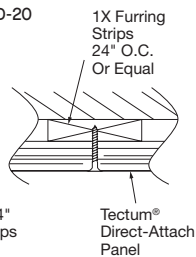
Furring strip spacing will vary depending on the scale of the shapes. Furring strip layouts are included on the Bill of Materials in our online pattern gallery at armstrongceilings.com/patterngallery.

ACOUSTICAL MOUNTING METHODS

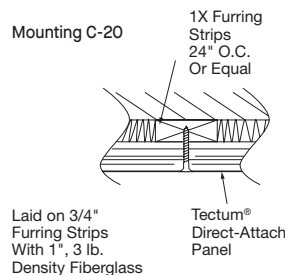
Mounting A



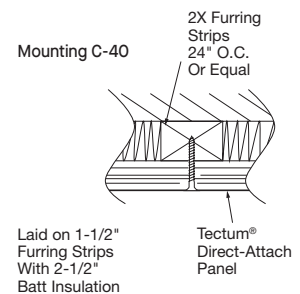
Mounting D-20



Mounting C-20



Mounting C-40



Patterns can be installed with adjacent panel edges touching, or with negative space between panels where the walls substrate is visible. Furring installation enhances acoustics, but is not recommended for discontinuous patterns, such as those with a circle shape.

PHYSICAL DATA

Material

Cementitious Wood Fiber; FSC® certified. For more information about FSC-certified fire-retardant products, or to view our FSC certification letter, contact TechLine at 1 877 276-7876.

Surface Finish

Factory-applied latex paint on abuse-resistant silicate surface coating. Natural finish is unpainted but, after coating is applied, panels may appear light in color.

Panels are painted on the edge, however due to fibrous texture of panels, certain angles and lighting conditions will make edge appear less or more painted.

Can be field painted up to 6 times without impacting acoustic or fire performance. See installation instructions for details on paint and application method.

Fire Performance

Class A. Flame Spread Index 25 or less and Smoke Developed Index 50 or less when tested in accordance with ASTM E84.

CAN/ULC S102 surface burning characteristics. Flame Spread Index of 25 or less and Smoke Developed Index of 50 or less (painted, face only).

VOC Emissions

Third-party certified compliant with California Department of Public Health CDPH/EHLB/Standard Method Version 1.2, 2017. This standard is the guideline for low emissions in LEED®, WELL Building Standard®, CalGreen Title 24, ANSI/ASHRAE/USGBC/IES Standard 189; ANSI/GBI Green Building Assessment Protocol.

Humidity/Sag Resistance

HumiGuard® Plus performance panels are recommended for areas subject to high humidity, up to, but not including, standing water and outdoor applications.

Anti-Mold/Mildew

Ceiling panels with BioBlock® performance resist the growth of mold and mildew on the panel surface.

Installation Considerations

Panels must be mechanically attached to approved substrate per installation instructions.

Use caution and wear appropriate hand, eye, and dust mask protection when cutting and installing Tectum ceiling panels. Refer to installation instructions for complete details and cutting recommendations.

Primary (Embodied) Energy

See all LCA information on our EPDs.

Design Considerations

Color variation among panels is common due to the natural characteristics of the wood on White and Natural panels.

Wood fibers may appear orange on natural-colored panels due to the characteristics of the wood.

Physical product samples for standard and custom colors are available upon request. Please refer to the physical product sample prior to making a final selection. While we strive to ensure exact color matches, various factors such as differences in materials, texture, substrate porosity, painting processes, lighting, and observer subjectivity can all affect how paint colors appear on ceiling and wall panels, suspension systems, and trim products. Due to these and other differences, ceiling and wall panels, trim products, and suspension systems with the same color name will coordinate but may not be an exact color match. Product is dye-lotted. Order sufficient initial quantities and attic stock to minimize possible color variation.

Seismic Restraint

Tectum Direct-Attach ceiling panels are approved for application in all seismic areas when installed per the seismic guidelines in the Armstrong Ceiling and Wall Installation Instructions.

Cleaning and Disinfecting

Cleaning and CDC-approved disinfecting options available on armstrongceilings.com/cleaning

Warranty

30-Year Warranty. Details at armstrongceilings.com/warranty

Weights and Sold By

1" – 1.65 lbs/SF

Panels sold by the piece. Other accessory elements quantities noted above.

