

WOODWORKS® Concealed

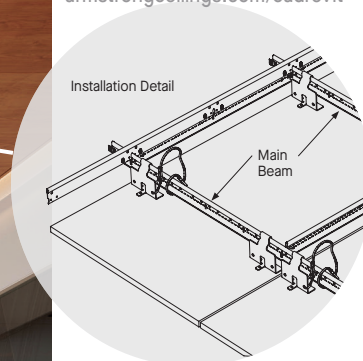
Concealed Suspension



FAST 134
Select Items Ship Fast
armstrongceilings.com/fast134



CAD/Revit® drawings at:
armstrongceilings.com/cadrevit



WoodWorks® Concealed 24" x 96" panels with W2 perforation in Plain Slice Cherry

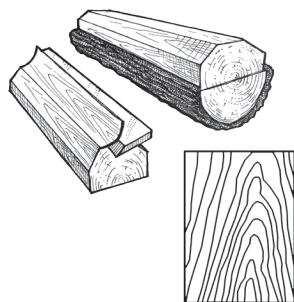
This easy-to-install ceiling with a concealed suspension offers a continuous, monolithic visual.

KEY SELECTION ATTRIBUTES

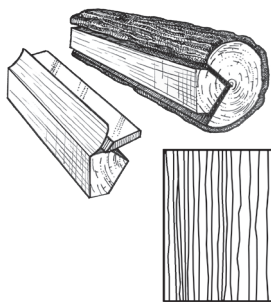
- new • Standard veneers feature various species and cuts for beautiful wood visuals
- ASTM E84 Class A Fire Performance
- The natural warmth of wood can contribute to biophilic designs and building certification standards like the WELL™ v2 "Nature and Place" feature
- Acoustical fleece for increased sound absorption
- Select products included in the FAST134 program – ready to ship in 4 weeks or less
- Hook-on panels (for standard 15/16" suspension system) provide safe and secure downward accessibility
- Shorter lead times and lower cost than custom millwork
- Factory edgebanded for superior quality
- Complete standard system from one manufacturer including panels, suspension system, clips, and trim
- CleanAssure™ family of products – includes disinfectable panels, suspension systems, and trim
- new • FSC® certified wood available as a premium quoted option
- USDA Biobased content: 100%

VENEER CUTS

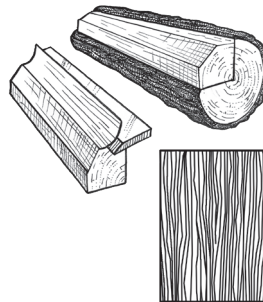
Different cuts of a log will yield different graining visuals. Choose your veneer to achieve your desired look.



Plain Sliced
Produces the well known cathedral or loop-grain effect.



Quarter Sliced
Produces a striped, often straight-grain effect.



Rift Sliced
Produces a tight, linear grain along the entire length of the veneer.

WOODWORKS® Concealed

Concealed Suspension

USDA
CERTIFIED
BIOBASED
PRODUCT
PRODUCT 100%

LEED® WELL | LBC

80% RECYCLED CONTENT

For LEED contribution contact TechLine

energy management	construction waste mgmt.	regional materials	design for flexibility	EPD	recyclable/extended producer resp.	biobased materials	FSC® (for wood)	recycled content	sourcing of materials	material ingredient reporting	low emitting materials	lighting quality	acoustics
LOCATION DEPENDENT				PREMIUM OPTION			WITH INFILL PANEL						

FINISH RANGES

The carefully curated species and veneer cuts offer a beautiful natural variation. The images here reflect the visual range that is likely within our product. Darkest to lightest tones may occur within an installation due to the character of wood.



Plain Slice White Maple (NWM)



Plain Slice White Ash (NWA)



Vertical Grain Fir (NWF)



Rift White Oak (NRO)



Plain Slice White Oak (NOK)



Plain Slice Cherry (NPC)



Quartered Mahogany (NGM)



Quartered Sapele (NGS)



Quartered Walnut (NGW)



Plain Slice Walnut (NWN)

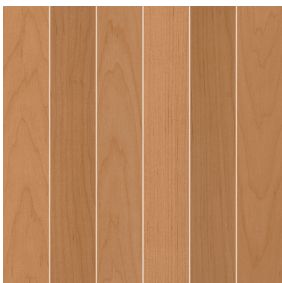
CUSTOM FINISHES



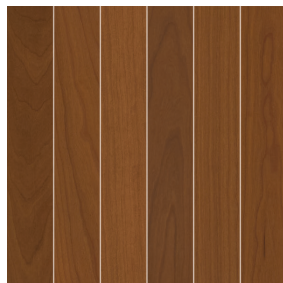
Custom Wood Species and Finishes Available

LEGACY VENEERS

Natural Variations™
Plain Slice



Maple (NMP)



Light Cherry (NLC)

Constants™
Vertical Grain



Walnut (CWA)



Redux Wood Wheat (CRW)

Due to printing limitations, shade may vary from actual product.



WOODWORKS® Concealed

Concealed Suspension

USDA
CERTIFIED
BIOBASED
PRODUCT
PRODUCT 100%

LEED® WELL™ LBC

80% RECYCLED CONTENT

For LEED contribution contact TechLine

energy management	construction waste mgmt	regional materials	design for flexibility	EPD	recyclable/extended producer resp.	biobased materials	FSC® (for wood)	recycled content	sourcing of raw materials	material ingredient reporting	low emitting materials	lighting quality	acoustics
▲	▲	▲	▲	▲	▲	▲	▲	▲	▲	▲	▲	▲	▲
LOCATION DEPENDENT				DEPENDENT				PREMIUM OPTION				WITH INFILL PANEL	

VISUAL SELECTION

Edge Profile	Item No. ♦	Dimensions Nominal W x L x H (Inches)	Perforations
	5983F01	24 x 48 x 3/4"	W1, W2, W3, W4, W5, W6
	5984F01	24 x 72 x 3/4"	W1, W2, W3, W4, W5, W6
	5985F01	24 x 96 x 3/4"	W1, W2, W3, W4, W5, W6

PERFORMANCE

CleanAssure™ Disinfectable Panels

Fire Rating	Fog	Spray	Wipe
Class A	•	•	•
Class A	•	•	•
Class A	•	•	•

ACOUSTICAL INFORMATION

Perforation	Infill Panel Item No.	Description	NRC
W1 Unperforated			N/A
W2 Round Straight	8200T10	Fiberglass	0.45
	1713BL	School Zone® Fine Fissured™	0.55
	2820BK	Calla®	0.55
	5823	BioAcoustic™	0.40
	5479	BioAcoustic	0.40
W3 Round Diagonal	8200T10	Fiberglass	0.45
	1713BL	School Zone® Fine Fissured	0.55
	2820BK	Calla	0.55
	5823	BioAcoustic	0.40
	5479	BioAcoustic	0.40
W4 Round Straight	8200T10	Fiberglass	0.60
	1713BL	School Zone® Fine Fissured	0.60
	2820BK	Calla	0.65
	5823	BioAcoustic	0.65
	5479	BioAcoustic	0.65
W5 Oval Straight Slotted	8200T10	Fiberglass	0.50
	1713BL	School Zone® Fine Fissured	0.50
	2820BK	Calla	0.55
	5823	BioAcoustic	0.45
	5479	BioAcoustic	0.45
W6 Oval Straight Slotted	8200T10	Fiberglass	0.40
	1713BL	School Zone® Fine Fissured	0.35
	2820BK	Calla	0.35
	5823	BioAcoustic	0.45
	5479	BioAcoustic	0.45
	1318	Backstage Noir	0.35

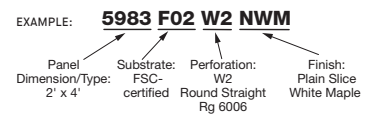
FAST
4 WEEKS
or Less

FAST134 program items ready to ship from manufacturer in 4 weeks or less. Up-to-date lead times and product options (sizes and colors) at armstrongceilings.com/fast134

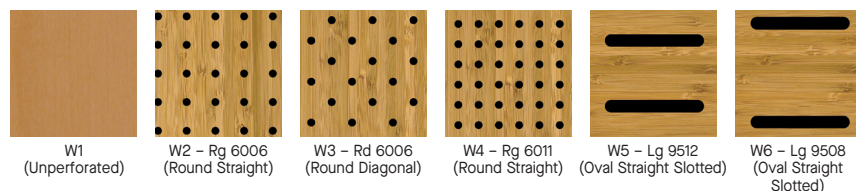
Edge Profile	Item No. ♦	Dimensions Nominal W x L x H (Inches)	Perforations
	5983F02	24 x 48 x 3/4"	W1, W2, W3, W4, W5, W6
	5984F02	24 x 72 x 3/4"	W1, W2, W3, W4, W5, W6
	5985F02	24 x 96 x 3/4"	W1, W2, W3, W4, W5, W6



♦ When specifying or ordering, include the appropriate 2-digit perforation and 3-letter color suffixes. For veneers, sizes, and perforation patterns available as special order, call TechLine at 1 877 276-7876.



PERFORATION OPTIONS (Actual 1:6 scale shown)



Custom Perforations Available

NOTE: Slotted perforations run parallel to the length of the panel and borders vary with panel size.

WOODWORKS® Concealed

Concealed Suspension

For LEED contribution contact TechLine

LEED® WELL | LBC

80% RECYCLED CONTENT

energy management

construction waste mgmt

regional materials

design for flexibility

EPD

recyclable/extended producer resp.

biobased materials

FSC® (for wood)

recycled content

sourcing of low materials

material ingredient reporting

low emitting materials

lighting quality

acoustics

LOCATION DEPENDENT DEPENDENT

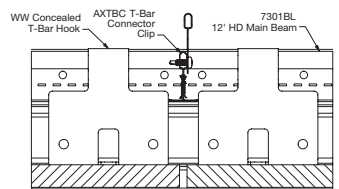
PREMIUM OPTION

WITH INFILL PANEL

When ordering suspension system materials, please note that this product requires Prelude® Heavy-duty (HD) main beams and 2' cross tees that are full height (1-11/16"). Both suspension system components should be specified in Black (BL). 15/16" Prelude® BL HD (Black)

ACCESSORIES

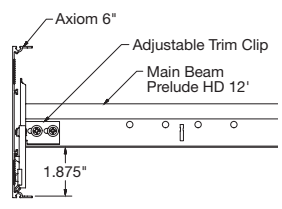
	Item No. ◆	Description	Dimensions Nominal W x L x H (Inches)	Color	PCS/ CTN	
Suspension Systems	7301	Prelude® XL® 12' HD Main Beam	15/16" x 144 x 1-11/16"	Black	20	
	XL8320BL	Prelude XL 2' Cross Tee	15/16" x 144 x 1-11/16"	Black	60	
	7800BL	Angle Wall Molding	7/8" x 144 x 7/8"		30	
	SH12	Support Hanger	144" x 2"		12	
Accessories	6091	Safety Cable	N/A	N/A	50	
	6408_ _ _	3/4" Edge Banding	3/4" x 300"	All Veneers	1	
	5986	T-Bar Hook †	4 x 2 x 3"		50	
	7123PKG300	Wood Screws	5/8"		300/PKF	
	Infill Panels	1713BL	Fine Fissured™ Lay-in Panel	24 x 24 x 3/4"	Black	14
2820BK		Calla® Lay-in Panel	24 x 24 x 1"	Black	10	
5479		BioAcoustic™ Infill Panel	24 x 24 x 5/8"	Beige Matte	12	
1318		Backstage Noir® Square Lay-in Panel	24 x 24 x 3/4"	Black	12	
5823		BioAcoustic Infill Panel	24 x 24 x 5/8"	Black Matte	12	
8200T10		Fiberglass Infill Panel	24 x 24 x 1"	Black Gloss	12	
Perimeter Trim		6481F01W1H6_ _ _	6" Veneered Trim with 4 Clips – Item 5925 (With Faux Wood Edgebanding on long edges)	6 x 96 x 3/4"	All Veneers	4
		6481F01W1H8_ _ _	8" Veneered Trim with 4 Clips – Item 5925 (With Faux Wood Edgebanding on Long Edges)	8 x 96 x 3/4"	All Veneers	4
	AX_VESTR_ _ _	Axiom® Vector Straight Trim – Recommend in Black 6" and up	N/A	Silver Grey, Black, Gun Metal	10 LF	
	AX_VECUR_ _ _	Axiom Vector Curved Trim – Recommend in Black 6" and up	N/A	Silver Grey, Black, Gun Metal	10 LF	
	6603W1BL	WoodWorks® Concealed Trim	6 x 120 x 6"	Black	6	
	7239	Adjustable Trim Clip	N/A	Mill Finish	50	
FSC® Certified Premium Trim*	6481F02W1H6_ _ _	6" FSC Veneered Trim with 4 Clips – Item 5925 (With Faux Wood Edgebanding on long edges)	6 x 96 x 3/4"	All Veneers	4	
	6481F02W1H8_ _ _	8" FSC Veneered Trim with 4 Clips – Item 5925 (With Faux Wood Edgebanding on Long Edges)	8 x 96 x 3/4"	All Veneers	4	



Installation Detail – WoodWorks® Concealed Ceiling System

◆ When specifying or ordering, include the appropriate 3-letter color suffix that coordinates with your WoodWorks ceiling (e.g. 6408 N W M).
 * FSC-certified wood is a premium option available through ASQuote.
 † For 24" x 48" panel, install 4 hooks; for 24" x 72" panel, install 6 hooks; for 24" x 96" panel, install 8 hooks.
 NOTE: Three screws per hook. Refer to armstrongceilings.com/installation for a better understanding of suspension systems requirements.

INSTALLATION OF TRIM (ALUMINUM SUBSTRATE) FOR WOODWORKS® PANELS



Adjustable Trim Clip (7239) in standard position

PHYSICAL DATA

Material
 Fire-rated particle board (FRPB) with real wood veneers. Vertical Grain Fir (NVF) is FRPB with a reconstituted veneer.

Surface Finish
 Clear or tinted semi-gloss coating

Fire Performance
 Class A: ASTM E84 surface burning characteristics. Flame Spread Index 25 or less. Smoke Developed Index 50 or less.

CAN/ULC S102 surface burning characteristics.
 Flame Spread Rating 25 or less. Smoke Developed Classification 50 or less.

ASTM E1264 Classification
 Type XX - Fire Class A

Primary (Embodied) Energy
 See all LCA information on our EPDs.

Application Considerations
 Variation among panels may occur due to the natural characteristics of the wood and grain.

Use of large wood panels may result in deflection up to 1/8" and cause alignment inconsistency due to size and ambient conditions.

It is very important that WoodWorks® panels be climatized prior to installation. Relative humidity between 25% and 55%, and temperatures between 50°F and 86°F, must be maintained throughout the life of the product.

Design Considerations
 All perforated panels are standard with fleece attached. Panels without fleece must be specified.

Do not mix different panel sizes with slotted perforations. Perforation borders will not align. The use of Armstrong® Prelude® 15/16" suspension system is strongly recommended.

Cloud installations less than 6' wide are not recommended. Not recommended for SingleSpan™ corridor applications.

Specification Consideration
 Attention: For FSC® certified wood products to maintain their CoC certification, products must be sold to a CoC certified distributor, or directly to the installing contractor. Failure to do so breaks the CoC.

Seismic Restraint
 WoodWorks Concealed panels have been engineered, tested, and approved for application in all seismic areas when installed per Armstrong Ceilings installation instructions.

Cleaning and Disinfecting
 Cleaning and CDC-approved disinfecting options available on armstrongceilings.com/cleaning

FAST134 Program Considerations
 Size of Job Matters: Big jobs, over 2500 SF or 50 pieces for shapes/vertical elements will have longer lead times.

Location Matters: Transit time not included. We are ready to ship in 1 week on FAST1 items. However, transit to the states west of Wyoming may add time.

Distributor Truck Schedule Matters: We rely on distribution to help move products around the country. When speed matters, work with your local distributor to ensure FAST134 service.

Stock vs. Made-to-Order Matters: FAST3 & FAST4 items are made-to-order and will ship direct to distributor. FAST1 (stocked items) will go through distribution and depend on distributor truck schedules.

Warranty
 Details at armstrongceilings.com/warranty

Weight/Square Feet
 5983F01, 5984F01, 5985F01 – 2.75 LBS/SF; bulk packaged per order. Suspension system, hardware, and accessories ordered separately.



WOODWORKS® – Standard