



CAD/Revit® drawings at:  
armstrongceilings.com/cadrevit

WoodWorks Tegular panels with W2 perforation in Constants™ Redux Wood Wheat and Sincerus™ Linear Air Purification System

Now get Total Acoustics® performance with WoodWorks® Tegular perforated panels – excellent noise reduction and sound blocking in one system.

#### KEY SELECTION ATTRIBUTES

- Get total noise control and design flexibility with Total Acoustics® ceiling panels: NRC + CAC = Total Acoustics
- Standard veneers feature various species and cuts for beautiful wood visuals
- ASTM E4 Class A Fire Performance

- The natural warmth of wood can contribute to biophilic designs and building certification standards like the WELL™ v2 "Nature and Place" feature
- Create upturns for continuous visuals and clouds with WoodWorks® trim

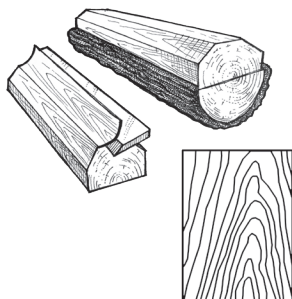
- Select products included in the FAST134 program – ready to ship in 4 weeks or less
- Shorter lead times and lower cost than custom millwork
- USDA Biobased Content: 100%



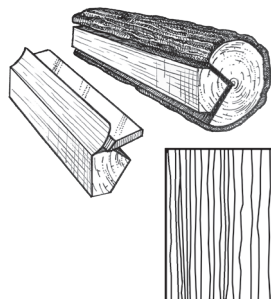
- FSC® certified wood available as a premium quoted option
- CleanAssure™ family of products – includes disinfectable panels, suspension systems, and trim

#### VENEER CUTS

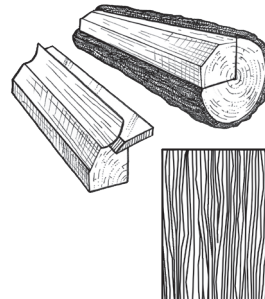
Different cuts of a log will yield different graining visuals. Choose your veneer to achieve your desired look.



**Plain Sliced**  
Produces the well-known cathedral or loop-grain effect.



**Quarter Sliced**  
Produces a striped, often straight-grain effect.



**Rift Sliced**  
Produces a tight, linear grain along the entire length of the veneer.

energy management	recyclable/extended producer resp.	biobased materials	FSC® (for wood)	recycled content	sourcing of raw materials	material ingredient reporting	low emitting materials	lighting quality	acoustics			
construction waste mgmt	regional materials	design for flexibility	EPD	recyclable/extended producer resp.	biobased materials	FSC® (for wood)	recycled content	sourcing of raw materials	material ingredient reporting	low emitting materials	lighting quality	acoustics
LOCATION DEPENDENT			PREMIUM OPTION			WITH INFILL PANEL						

FINISH RANGES

The carefully curated species and veneer cuts offer a beautiful natural variation. The images here reflect the visual range that is likely within our product. Darkest to lightest tones may occur within an installation due to the character of wood.



Plain Slice White Maple (NWM)



Plain Slice White Ash (NWA)



Vertical Grain Fir (NWF)



Rift White Oak (NRO)



Plain Slice White Oak (NOK)



Plain Slice Cherry (NPC)



Quartered Mahogany (NGM)



Quartered Sapele (NGS)

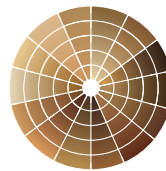


Quartered Walnut (NGW)



Plain Slice Walnut (NWN)

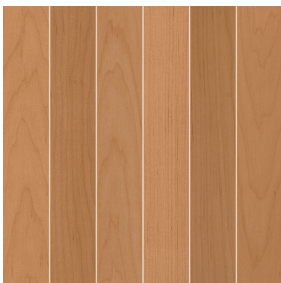
CUSTOM FINISHES



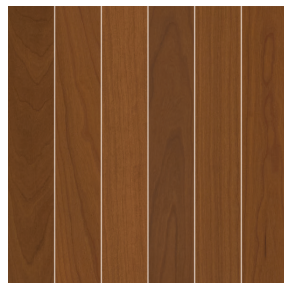
Custom Wood Species and Finishes Available

LEGACY VENEERS

Natural Variations™  
Plain Slice



Maple (NMP)



Light Cherry (NLC)

Constants™  
Vertical Grain



Walnut (CWA)



Redux Wood Wheat (CRW)

Due to printing limitations, shade may vary from actual product.



# WOODWORKS®

Tegular

USDA  
CERTIFIED  
BIOBASED  
PRODUCT  
PRODUCT 100%

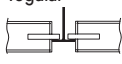
LEED®  
WELL™ LBC

80% RECYCLED  
CONTENT

For LEED contribution contact TechLine

regional materials	designer flexibility	EPD	recyclable/extended producer resp.	biobased materials	FSC® (for wood)	recycled content	sourcing of raw materials	material ingredient reporting	low emitting materials	lighting quality	acoustics
energy management	construction waste mgmt										
LOCATION DEPENDENT				PREMIUM OPTION				WITH INFILL PANEL			

## VISUAL SELECTION

Edge Profile	Item No. ♦	Dimensions Nominal W x L x H (Inches)	Perforations
WOODWORKS® Tegular	5404F01_ _ _ _ _	24 × 24 × 3/4"	W1, W2, W3, W4, W5, W6
9/16" Square Tegular	6484F01_ _ _ _ _	12 × 48 × 3/4"	W1, W2, W3, W4, W5, W6
	6485F01_ _ _ _ _	12 × 72 × 3/4"	W1, W2, W3, W4, W5, W6
	6486F01_ _ _ _ _	24 × 48 × 3/4"	W1, W2, W3, W4, W5, W6
	6487F01_ _ _ _ _	24 × 72 × 3/4"	W1, W2, W3, W4, W5, W6
TechZone® Panels	6510F01_ _ _ _ _	24 × 42 × 3/4"	W1, W2, W4
	6511F01_ _ _ _ _	30 × 30 × 3/4"	W1, W2, W4
	6512F01_ _ _ _ _	27 × 30 × 3/4"	W1, W2, W4

## PERFORMANCE

Fire Rating	CleanAssure™ Disinfectable Panels		
	Fog	Spray	Wipe
Class A	*	*	*
Class A	*	*	*
Class A	*	*	*
Class A	*	*	*
Class A	*	*	*
Class A	*	*	*
Class A	*	*	*
Class A	*	*	*

## ACOUSTICAL INFORMATION

Perforation	Infill Panel Item No.	Description	NRC	CAC
W1		Unperforated	N/A	42
W2	8200T10	Fiberglass	0.45	
	1713BL	School Zone® Fine Fissured™	0.55	39
	2820BK	Calla®	0.55	37
	5823	BioAcoustic™	0.40	24
	5479	BioAcoustic	0.40	24
W3	8200T10	Fiberglass	0.45	
	1713BL	School Zone Fine Fissured	0.55	39
	2820BK	Calla	0.55	37
	5823	BioAcoustic	0.40	24
	5479	BioAcoustic	0.40	24
W4	8200T10	Fiberglass	0.60	
	1713BL	School Zone Fine Fissured	0.60	39
	2820BK	Calla	0.65	37
	5823	BioAcoustic	0.65	24
	5479	BioAcoustic	0.65	24
W5	8200T10	Fiberglass	0.50	
	1713BL	School Zone Fine Fissured	0.50	39
	2820BK	Calla	0.55	37
	5823	BioAcoustic	0.45	24
	5479	BioAcoustic	0.45	24
W6	8200T10	Fiberglass	0.40	
	1713BL	School Zone Fine Fissured	0.35	39
	2820BK	Calla	0.35	37
	5823	BioAcoustic	0.45	24
	5479	BioAcoustic	0.45	24
	1318	Backstage Noir	0.35	31

**FAST 4 WEEKS or Less**

FAST134 program items ready to ship from manufacturer in 4 weeks or less. Up-to-date lead times and product options (sizes and colors) at [armstrongceilings.com/fast134](http://armstrongceilings.com/fast134)

FSC® certified* WOODWORKS Tegular	5404F02_ _ _ _ _	24 × 24 × 3/4"	W1, W2, W3, W4, W5, W6	Class A	*	*	*
	6484F02_ _ _ _ _	12 × 48 × 3/4"	W1, W2, W3, W4, W5, W6	Class A	*	*	*
	6485F02_ _ _ _ _	12 × 72 × 3/4"	W1, W2, W3, W4, W5, W6	Class A	*	*	*
	6486F02_ _ _ _ _	24 × 48 × 3/4"	W1, W2, W3, W4, W5, W6	Class A	*	*	*
	6487F02_ _ _ _ _	24 × 72 × 3/4"	W1, W2, W3, W4, W5, W6	Class A	*	*	*
FSC-certified TechZone Panels	6510F02_ _ _ _ _	24 × 42 × 3/4"	W1, W2, W4	Class A	*	*	*
	6511F02_ _ _ _ _	30 × 30 × 3/4"	W1, W2, W4	Class A	*	*	*
	6512F02_ _ _ _ _	27 × 30 × 3/4"	W1, W2, W4	Class A	*	*	*

♦ When specifying or ordering, include the appropriate 2-digit perforation and 3-letter color suffixes.  
 \* FSC-certified wood is a premium option available through [ASQuote@armstrongceilings.com](mailto:ASQuote@armstrongceilings.com)  
 NOTE: Items 6485 and 6487 (12" x 72" and 24" x 72" series) include suspension system stabilizer hooks. Dots represent high level of performance.

EXAMPLE: **5404 F02 W2 NWM**

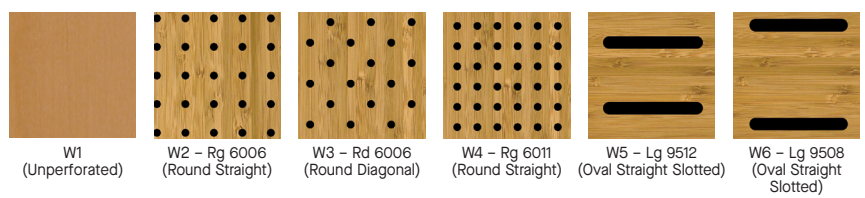
Panel Dimension/Type: 24" x 24"

Substrate: FSC certified

Perforation: W2 Round Straight

Finish: Plain Slice White Maple Rg 6006

## STANDARD PERFORATION OPTIONS (Actual 1:6 scale shown)



NOTE: Slotted perforations run parallel to the length of the panel and borders vary with panel size.

TechLine 877 276-7876  
[armstrongceilings.com/woodworks](http://armstrongceilings.com/woodworks)

**Armstrong®**  
 World Industries



WOODWORKS® - Standard

energy management	construction waste mgmt.	regional materials	design for flexibility	EPD	recyclable/extended producer resp.	bio-based materials	FSC® (for wood)	recycled content	sourcing of low materials	material ingredient reporting	low emitting materials	lighting quality	acoustics
LOCATION DEPENDENT					PREMIUM OPTION				WITH INFILL PANEL				

ACCESSORIES

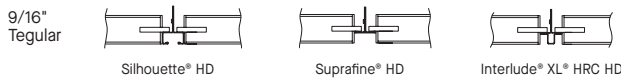
	Item No. ♦	Description	Dimensions Nominal W x L x H (Inches)	Color	PCS/ CTN
Suspension Systems	7501BL	Suprafine® XL® 12' Heavy Duty Main Beam	9/16 x 144 x 1-11/16"	Black	20
	XL7549BL	Suprafine 4' Cross Tee	9/16 x 48 x 1-11/16"	Black	60
	XL8520BL	Suprafine 2' Cross Tee	9/16 x 24 x 1-11/16"	Black	60
	7804BL	Angle Molding (recommended with wood trims)	7/8 x 144 x 9/16"	Black	30
Accessories	7891	12-Gauge Hanger Wire	144" Length	N/A	N/A
	6091	Safety Cable	N/A	N/A	50
	6408_ _ _	3/4" Edgebanding	3/4" x 300"	All Veneers	N/A
Infill Panels	1713BL	Fine Fissured™ Lay-in Panel	24 x 24 x 3/4"	Tech Black	14
	2820BK	Calla® Lay-in Panel	24 x 24 x 1"	Black	10
	5479	BioAcoustic™ Infill Panel	24 x 24 x 5/8"	Beige Matte	12
	1318	Backstage Noir® Square Lay-in Panel	24 x 24 x 3/4"	Black	12
	5823	BioAcoustic Infill Panel	24 x 24 x 5/8"	Black Matte	12
	8200T10	Fiberglass Infill Panel	24 x 24 x 1"	Black Gloss	12
Perimeter Trim	5415F01W1H4_ _ _	4" WoodWorks® Vector®/Tegular Trim with 4 clips (Item 5925)	4 x 96 x 3/4"	All Veneers	4
	5415F01W1H6_ _ _	6" WoodWorks Vector®/Tegular Trim with 4 clips (Item 5925)	6 x 96 x 3/4"	All Veneers	4
	5925	WoodWorks Trim Clips	N/A	N/A	1 (25 PC minimum order quantity)
	7239	Adjustable Trim Clip	N/A	Mill Finish	50
	AX_ VESTR_ _ _	Axiom® Vector Straight Trim	N/A	Silver Grey, Black, 10 LF Gun Metal	
	AX_ VECUR_ _ _	Axiom Vector Curved Trim	N/A	Silver Grey, Black, 10 LF Gun Metal	
FSC® certified Premium Trim*	5415F02W1H4_ _ _	4" WoodWorks Vector®/Tegular Trim with 4 clips (Item 5925)	4 x 96 x 3/4"	All Veneers	4
	5415F02W1H6_ _ _	6" WoodWorks Vector®/Tegular Trim with 4 clips (Item 5925)	6 x 96 x 3/4"	All Veneers	4

♦ When specifying or ordering, include the 3-digit color suffix that coordinates with your WoodWorks ceiling: (e.g. 5415F01W1H4 **N M P**)  
\* FSC-certified wood is a premium option available through ASQuote@armstrongceilings.com.



Axiom Trim also available in multiple colors and profile sizes. For details, visit [armstrongceilings.com/axiom](http://armstrongceilings.com/axiom)

SUSPENSION SYSTEMS (Heavy-duty)



Suprafine suspension system is available in many standard colors. All other suspension systems are available in standard White only. Other colors available as special order.

PHYSICAL DATA

**Material**  
Fire-rated particle board (FRPB) with real wood veneers.  
Vertical Grain Fir (NVF) is FRPB with a reconstituted veneer.

**Surface Finish**  
Clear or tinted semi-gloss coating

**Fire Performance**  
Class A: ASTM E84 surface burning characteristics.  
Flame Spread Index 25 or less. Smoke Developed Index 50 or less.

CAN/ULC S102 surface. Flame Spread Rating 25 or less. Smoke Developed Classification 50 or less.

**Acoustical Performance**  
CAC testing conducted using Silhouette suspension system.

**ASTM E1264 Classification**  
ASTM E1264 Type XX - Fire Class A

**Primary (Embodied) Energy**  
See all LCA information on our EPDs.

**Application Considerations**  
Variation among panels may occur due to the natural characteristics of the wood and grain.

It is very important that WoodWorks panels are climatized prior to installation. Relative humidity between 25% and 55%, and temperatures between 50°F and 86°F, must be maintained throughout the life of the product.

**Design Considerations**  
Different panels should not be installed together. Perforated border on 24" x 72" panels are different than other panel sizes.

All perforated panels are standard with fleece attached. Panels without fleece must be specified.

**Specification Consideration**  
Attention: For FSC-certified wood products to maintain their CoC certification, products must be sold to a CoC-certified distributor or directly to the installing contractor. Failure to do so breaks the CoC.

**Installation Considerations**  
Due to panel weight, 24" x 48" and 24" x 72" panels require that the suspension system be attached to the back with safety cables attached. 12" x 72" and 24" x 72" panels require the use of suspension system stabilizer clips (which are included in the cartons).

**Seismic Restraint**  
WoodWorks Tegular ceiling panels have been engineered, tested, and approved for application in all seismic areas when installed per Armstrong Ceilings installation instructions.

**Cleaning and Disinfecting**  
Cleaning and CDC-approved disinfecting options available on [armstrongceilings.com/cleaning](http://armstrongceilings.com/cleaning)

**FAST134 Program Considerations**  
Size of Job Matters: Big jobs, over 2500 SF or 50 pieces for shapes/vertical elements will have longer lead times.  
Location Matters: Transit time not included. We are ready to ship in 1 week on FAST1 items. However, transit to the states west of Wyoming may add time.  
Distributor Truck Schedule Matters: We rely on distribution to help move products around the country. When speed matters, work with your local distributor to ensure FAST134 service.  
Stock vs. Made-to-Order Matters: FAST3 & FAST4 items are made-to-order and will ship direct to distributor. FAST1 (stocked items) will go through distribution and depend on distributor truck schedules.

**Warranty**  
Details at [armstrongceilings.com/warranty](http://armstrongceilings.com/warranty)

**Weight: Square Feet**  
Panels - 2.75 LBS/SF

