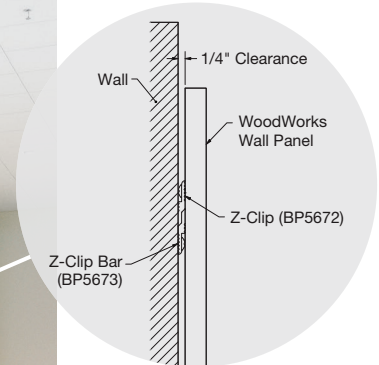




CAD/Revit® drawings at:
armstrongceilings.com/cadrevit



Nominal 24" × 72" WoodWorks Wall Panels and 24" × 24" WoodWorks® Vector® panels in Plain Slice White Maple with Axiom® Vector trim in Fern

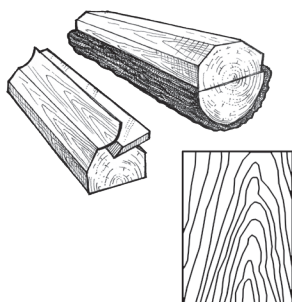
Wall system available in a variety of wood species, stains, sizes, and perforation options.

KEY SELECTION ATTRIBUTES

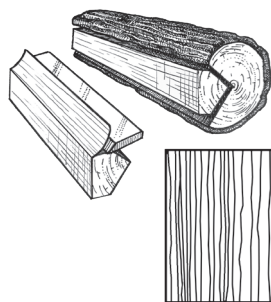
- Coordinate veneer choice with WoodWorks® ceilings
- Standard veneers feature various species and cuts for beautiful wood visuals
- ASTM E84 Class A Fire Performance
- The natural warmth of wood can contribute to biophilic designs and building certification standards like the WELL™ v2 "Nature and Place" feature
- Install panels horizontally or vertically using clips or splines
- Perforated panel with acoustical backing improves sound quality and reduces reverberation time within a space
- USDA-certified Biobased Product 100% (preferred for government projects)
- CleanAssure™ family of products – includes disinfectable panels, suspension systems, and trim
- Select products included in the FAST134 program – ready to ship in 4 weeks or less
- **new** FSC® certified wood available as a premium quoted option

VENEER CUTS

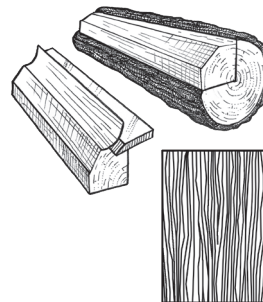
Different cuts of a log will yield different graining visuals. Choose your veneer to achieve your desired look.



Plain Sliced
Produces the well-known cathedral or loop-grain effect.



Quarter Sliced
Produces a striped, often straight-grain effect.



Rift Sliced
Produces a tight, linear grain along the entire length of the veneer.

WOODWORKS®

Wall Panels

USDA
CERTIFIED
BIOBASED
PRODUCT
PRODUCT 100%



LEED® WELL | LBC

80% RECYCLED CONTENT

- energy management
- construction waste mgmt.
- regional materials
- design for flexibility
- EPD
- recyclable/extended producer resp.
- biobased materials
- FSC® (for wood)
- recycled content
- sourcing of raw materials
- material ingredient reporting
- low emitting materials
- lighting quality
- acoustics

For LEED contribution contact TechLine

- LOCATION DEPENDENT
- PREMIUM OPTION
- WITH INFILL PANEL

FINISH RANGES

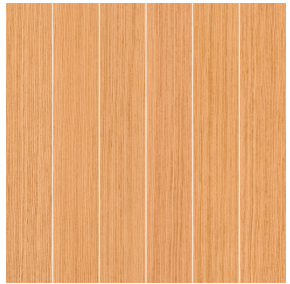
The carefully curated species and veneer cuts offer a beautiful natural variation. The images here reflect the visual range that is likely within our product. Darkest to lightest tones may occur within an installation due to the character of wood.



Plain Slice White Maple (NWM)



Plain Slice White Ash (NWA)



Vertical Grain Fir (NVF)



Rift White Oak (NRO)



Plain Slice White Oak (NOK)



Plain Slice Cherry (NPC)



Quartered Mahogany (NGM)



Quartered Sapele (NGS)



Quartered Walnut (NGW)



Plain Slice Walnut (NWN)

CUSTOM FINISHES



Custom Wood Species and Finishes Available

LEGACY VENEERS

Natural Variations™
Plain Slice



Maple (NMP)



Light Cherry (NLC)

Constants™
Vertical Grain



Walnut (CWA)



Redux Wood Wheat (CRW)

Due to printing limitations, shade may vary from actual product.



WOODWORKS®

Wall Panels



80% RECYCLED CONTENT

For LEED contribution contact TechLine



LOCATION DEPENDENT



PREMIUM OPTION



WITH INFILL PANEL

VISUAL SELECTION

| | Item No. ♦ | Dimensions Nominal W x L x H* (Inches) |
|---|---------------|--|
| WOODWORKS® Wall Panels | 5814F01__E1__ | 24 x 48 x 3/4" |
| (with acoustical fleece) | 5818F01__E1__ | 24 x 96 x 3/4" |
| Edge: Square (E1) Installation: Z-clip | 5819F01__E1__ | 24 x 108 x 3/4" |
| | 5820F01__E1__ | 24 x 120 x 3/4" |
| Edge: Kerfed (E4) Installation: Spline | 5814F01__E4__ | 24 x 48 x 3/4" |
| | 5818F01__E4__ | 24 x 96 x 3/4" |
| | 5819F01__E4__ | 24 x 108 x 3/4" |
| | 5820F01__E4__ | 24 x 120 x 3/4" |

FAST
4 WEEKS
or Less

FAST134 program items ready to ship from manufacturer in 4 weeks or less. Up-to-date lead times and product options (sizes and colors) at armstrongceilings.com/fast134

| | Item No. ♦ | Dimensions Nominal W x L x H* (Inches) |
|---|---------------|--|
| FSC® certified WOODWORKS Wall Panels | 5814F02__E1__ | 24 x 48 x 3/4" |
| (with acoustical fleece) | 5818F02__E1__ | 24 x 96 x 3/4" |
| Edge: Square (E1) Installation: Z-clip | 5819F02__E1__ | 24 x 108 x 3/4" |
| | 5820F02__E1__ | 24 x 120 x 3/4" |
| Edge: Kerfed (E4) Installation: Spline | 5814F02__E4__ | 24 x 48 x 3/4" |
| | 5818F02__E4__ | 24 x 96 x 3/4" |
| | 5819F02__E4__ | 24 x 108 x 3/4" |
| | 5820F02__E4__ | 24 x 120 x 3/4" |

♦ When specifying or ordering, include the appropriate perforation and finish suffixes. (e.g., 5814F01 W1 E1 N W M)
NOTE: For veneers and sizes available as special order, call TechLine at 1 877 276-7876.
* Panels will be installed with 1/4" or larger gap between panels. When using spline installation, module will be 24".

PERFORMANCE

Dots represent high level of performance.

| Fire Performance | CleanAssure™ Disinfectable Panels | | |
|------------------|-----------------------------------|-------|------|
| | Fog | Spray | Wipe |
| Class A | * | * | * |
| Class A | * | * | * |
| Class A | * | * | * |
| Class A | * | * | * |
| Class A | * | * | * |
| Class A | * | * | * |
| Class A | * | * | * |
| Class A | * | * | * |
| Class A | * | * | * |
| Class A | * | * | * |
| Class A | * | * | * |
| Class A | * | * | * |
| Class A | * | * | * |
| Class A | * | * | * |

ACOUSTICAL INFORMATION

NRC Rating
D-20 Mounting with acoustical fleece C-20 Mounting with 1" fiberglass infill **

| Perforation | NRC | NRC |
|--------------------------|------|------|
| W1 Unperforated | N/A | N/A |
| W2 Round Straight | 0.50 | 0.65 |
| W3 Round Diagonal | 0.50 | 0.65 |
| W4 Round Straight | 0.55 | 0.80 |
| W5 Oval Straight Slotted | 0.45 | 0.70 |
| W6 Oval Straight Slotted | 0.45 | 0.60 |

** Fiberglass Infill Panel Item 8200T10

WoodWorks Walls perforations align with the following ceiling panels:

| Perforation | WoodWorks® Vector® | WoodWorks Concealed |
|-------------|--------------------|---------------------|
| W2 | ✓ | ✓ |
| W3 | ✓ | ✓ |
| W4 | ✓ | |
| W5 | ✓ | |
| W6 | ✓ | |



PARTITIONS & WALLS

WOODWORKS®

Wall Panels



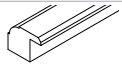
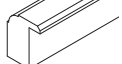
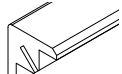
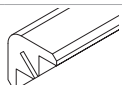

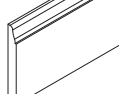
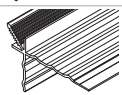
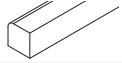

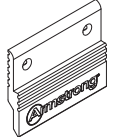
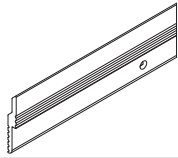
80% RECYCLED CONTENT

- energy management
- construction waste mgmt
- regional materials
- design for flexibility
- EPD
- recyclable/extended producer resp.
- biobased materials
- FSC® (for wood)
- recycled content
- sourcing of raw materials
- material ingredient reporting
- low emitting materials
- lighting quality
- acoustics

For LEED contribution contact TechLine

- PREMIUM OPTION
- WITH INFILL PANEL

ACCESSORIES

| | Item No. ♦ | Description | Dimensions | Finish/Material | Pieces/Carton |
|-------------------------|----------------------|--|----------------|-----------------------------------|---|
| Finish Accessories* | 6481F01W1H_ _ _ _ ♦♦ | 4", 6", 8" Veneered Trim with 4 Clips - Item 5925 (With Faux Wood Edgebanding on Long Edges) | 96" x 3/4" | All Finishes | N/A |
| | 5849F51_ _ _ | Finish Molding (without furring strips) | 1.15" x 126" | All Finishes | Bulk  |
| | 5907F51_ _ _ | Trim Finish Molding (with furring strips) | 1-7/8" x 126" | All Finishes | Bulk  |
| | 5851F51_ _ _ | Peak Corner | 126" | All Finishes | Bulk  |
| | 5852F51_ _ _ | Bullnose Corner | 126" | All Finishes | Bulk  |
| | 5855F51_ _ _ | 4" Base Molding | 4" x 95" | All Finishes | Bulk  |
| | 5856F51_ _ _ | 6" Base Molding | 6" x 95" | All Finishes | Bulk  |
| | 585910_ | Corner Installation Spline | 118" | Plastic (X) or Aluminum (Y) | Bulk  |
| | 5867F51_ _ _ | Wall Trim Inside Corner | 126" | All Finishes | Bulk  |
| | 6408_ _ _ | WoodWorks Edgebanding Coordinating Faux Wood | 3/4" x 300" | All Finishes | 25 LF |
| Installation Components | 663910_ _ | Wall Installation Spline | 120" | Black (BL), Natural Anodized (NA) | Bulk  |
| | 5672 | Z-clip | 2" | Aluminum | 250 PCS/CTN  |
| | 5673 | Z-clip Bar | 72" | Aluminum | 20 PCS/CTN  |
| Infill Panels | 5479 | BioAcoustic | 24 x 24 x 5/8" | Beige - Matte | 12 PCS/CTN |
| | 8200T10 | Fiberglass Infill Panel | 24 x 24 x 1" | Black - Gloss | 12 PCS/CTN |

- ♦ When specifying or ordering, include the appropriate 1-, 2-, or 3-letter suffix (e.g., 5855F51 N W M = 4" Base Molding in Plain Slice White Maple).
- ♦♦ When specifying or ordering, include the height (4, 6, or 8) and 3-letter veneer suffix that coordinates with your WoodWorks ceiling (e.g. 6481F01W1H 4 N W M).
- * Finish accessories are solid wood that is stained to coordinate with veneer finishes.

PHYSICAL DATA

Material

Fire-Rated Particle Board (FRPB) with real wood veneers. Vertical Grain Fir (NVF), Constants(TM) Walnut (CWA), and Constants Redux Wood Wheat (CRW) are FRPB with a reconstituted veneer.

Surface Finish

Clear or tinted semigloss coating

Fire Performance

Class A: ASTM E84 surface burning characteristics. Flame Spread Index 25 or less. Smoke Developed Index 50 or less. CAN/ULC S102 surface burning characteristics. Flame Spread Rating 25 or less. Smoke Developed Classification 50 or less.

Application Considerations

Variation among panels may occur due to the natural characteristics of the wood and grain (special order panels available).

It is very important that WoodWorks® panels are climatized prior to installation. Relative humidity between 25% and 55% and temperatures between 50°F and 86°F must be maintained throughout the life of the product.

Design Considerations

The reveal width on WoodWorks® Regular panels and WoodWorks Walls is different. For an application with the same size reveal in the ceiling and on the wall, order custom-cut panels or use Vector® ceiling panels Z-clipped to the wall.

Specification Consideration

Attention: For FSC®-certified wood products to maintain their CoC certification, products must be sold to a CoC-certified distributor or directly to the installing contractor. Failure to do so breaks the CoC.

FAST134 Program Considerations

Size of Job Matters: Big jobs, over 2500 SF or 50 pieces for shapes/vertical elements will have longer lead times.

Location Matters: Transit time not included. We are ready to ship in 1 week on FAST1 items. However, transit to the states west of Wyoming may add time.

Distributor Truck Schedule Matters: We rely on distribution to help move products around the country. When speed matters, work with your local distributor to ensure FAST134 service.

Stock vs. Made-to-Order Matters: FAST3 & FAST4 items are made-to-order and will ship direct to distributor. FAST1 (stocked items) will go through distribution and depend on distributor truck schedules.

Warranty Details at armstrongceilings.com

Weight; Square Feet/Carton
Panels - 2.75 LBS/SF; bulk packaged per order.

