

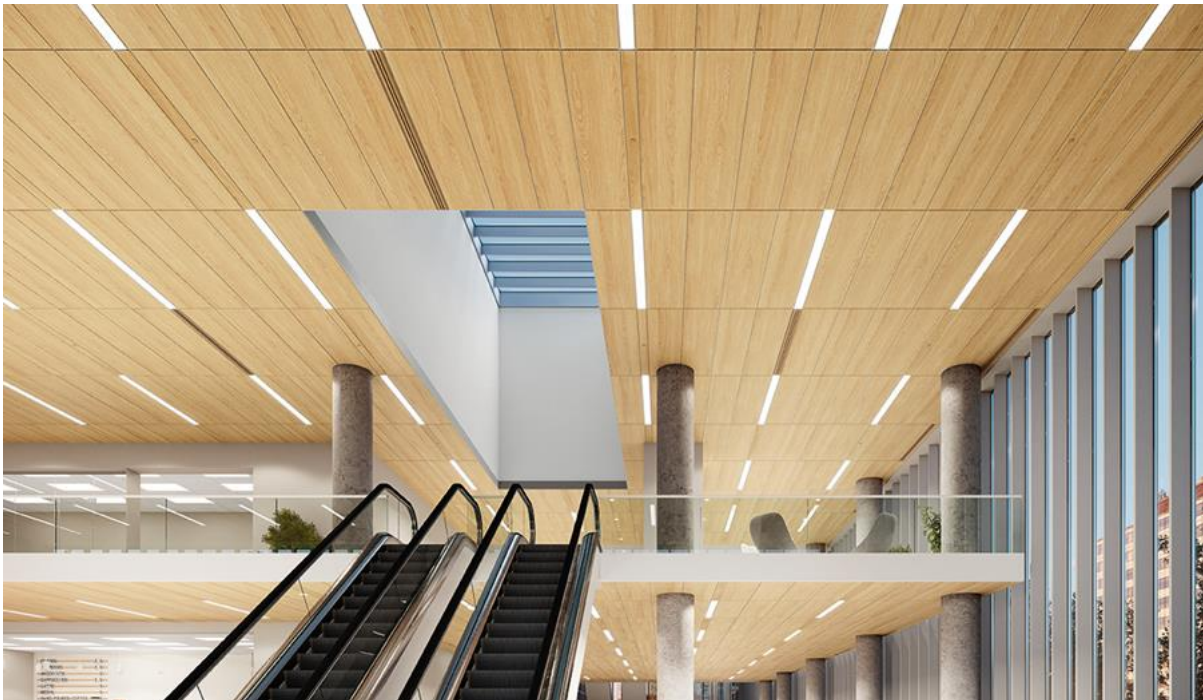


**Press Release**  
**FOR IMMEDIATE RELEASE**  
November 15, 2022

**CONTACT:**  
**Cindy O'Neill**  
717-396-5671  
717-725-9514  
[email](#)

## **Lyra® PB Ceiling Panels Now Available in New Wood-Look Visuals**

*Panels combine the realistic beauty of large format wood ceilings with superior sound absorption and sustainability without the expense*



LANCASTER, Pa. – With the addition of new realistic wood-look visuals to its line of Lyra® PB ceiling panels, Armstrong Ceiling & Wall Solutions has combined the beauty of large format wood ceilings with superior sound absorption and sustainability without the expense.

[Lyra PB Wood-Look panels](#) have an NRC of up to 0.95, providing superior acoustical performance without perforations. Made with a plant-based binder, Lyra

PB Wood-Look panels are part of the Armstrong® Sustain® portfolio and meet the most stringent industry sustainability standards today.

### Available in Eight Wood-Look Visuals

The new Lyra Wood-Look panels are available in eight visuals, including Brown Sugar Walnut, Toffee Chestnut, Vanilla Ash, Honey Oak, Earl Grey Teak, Coconut Birch, Bourbon Cherry, and Dark Mocha Walnut.

Lyra Wood-Look panels create the look of wood in monolithic, large format panels that are available as standard items in a variety of sizes up to 4' x 4'. The lightweight panels are mold- and mildew-resistant and offer fast and easy installation on standard 15/16" and 9/16" suspension systems. The panels are also sag-resistant, making them perfect for high-humidity applications. Axiom® Trim options are available for cloud installations and the panels are compatible with TechZone® ceiling systems.

For more information about Lyra PB Wood-Look ceiling panels, visit [www.armstrongceilings.com/lyrawoodlook](http://www.armstrongceilings.com/lyrawoodlook).

If help is needed, reach an Armstrong TechLine expert at [armstrongceilings.com/techline](http://armstrongceilings.com/techline).

### About Armstrong World Industries

Armstrong World Industries, Inc. (AWI) is a leader in the design and manufacture of innovative commercial and residential ceiling, wall, and suspension system solutions in the Americas. With \$1.1 billion in revenue in 2021, AWI has approximately 3,000 employees and a manufacturing network of 15 facilities, plus six facilities dedicated to its WAVE joint venture.

#### DOWNLOAD

[High-res image 1](#)  
(Lobby)

[High-res image 2](#)  
(Conference Room)

#### RELATED LINKS

[Lyra PB Wood Look Ceilings](#)

[Sustain Portfolio](#)

#### RELATED NEWS

[Press Room](#)

#### VIDEO

