

How to Install QuickHang™ Hooks and Brackets



FOR RESIDENTIAL USE:

The QuickHang™ hardware is designed to work with solid wood and engineered wood joists in residential drop ceiling applications. Use with metal ceiling grid.

SAFETY TIPS:

- QuickHang hardware is designed to support ceiling and grid components only.
- Make sure your work area is clear of obstructions and that your ladder is stable.
- Do not cut the pre-bent hooks. If the hook needs to be shortened due to an obstruction, the top portion can be bent by hand or with pliers.

INSTALLING THE HARDWARE:

Main Beams should be spaced 4' apart and QuickHang Hardware no further than 4' apart.

STEP 1: Make a 1" long vertical mark up the side of each joist where a bracket will be located **(A)**.

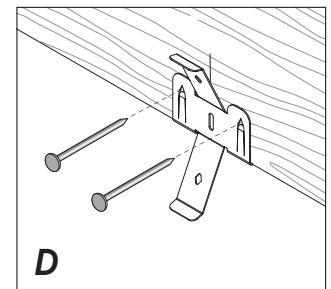
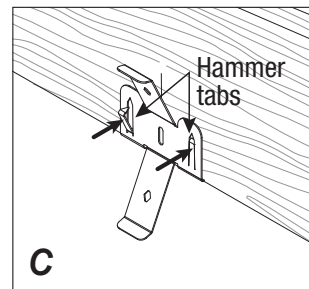
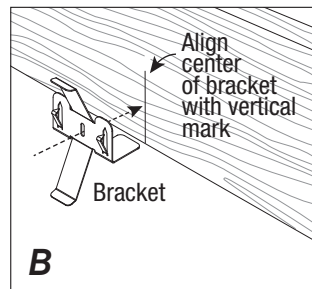
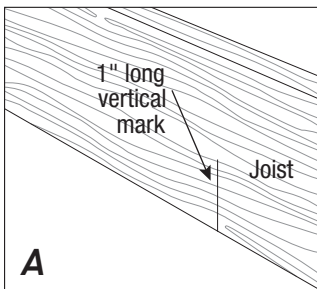
Tip: Measure and mark your joists prior to installation. Use a string line or chalk line to align marks perpendicular to joists across the room.

STEP 2: Use the center hole in the brackets to line the brackets up with your marks **(B)**.

STEP 3: Hammer in the 2 tabs for a temporary hold **(C)**.

STEP 4: Nail the bracket to the joist through the two openings above the hammer tabs with the nails included in the kit **(D)**.

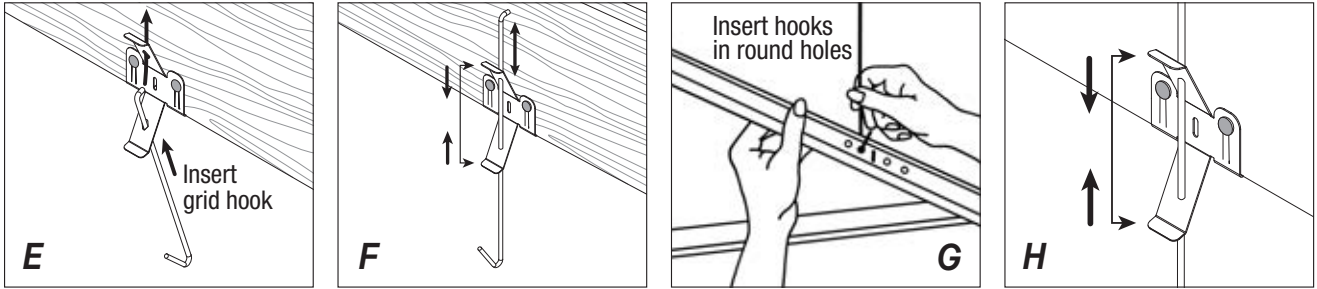
Optional: You can also use a single #5 Wood Screw through the center hole (sold separately).



How to Install QuickHang™ Hooks and Brackets



STEP 5: With the bracket securely attached to the joist, insert the grid hook using the diamond-shaped holes in the brackets. Thread the small end of the hook, from the back, through the lower hole (**E**). Push the hook up and rotate to thread through the upper hole, squeezing the spring tabs to allow the wire to go through (**F**).



STEP 6: Turn all hooks in the same direction, parallel to joists. Set all hooks to about the same height.

STEP 7: Install grid main beams on hooks (**G**), and install the remaining grid components throughout the room. Adjustments and leveling of your grid system can be done by squeezing the spring tabs and lifting or lowering the hook (**H**).

Complete ceiling and grid installation instructions are available at ceilings.com/installation