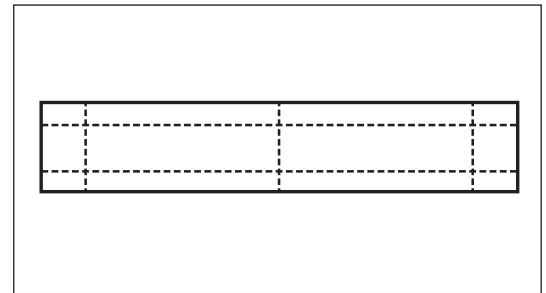


How to replace a damaged Country Classic™ Plank installed with the Easy Up® System



REMOVE DAMAGED PLANK

1. Cut the damaged plank using a sharp utility knife. (*illus. A*) Always cut from the edge to the center to minimize the possibility of cutting into an adjacent plank.
2. Remove the pieces in the center.
3. Pull the edge pieces to the center and remove them.
4. Slide the clips that held the old plank into the opening and remove them.
5. Turn the clips around and snap them back onto the track with teeth facing the plank in the previous row.
6. Slide the clips toward the plank so the teeth pass just above the tongue of the plank.
7. Push the clips so the teeth penetrate the plank. This will support the undamaged plank.



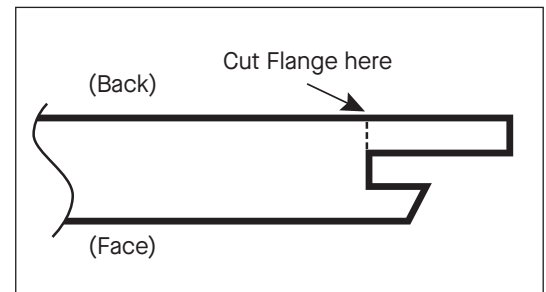
illus. A

PREPARE NEW PLANK FOR INSTALLATION

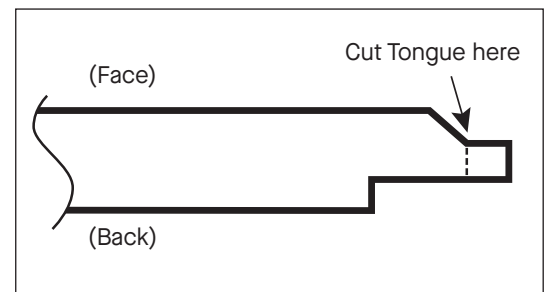
1. Prepare the new plank by cutting off the end and side flanges. (*illus. B*)
2. Cut off the tongue on the end of the plank. (*illus. C*)

INSTALL THE NEW PLANK

1. Hold the plank up to the opening.
2. Mark the back of the plank where the sides of the tracks behind this plank are located.
3. Using marks as a guide, force clips into the cut edge of the plank on the side opposite the remaining tongue.
4. Insert remaining tongue into adjacent plank, carefully using the tongue as a “hinge” to swing plank up into place. (When aligned correctly, the clips on the back of the plank will line up with the tracks above it.)
5. Push up on the plank; snap clips onto the track.
6. Apply white glue to the cut sides of the plank before installing, if desired.



illus. B



illus. C

For additional information on installing plank ceilings, including special installation tips, please visit our website at ceilings.com/installation or call customer service at 1-877-ARMSTRONG (276-7876).