



Ceiling &
Wall Panels

TECTUM[®]

Inspiring Great Spaces[®]

Armstrong[®]
CEILING & WALL SOLUTIONS

TECTUM®

Ceiling & Wall Panels

Tectum® ceiling and wall panels provide durable, sustainable, acoustical solutions with unlimited design options. Tectum 1" thick panels are part of the Sustain® portfolio and meet the most stringent sustainability standards today. They are the first and only acoustical ceiling and wall solutions that are Living Product Imperative Certified by the International Living Future Institute and now have UL® Certified acoustics.

Direct-Attach in custom colors;
Kalamazoo Public Library, Kalamazoo, MI;
David Milling Architects, Ann Arbor, MI ▶



4
SUSTAINABILITY



6
BLADES &
BAFFLES



7
SHAPES &
CLOUDS



8
DIRECT-ATTACH
CEILINGS & WALLS



10
FINALE™ HIGH NRC
CEILINGS & WALLS



11
LAY-IN & TEGULAR
CEILINGS



12
FABRIC WALLS/
PANEL ART
CEILINGS & WALLS



14
SIZES, COLORS &
ACOUSTICAL
PERFORMANCE





▲ Tectum® Direct-Attach Ceiling Panels; Temple School of Architecture, Philadelphia, PA; NELSON, Philadelphia, PA

THE SUSTAIN[®] Portfolio Contributes To Better Spaces



1" Thick Tectum® Panels in White and Natural



White
(TWH)



Natural
(TNA)

Here's how:

- Contribute to LEED® v4 (including new Materials and Resources credits)
- Have Health Product Declarations (HPDs) which tell you what's in the products
- Are free of Red List chemicals per Living Building ChallengeSM 3.0 (including no added formaldehyde)
- Have DeclareSM labels – easy reference “nutrition labels”
- Meet California Department of Public Health (CDPH) low emissions standards
- Have Environmental Product Declarations (EPDs) which tell you the impact of the products
- Contribute to Living Building Challenge
- Contribute to WELL Building StandardTM

LIVING PRODUCT Challenge

Tectum® is made of fibers from one of the most sustainably harvested trees of its kind, the Wisconsin Aspen. The part of the Aspen that grows above ground can live between 40-150 years.

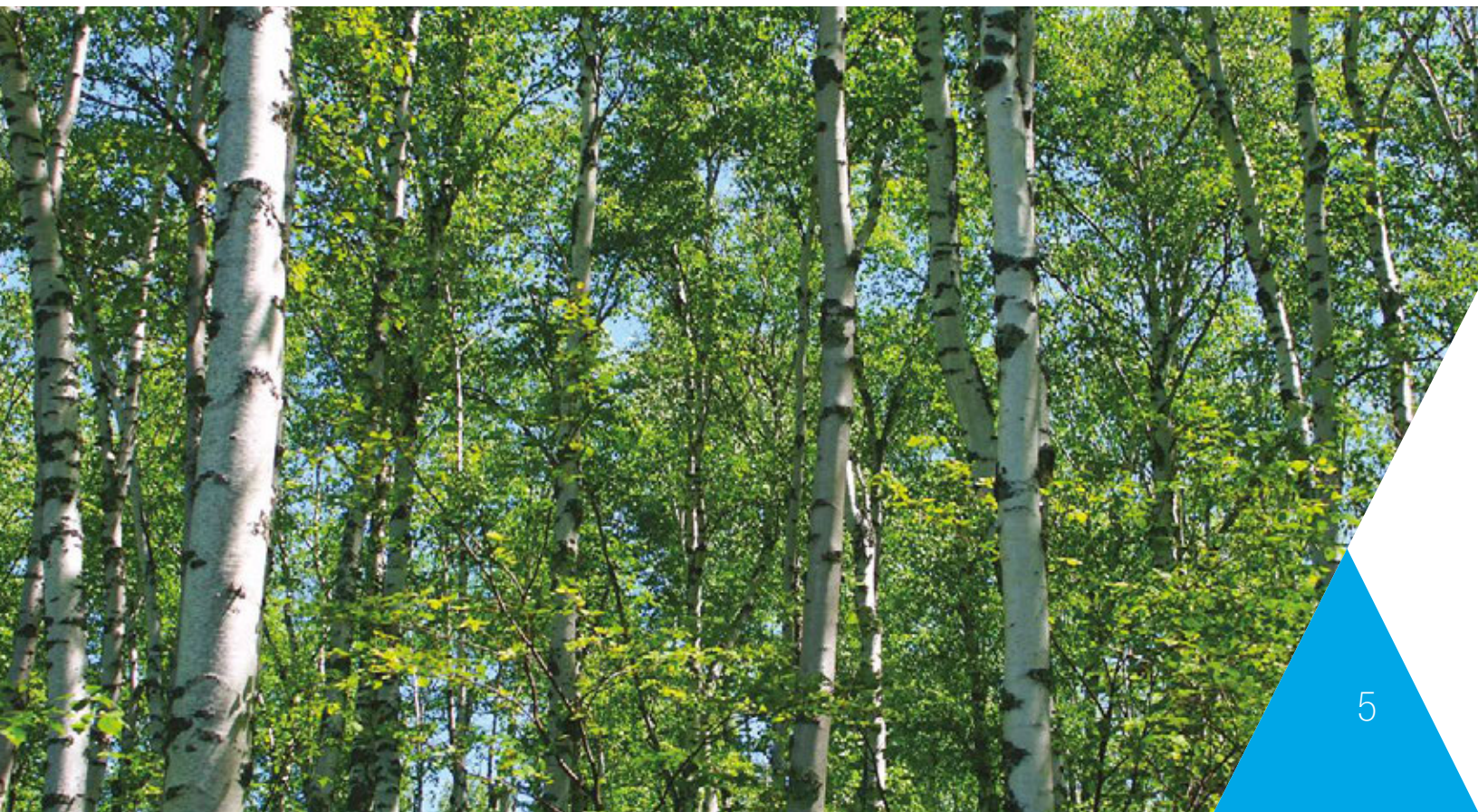
The root system of the Aspen can survive thousands of years. Aspen quickly regenerate from their root system after the trunks have been harvested.

Tectum products are made of natural fibers and binders that are turned into unique, sound absorbing, textured ceiling and wall panels that bring nature inside. Ideal for spaces where sustainability, durability, and noise control are needed.

Tectum panels are the first and only acoustical ceiling and wall solution to be Living Product Imperative Certified by the International Living Future Institute.



▼ Wisconsin Aspen Trees



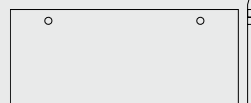
Blades & Baffles FIT TO THE MAX

Vertical elements control acoustics with an upscale linear visual.

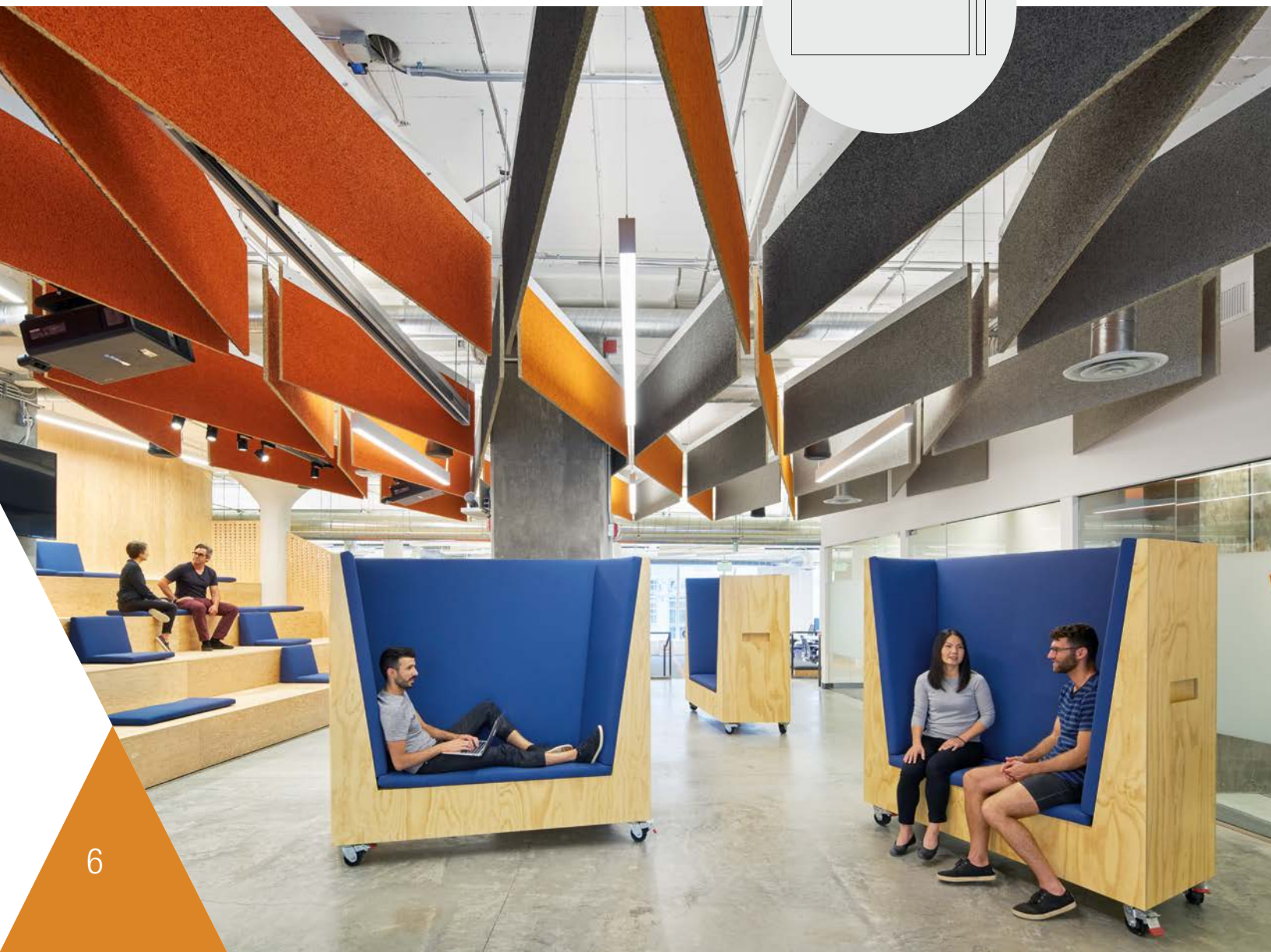
- Upscale linear visual adds acoustics and aesthetics to any space
- Noise absorption up to 0.60 Sabins/SF
- Custom shapes and sizes available to meet your project needs
- Mounting channels available to extend panel length beyond four feet

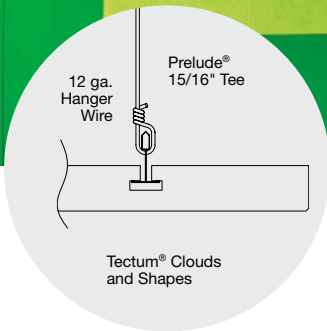


Hang with hanger wire or aircraft cables



▼ Tectum® Blades custom acoustical panels; Cisco Umbrella, San Francisco, CA





▲ Tectum® Clouds; Retail Me Not, Austin, TX; STG Design, Austin, TX

- Noise absorption up to 0.50 Sabins/SF
- Wide variety of color options available
- Installs with 15/16" Prelude® suspension system
- Square or radius edges
- Made in sizes up to 4' and can be suspended or direct-attached to drywall grid system

Shapes & Clouds

FLEXIBLE FIT

Shapes and Clouds offer design flexibility in a floating system.



▲ Tectum® Panel Art and Direct-Attach wall panels in White and custom colors; Boys & Girls Club of Lancaster, Lancaster, PA

Direct-Attach FIT THE BILL

Install panels directly to ceilings and walls to add durability and noise reduction to a wide variety of spaces using a sustainable solution.



- Tectum® Direct-Attach panels now have UL® Certified acoustics with acoustical testing and reporting that align with industry-wide best practices
- 1" panels in White and Natural are Living Product Challenge Certified by the International Living Future Institute
- 1" thick panels are part of the Sustain® portfolio
- FSC® Certified panels
- Excellent sound absorption – NRC up to 1.0 (mounting and thickness dependent)
- Retrofit solution for noise reduction
- Can be mechanically fastened to a wide variety of surfaces
- Now you can install 1" thick Tectum on Trusses and I-Beams for added acoustics while maintaining an exposed structure visual on the deck
- Durable for heavy-use interiors, pools, and exterior-covered spaces



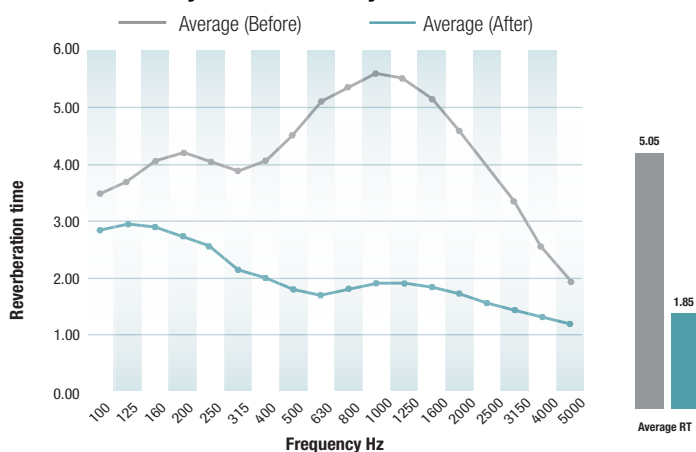
SUSTAIN®
High Performance
Sustainable
Ceiling Systems

CASE STUDY



Project | Boys & Girls Club of Lancaster
 Location | Lancaster, PA
 Architect | You Inspire™ Solutions Center
 Product | Tectum® Direct-Attach Wall Panels,
 Tectum Panel Art Shapes and SoundSoak® Baffles

Boys & Girls Club Gymnasium



the challenge:

The gymnasium at the Boys & Girls Club of Lancaster is in use every day, not only for sports activities but a variety of other functions as well. Its acoustic environment, however, was not always ideal. Acoustical testing showed that reverberation time in the gym was 5.05 seconds, far above the 2.00 seconds or less recommended for this type of space. As Karen Schloer, the Club's Chief Executive Officer, notes, "The noise level was putting a real strain on the staff because they had to shout so often when trying to communicate with the kids."

the solution:

To solve the problem, Armstrong Ceiling and Wall Solutions installed more than 3,500 square feet of Tectum® Direct-Attach wall panels on the gym's masonry walls. The panels were chosen because of their ability to absorb both sound and the impact of basketballs, volleyballs, and other objects that hit the walls.

Aesthetically, the two-inch-thick, 2' x 4' panels are installed in ribbons of white and a custom blue that match the Club's colors. They start nearly 10-feet off the floor and continue up the wall another 18-feet.

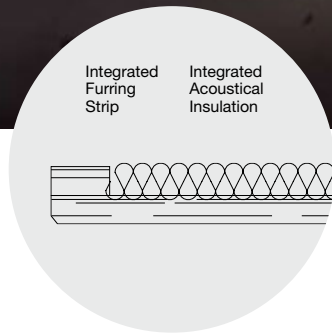
In addition, a re-creation of the Boys & Girls Club logo is installed at each end of the gym. The 15-foot wide and 13-foot high visual of two interlocking hands was created using eight-inch triangular Tectum Panel Art shapes. The white triangles are one-inch thick, while the blue triangles are two-inches thick so that they stand out from the wall. Two rows of 12 SoundSoak® Baffles were installed in the center of the ceiling for added noise absorption.

Acoustically, the 2" Direct-Attach Tectum wall panels have a Noise Reduction Coefficient (NRC) of 0.70. Acoustical testing conducted after the installation of the combination acoustical treatment showed that reverberation time dropped to 1.85 seconds, a 63% reduction. According to Chief Operations Officer, Scott McLellan, "The difference is like night and day. The biggest takeaway is how much easier it is now for the staff to gain control of the space because the kids can hear directions much more clearly."

Looking back at the difference in the gym's acoustic comfort, McLellan adds, "The staff simply didn't realize how bad it was because they didn't realize how good it could be."



▲ Tectum® Finale™ high NRC ceiling panels; Financial Services Company; United States



Finale™ High NRC A SOUND FIT

Finale™ ceiling and wall panels have built-in furring pieces with factory-filled panels that provide maximum sound control and install 2.5x faster than C-20 mount Direct-Attach panels for reduced installation costs. A perfect way to add acoustics to exposed structure spaces.



- 1" thick Tectum® Finale™ ceiling and wall panels with 1" factory-attached furring are now available as standard items. Sold by the piece – get the quantity you need without extra material



- White & Natural standard Finale ceiling and wall panels included in FAST3 program – panels ship from manufacturer to shipping location in 3 weeks or less
- Excellent sound absorption – NRC up to 0.95 (mounting method dependent)
- Available in White, Natural, and custom colors



SUSTAIN®
High Performance
Sustainable
Ceiling Systems



**TOTAL
ACOUSTICS®**
Sound Absorption (NRC)
+ Sound Blocking (CAC)

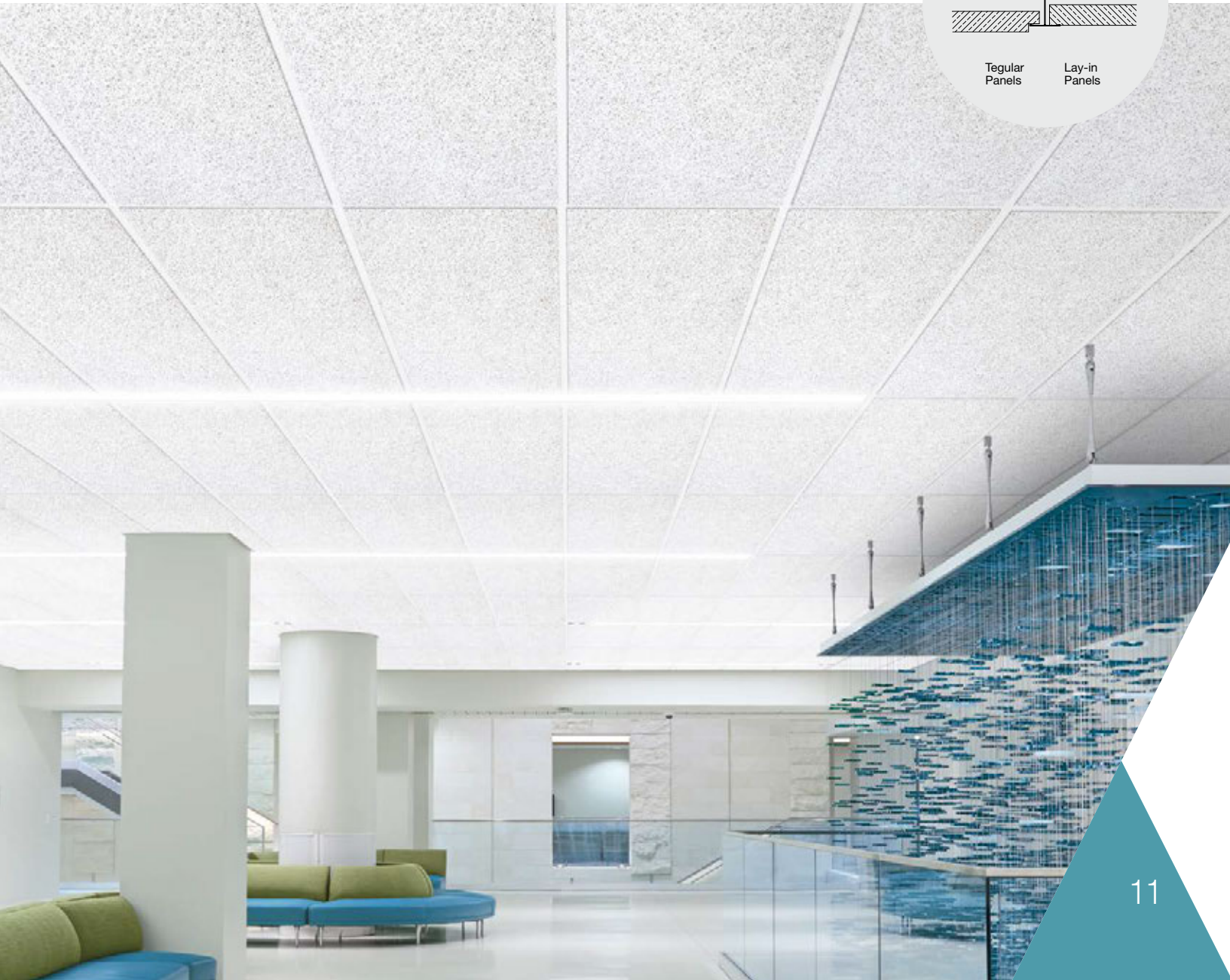
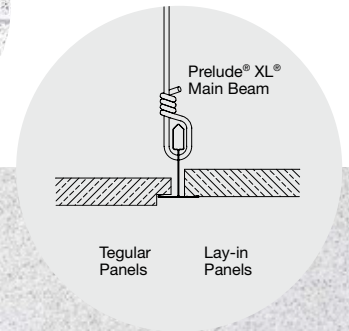
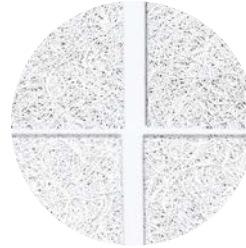


- Tectum® Direct-Attach panels now have UL® Certified acoustics with acoustical testing and reporting that align with industry-wide best practices
- 1" panels in White and Natural are Living Product Challenge Certified by the International Living Future Institute
- 1" thick panels are part of the Sustain® portfolio
- Tegular panels have Total Acoustics® Performance (NRC 0.90 CAC 35) with 1713 infill panel
- FSC® Certified panels
- Durable for heavy-use interiors

Lay-In & Tegular FIT FOR PURPOSE

Durable, sustainable, noise control for spaces requiring acoustics and design flexibility.

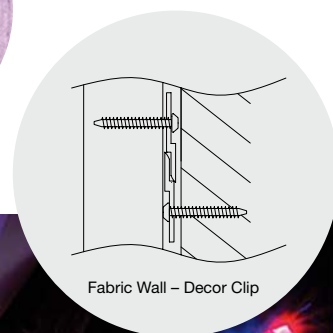
▼ Tectum® Tegular 24" x 48" panels in White with Prelude® XL® 15/16" suspension system



Fabric Walls TWICE THE FIT

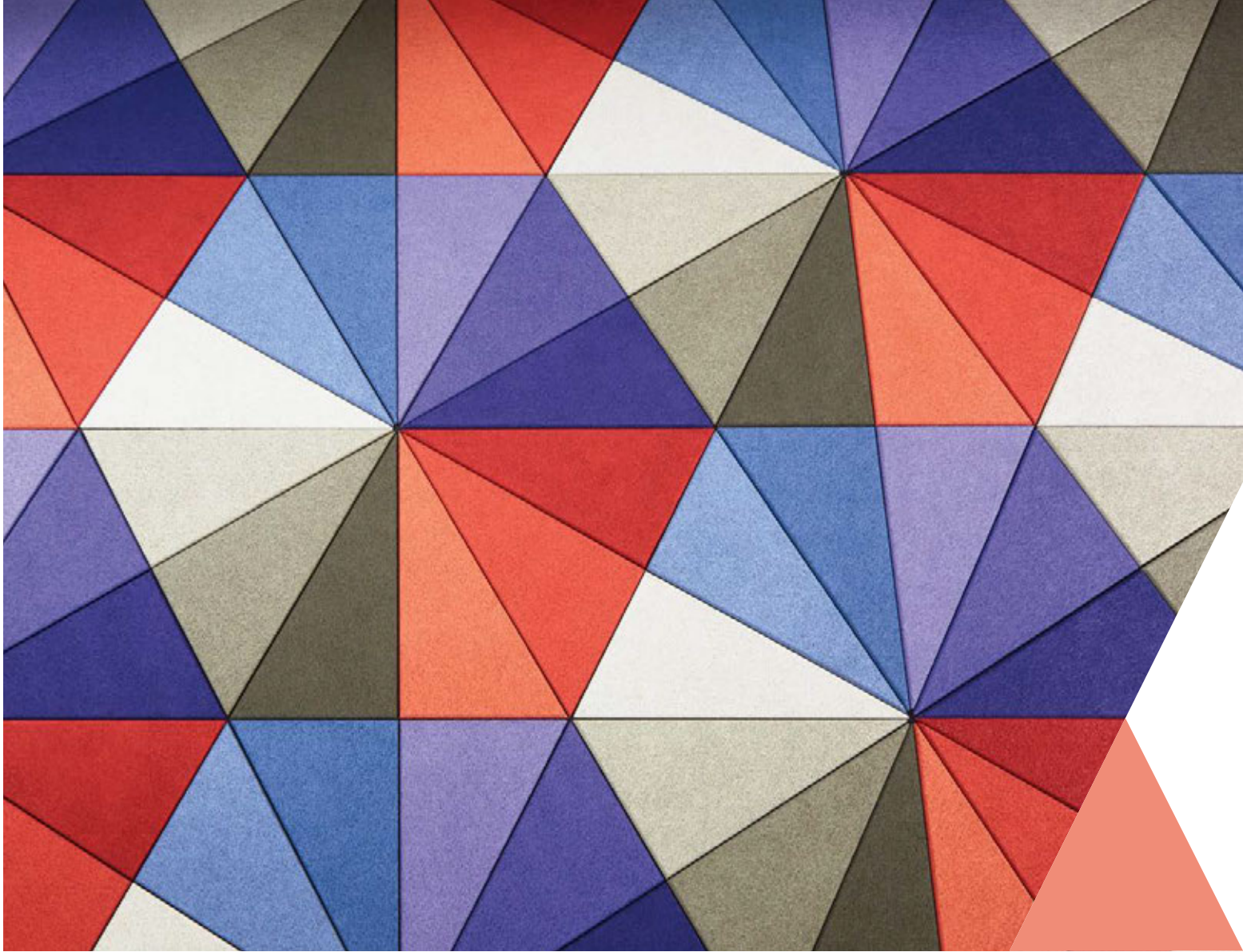
Fabric walls do double duty, providing both acoustics and a tackable surface for displays and bulletin boards.

- Abuse-resistant, fabric-wrapped panels attach directly to walls
- Excellent Noise Absorption – NRC up to 0.90
- Mounting is quick and easy using internal spline system
- Durable fabric options available



▼ Tectum® Fabric wall panels; Southland Christian Church, Lexington, KY





▲ Tectum® Panel Art ceiling and wall panels; Armstrong World Industries, Lancaster, PA

Panel Art FIT TO A "T"

Create your own custom shapes, or use one of eight prefabricated geometrics to help your ceiling and wall designs take shape.

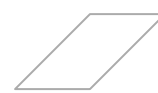
- Available in eight shapes, or create custom shapes from panels up to 48" x 48"
- Excellent sound absorption – NRC up to 1.0
- All panels have beveled edges on all four sides
- Can be mechanically fastened to a wide variety of surfaces
- Now, 1" panels in White and Natural are Living Product Challenge Certified by the International Living Future Institute
- White or Natural 1" thick panels are part of the Sustain® portfolio



7.5" Hexagon



8" x 16" Right Parallelogram



8" x 16" Left Parallelogram



8" x 16" Rectangle



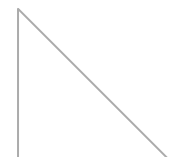
8" Square



8" Circle



8" Triangle



16" Triangle



Tectum® Direct-Attach Wall Panels;
Chula Vista Elementary School, San Diego, CA;
◀ Ruhнау Ruhнау Clarke, Riverside, CA



▲ Tectum Panel Art & Shapes Panels;
Boys & Girls Club, Lancaster, PA

TECTUM® MADE TO FIT

Tectum® ceiling and wall panels are available in a variety of sizes, shapes, forms, and colors. Select from a natural factory finish, white, or made-to-order colors. Panels can be field-painted up to six times without impacting acoustic or fire performance. Tectum panels are made to fit your design needs.

SIZES COLORS ACOUSTICS

TECTUM® PANELS

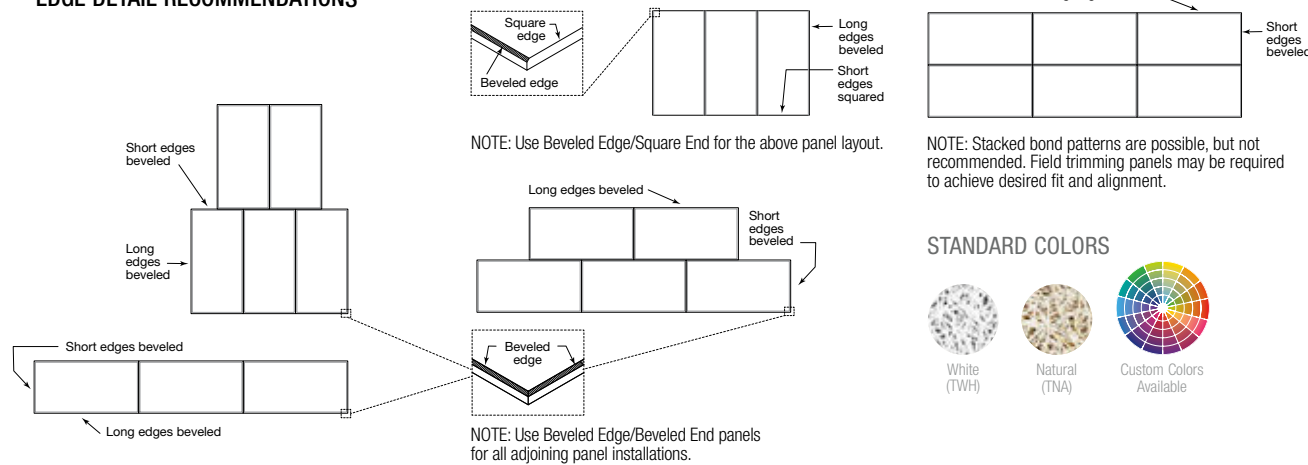
	Width	Length	Thickness
Blades™ & Baffles	23-3/4" – 47-3/4"	11-3/4" – 23-3/4"**	1", 1-1/2", 2"
Shapes & Clouds	23-3/4" – 47-3/4"	Up to 96"	1-1/2", 2"
Direct-Attach	23-3/4" – 47-3/4"	48" – 144"	1", 1-1/2", 2"
Finale™ High NRC	23-3/4" – 47-3/4"	48" – 144"	1", 1-1/2", 2"
Panel Art	47-3/4"	48" **	1", 1-1/2", 2"
Lay-in & Tegular	23-3/4" – 47-3/4"	23-3/4" – 47-3/4"	1", 1-1/2", 2"
Fabric Walls	23-3/4" – 47-3/4"	48" – 120"	1", 1-1/2", 2"

* Available height for Blades & Baffles. Length can extend beyond 4' with mounting channels.

** Larger custom sizes available upon request.

Product	Panel Thickness	Weight (Sq.Ft.)	Mounting				
			Suspended	A Mounting	D-20 Mounting	C-20 Mounting	C-40 Mounting
			NRC Rating				
			NRC	NRC	NRC	NRC	NRC
Blades & Baffles	1"	1.63 lbs/SF	0.40 (Sabins/Sq. Ft.)	-	-	-	-
	1-1/2"	2.53 lbs/SF	0.50 (Sabins/Sq. Ft.)	-	-	-	-
Shapes & Clouds	1-1/2"	2.55 lbs/SF	0.50 (Sabins/Sq. Ft.)	-	-	-	-
Lay-in & Tegular Ceiling Panels	1"	1.63 lbs/SF	0.40	-	-	-	-
	1" w/ 1713 Infill	-	0.90/CAC 33	-	-	-	-
	1-1/2"	2.53 lbs/SF	0.50	-	-	-	-
Fabric Walls	1"	1.63 lbs/SF	-	0.50	0.60	-	0.90
Direct-Attach Ceiling & Wall Panels	1"	1.63 lbs/SF	I-Beam: 3.8 (Sabins/ 2' x 4' x 1" Tectum panel) Truss: 2.9 (Sabins/ 2' x 4' x 1" Tectum panel)	0.40	0.45	0.80	0.85
Panel Art Ceiling & Wall Panels	1-1/2"	2.53 lbs/SF		0.55	0.60	0.90	0.95
	2"	3.30 lbs/SF		0.60	0.70	0.95	1.00
Finale™ Ceiling & Wall Panels	1" Panel with Integral Minwool Insert & 1" Furring	3.00 lbs/SF		0.85			
	1-1/2" Panel with Integral Minwool Insert & 1" Furring	3.50 lbs/SF		0.90			
	2" Panel with Integral Minwool Insert & 1" Furring	4.06 lbs/SF		0.95			

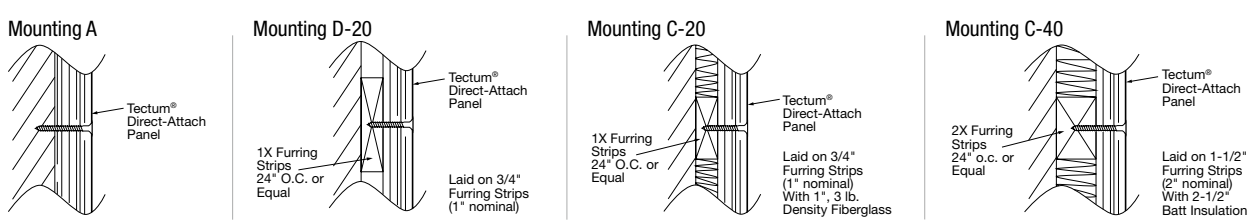
EDGE DETAIL RECOMMENDATIONS



STANDARD COLORS



ACOUSTICAL MOUNTING METHODS



TAKE THE NEXT STEP

1 877 276-7876

Customer Service Representatives
7:45 a.m. to 5:00 p.m. EST
Monday through Friday

TechLine – Technical information, detail drawings,
CAD design assistance, installation information,
other technical services – 8:00 a.m. to 5:30 p.m. EST,
Monday through Friday. FAX 1 800 572-8324
or email: techline@armstrongceilings.com

armstrongceilings.com/tectum

Latest product news
Standard and custom product information
Online catalog
CAD, Revit®, SketchUp® files
A Ceiling for Every Space® Visual Selection Tool
Product literature and samples – express service
or regular delivery
Contacts – reps, where to buy, who will install

YOU INSPIRE™ SOLUTIONS CENTER

1 800 988-2585
email: solutionscenter@armstrongceilings.com
armstrongceilings.com/youinspire

Design Assistance

Collaborative design
Detail drawings
Specifications
Planning and budgeting

Pre-construction Assistance

Layout drawings for standard
and premium products
Project installation recommendations
Contractor installation assistance

you inspire™
solutions center

helping to bring your one-of-a-kind ideas to life

FSC® is a registered trademark of FSC Forest Stewardship Council®, A.C., license code FSC-C007626
Inspiring Great Spaces® is a registered trademark of AFI Licensing LLC
LEED® is a registered trademark of the U.S. Green Building Council
Revit® is a trademark of Autodesk, Inc.; SketchUp® is a registered trademark of Trimble, Inc.
Declare® and Living Building Challenge® (LBC) are trademarks of the International Living Future Institute®
WELL Building Standard™ is a trademark of The International WELL Building Institute (IWBI)
UL and UL Certified are registered trademarks of UL LLC
All other trademarks used herein are the property of AWI Licensing LLC and/or its affiliates
© 2020 AWI Licensing LLC • Printed in the United States of America

armstrongceilings.com/tectum

Inspiring Great Spaces®

Armstrong®
CEILING & WALL SOLUTIONS