

NOTES:
 THE EXAMPLE LAYOUT AND CORRESPONDING BOM SHOWN ARE MEANT TO BE USED AS REFERENCE POINTS WHEN SPECIFYING A DESIGNFLEX SYSTEM.
 IF YOU PLAN TO USE THE EXACT LAYOUT SHOWN, OR ANY VARIATION THEREOF, CONSIDER THE FOLLOWING NOTES:

- 1) DRAWING DETAILS SHOW A CEILING PLAN VIEW WHICH IS FROM A PLENUM POSITION LOOKING DOWN ONTO THE BACKSIDE OF THE CEILING SYSTEM.
- 2) ALL MAIN BEAM SPLICE CONNECTIONS SHOULD BE STAGGERED ACROSS THE INSTALLATION WITH ALIGNED ROUTE HOLES.
- 3) SCREWS, RIVETS, AND OTHER GENERAL FASTENERS THAT ARE NOT INCLUDED IN BOM OR IN DETAILS BELOW, NEED TO BE SUPPLIED BY OTHERS. REFER TO INSTALLATION INSTRUCTIONS FOR DETAILS ON REQUIRED FASTENERS.
- 4) HANGER WIRE LOCATIONS SHOWN BELOW ARE ONLY SUGGESTIONS BASED ON EXAMPLE LAYOUT AND MATERIALS AND CAN BE MOVED AS LONG AS THEY ARE IN ACCORDANCE WITH ASTM C636 AND PRODUCT SPECIFIC INSTALLATION INSTRUCTIONS.
- 5) CONDITIONS SHOWN ARE FOR NON-SEISMIC INSTALLATIONS (SEISMIC DESIGN CATEGORY A, B) - REFERENCE INSTALLATION INSTRUCTIONS FOR CONSIDERATIONS AND REQUIREMENTS FOR SEISMIC INSTALLATIONS.
- 6) DETAILS BELOW AND BOM ARE SUBJECT TO CHANGE BASED ON PRODUCT SPECIFIC INSTALLATION INSTRUCTIONS AND CHANGES AT THE PERIMETER RELATED TO THE LAYOUT (LINEAR FEET OF PERIMETER, FULL SIZE VS. CUT PANELS, BORDER PANEL AND SUSPENSION INSTALLATION METHOD).
- 7) 7800 WALL ANGLE PERIMETER SHOWN BELOW. REFERENCE INSTALLATION INSTRUCTIONS FOR DETAILS ON ALTERNATIVE PERIMETER SOLUTIONS.
- 8) BOM DOES NOT ACCOUNT FOR THE USE OF SCRAP OR EXCESS MATERIAL CUT FROM OTHER ITEMS.

| SR-0002-2 BILL OF MATERIALS | | | | |
|-----------------------------|-----|--------------|--|--|
| ITEM | QTY | STOCK NUMBER | DESCRIPTION | |
| 1 | 16 | 7800 | Angle Molding | |
| 2 | 36 | 7500/7501 | 12' ID/HD Suprafine Main Beam | |
| 3 | 202 | XL7540 | 4' Suprafine Cross Tee | |
| 4 | 68 | XL7520 | 2' Suprafine Cross Tee | |
| 5 | 132 | 8357PB | LyraPB 9/16 Sq Tegular - 24 x 48 x 1" | |
| 6 | 148 | 8361PB | LyraPB 9/16 Sq Tegular - 24 x 24 x 1" | |
| 7 | 72 | STAC | Single Tee Adapter Clip | |
| 8 | 90 | 7891 | 12 Gauge Hanger Wire (Qty. = number of min. hanging point locations) | |

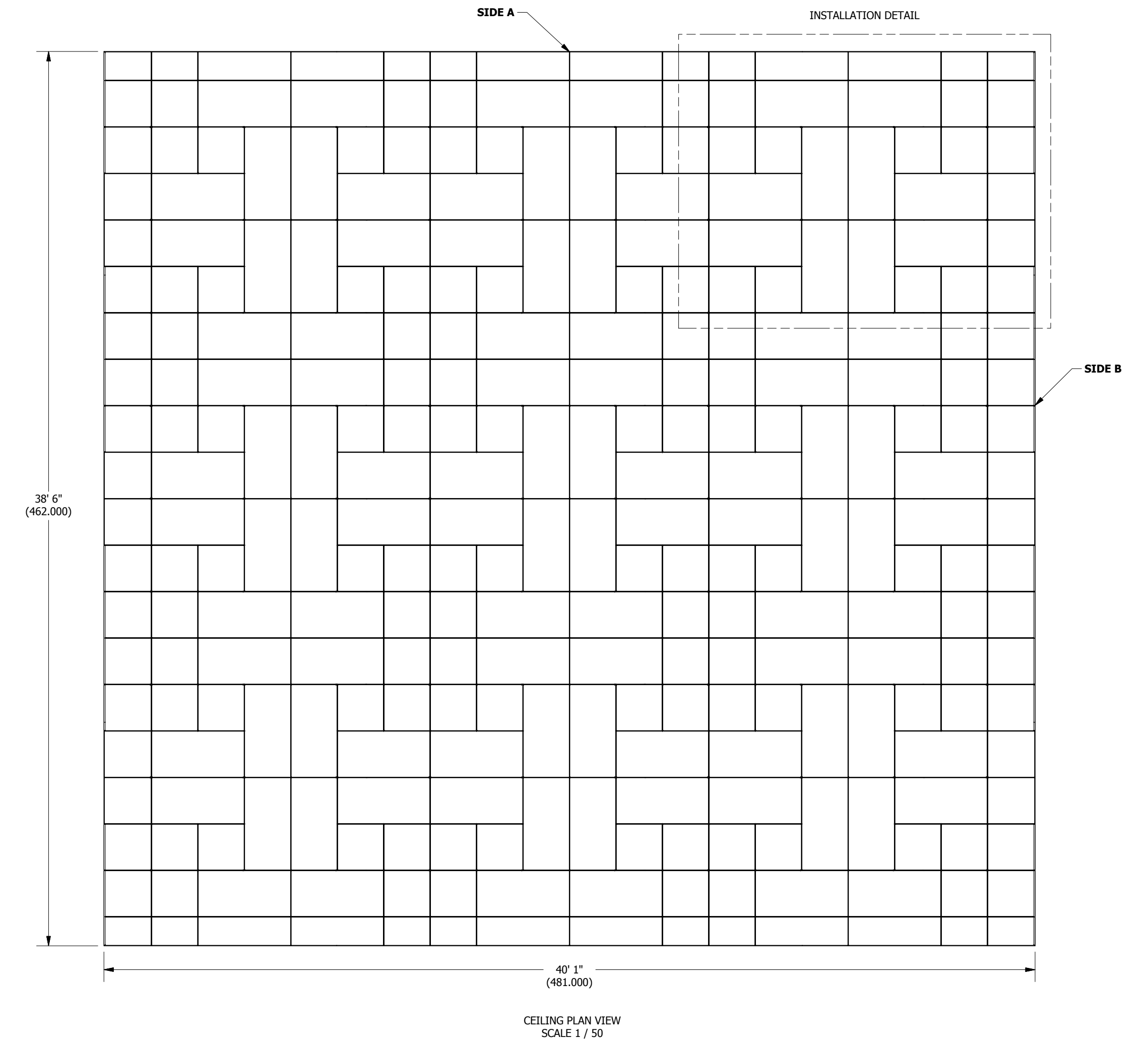
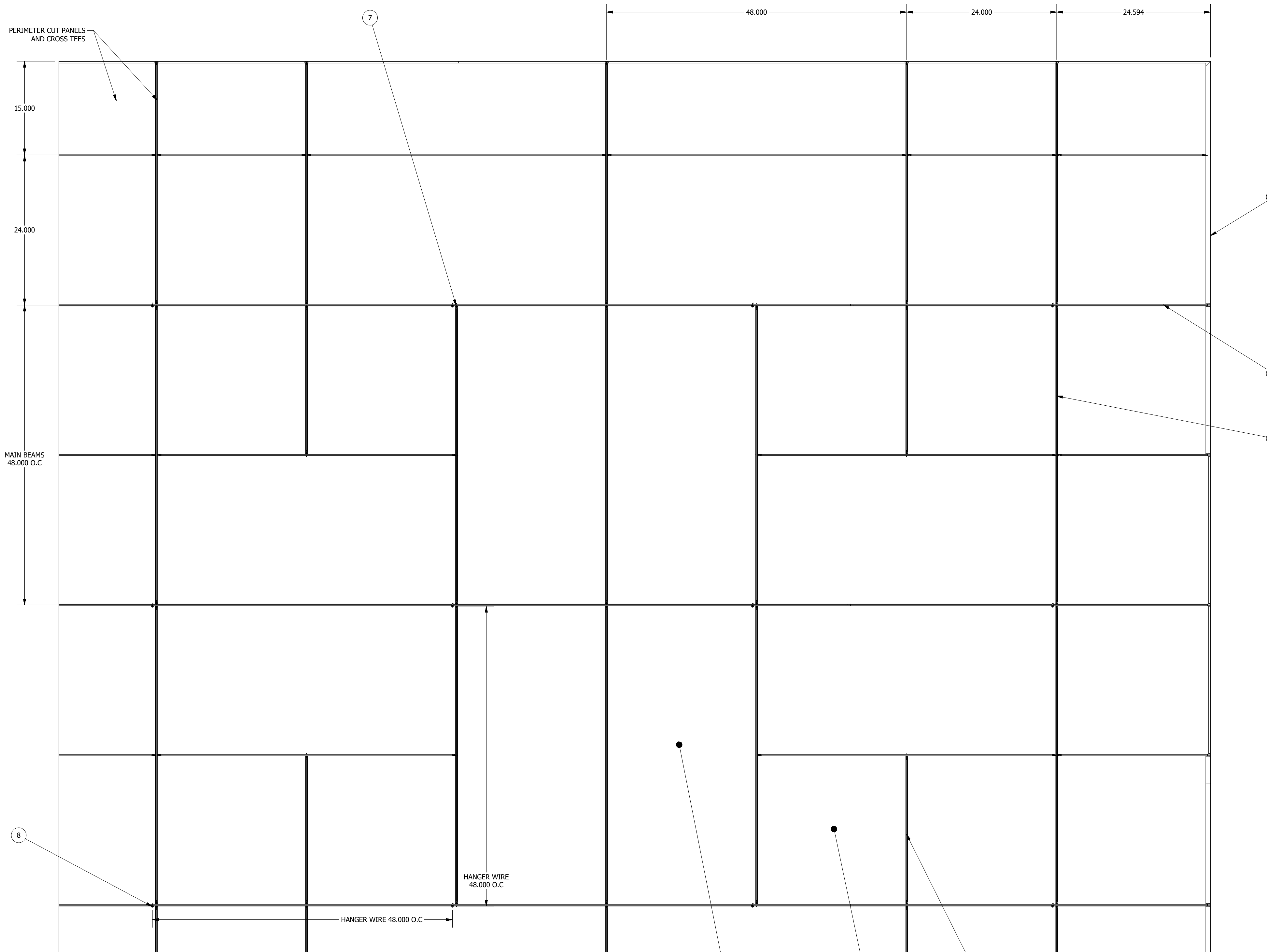
EXAMPLE LAYOUT AND BOM SHOWN WITH LYRA PANELS AND SUPRAFINE SUSPENSION SYSTEM. REFER TO PRODUCT SPECIFIC INSTALLATION INSTRUCTIONS FOR DETAILS ON ALL REQUIRED COMPONENTS.

PANEL PRODUCT FAMILIES COMPATIBLE WITH THIS LAYOUT:
 LYRA, CALLA, OPTIMA, ULTIMA, METALWORKS TEGULAR, WOODWORKS TEGULAR, AND WOODWORKS VECTOR

SUSPENSION SYSTEMS COMPATIBLE WITH THIS LAYOUT:
 SUPRAFINE ID/HD AND PRELUDE ID/HD

SIDE A - REPRESENTS A BORDER CONDITION UTILIZING FIELD CUT PANELS AND GRID
SIDE B - REPRESENTS A BORDER CONDITION UTILIZING FULL SIZE PANELS AND GRID

REFERENCE INSTALLATION INSTRUCTIONS FOR FURTHER DETAILS ON HOW THESE BORDER CONDITIONS ARE FINISHED



INSTALLATION DETAIL
SCALE 1 / 10



DESIGNFLEX SR-0002-2

DRAWN BY: NJF DATE: 10/2/2018 PD

These drawings show typical conditions which the Armstrong products depicted are installed. They are not a substitute for an architect's or engineer's plan and do not reflect the unique requirements of local building codes, laws, statutes, ordinances, rules and regulations (Legal Requirements) that may be applicable for a particular installation. Armstrong does not warrant, and assumes no liability for the accuracy or completeness of the drawings for a particular installation or their fitness for a particular purpose. The user is advised to consult with a duly licensed architect or engineer in the particular locale of the installation to assure compliance with all legal requirements. Armstrong is not licensed to provide professional architecture or engineering design services.